



Welt Cord



ULTRALEATHER®



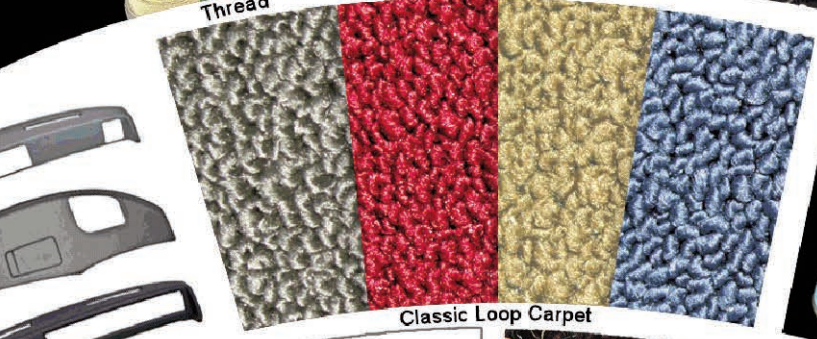
Thread



Ultraleather®



Upholstery Tools



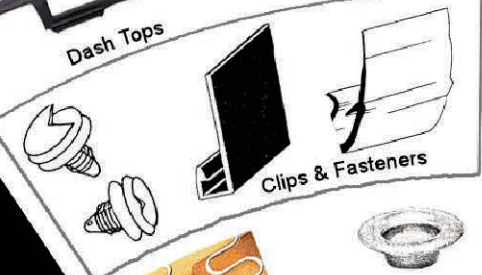
Classic Loop Carpet



Dash Tops



Adhesives & Cleaners



Clips & Fasteners



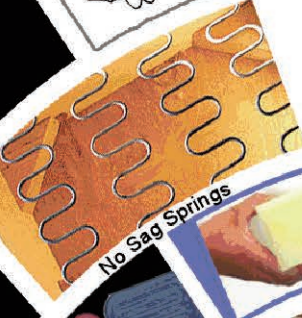
Decorative Nails



Boat Canvas



Vinyl Paint



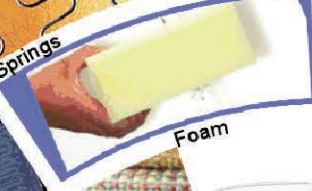
No Sag Springs



Grommets



Seat Belts



Foam



Vinyls



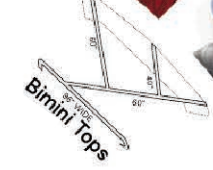
Shears



Heel Pads

Tweeds

Spring Twine



Bimini Tops



Snap Caps



Zipper



Hog Rings



Staple Guns

Upholstery Manuals



Larry Dennis Company

www.larrydennis.com



*Your Dependable
Automotive & Marine
Upholstery Supplier*

LARGEST INVENTORY IN THE SOUTHWEST

We also carry, but are not limited to the following:

- ORIGINAL BODY CLOTH & LEATHER
- ULTRALEATHER
- SYNTHETIC LEATHERS (VINYL)
- STREET ROD INTERIORS & TWEEDS
- AUTOMOTIVE & MARINE CARPETS & CANVAS
- MARINE VINYL & FITTINGS
- TOOLS & SUPPLIES
- DASHTOP PRODUCTS



Ultraleather



*Original Body Cloth & Leather
Automotive Fabrics*



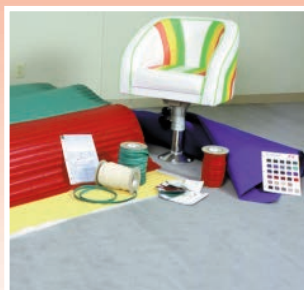
Street Rod Interiors



Automotive & Marine Carpet



DashTop Products



*Marine Vinyls, Hardware
& Fittings*



*Marine Canvas
and Carpet*



*Yacht, RV, Aircraft
& Institutional Interiors*



Foam, Tools & Supplies

LARRY DENNIS COMPANY
 6121 MIDWAY RD. • FORT WORTH, TEXAS 76117
 817-222-9700 • FAX 817-222-1457
 WWW.LARRYDENNIS.COM • EMAIL: LDCTX@ATT.NET

Products

ABS Panel Board	5
Adhesives	15
Body Cloth	9, 10
Buttons, Dies & Nails	16-17
Camouflage Fabrics & Vinyls	45
Canvas, Marine	37
Carpet, Automotive	6-7
Carpet, Marine	36
Cleaners & Protectants	4, 15
Convertible Top Accessories	12
Dashtop Products	14
Eisenglass (Auto)	12
Eisenglass (Marine)	44
Eisenglass Cleaner	10, 44
Fabrics, Automotive	9, 10
Fasteners, Automotive	26-33
Foam	34, 35
Grommets & Dies	31, 33
Hardware & Fittings (Marine)	42-44
Headliners (Automotive)	5
Heel Mats	6
Insulation / Heat Barrier	7
Leather (Automotive)	4
Needles	20, 22
Original OEM Fabrics	3
Perma-Mesh	24
Seat Belts & Webbing	7
Seat Clips	26-27
Seat Risers	13
Seating, Automotive/Street Rod	13
Street Rod/Automotive Interiors	4-11
Sun Visors	4
Thread & Bobbins	18
Trim Supplies (Automotive)	17-33
Trunklining	7
Velcro	34
Vinyls (Automotive)	10-11
Vinyls (Marine)	37 - 39
Vinyl Paint & Prep	15
Weather Striping	27
Windlace	4
Zippers	8, 12, 44

"Original" Automotive Fabrics



*We're your source for
cut yardage of "Original"
Detroit-Match Automotive
Fabrics (1989-2017 Models)*

GM – FORD – CHRYSLER – IMPORTS

**Larry Dennis Co. specializes
in original (1989-2017)
automotive fabrics.**

IN STOCK

(All orders ship by 5 pm Mon-Fri)

- **Original Leather**
Sold by Full Hide, 1/2 hide or square inch
- **Original Body Cloth**
1/2 yd. minimum cut
- **Original Vinyls**
1/2 yd. minimum cut
- **Headliners** (see page 5)
1/2 yd. minimum cut

If you are having a hard time matching the cloth, leather or vinyl in your 1989 or newer model cars, give us a call. Send us a sample so we can better identify with a Detroit number or a DeLeo number.

Our in-house professionals are ready to help find solutions for your next vehicle restoration project.

If you don't see it, we can probably get it!

CALL US AT (817) 222-9700



**Original Genuine Automotive
Leather for 1989 - 2018
GM, FORD, CHRYSLER, MERCEDES
and European Cars**

- Original Leather
- Original Vinyls to Match

MANY IN STOCK – CALL FOR PRICES

**Detroit-Match
Many Colors Available**

Samples Available

Sold by Full Hides, Half Hides or Cuts.

**LEXOL®
High Performance
Leather Care**

Help prevent leather seats from cracking by cleaning them with LEXOL® Leather Cleaner and feeding them with LEXOL® Leather Conditioner. Designed specifically for use on fine leather. 16.9 oz. spray bottle

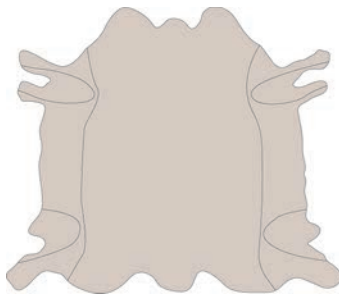


LEXOL-pH® Leather Cleaner
LEXOL Leather Conditioner

LEATHER

CONVERSION TABLE

18 sq. ft. =	1 yds
34 sq. ft. =	2 yds
51 sq. ft. =	3 yds
68 sq. ft. =	4 yds
85 sq. ft. =	5 yds
102 sq. ft. =	6 yds
119 sq. ft. =	7 yds
136 sq. ft. =	8 yds
153 sq. ft. =	9 yds
170 sq. ft. =	10 yds



**Call for Close Out & Surplus
Leather at Bargain Prices
(Full Hides Only)**

The average automotive hide is between 45-55 sq. ft. In computing the number of hides required to do a good sized job, the following rule of thumb can be applied: 1 yd. (54" wide) equals 18 sq. ft. Thus, the average hide is the same as 2 1/2 lineal yards.

The butt (widest area of the hide) has the tightest fiber and the best long term flexibility. This area should be used for cushion tops, which get the most usage.

The shoulder and belly of the hide can then be used on the outside back and arms (areas subject to considerably less stress).

When figuring a leather job, the estimate of trimmers cost is equivalent to approximately \$100 per lineal yard, plus labor (plus your mark-up).

Windlace (A)



Windlace is the cording that is used around the perimeter of the doors of automobiles. The material is sewn around 3/8" sponge cord with cardboard and has a flange of approximately 1/2".

How much Windlace do you need?
5 Yards for Most 2 Door Hardtops
7 Yards for Most 2 Door Sedans
14 Yards for Most 4 Door Vehicles

Sun Visor Boards (B)

One Size 18" x 44" (Cardboard)





**Call LDC
for color selection.**

IN STOCK

- 3/16" Thickness
- 1/8" Thickness
- 60" Widths
- 100% Polyester

Some Wider Widths Available
Limited Quantities

Sample Card Available
★ NO CHARGE ★

ALWAYS BARGAINS on Surplus Headliner Save \$\$.
(10 yd. cut minimum)
Call for availability



Suede Headliner

- 4 Colors
- 1/8" Thickness
- Foam Backing
- 60" Width
- 30 yard rolls
- 100% Polyester

ABS Panel Board

ABS is a high strength plastic commonly used to fabricate custom door panels. Unlike acrylic, ABS will not crack when cut or drilled with conventional shop tools. Mounts easily with epoxy glue designed for both wood and plastic.

- 4' x 8' (sold by the panel)
- Waterproof
- Available in Black only
- High Tensile and Impact Strength Plastic

(A) - 1/8" thick
(B) - 1/16" thick

Headliner Components

Snap-on Windlances

Unigrip Windlace

Windlace

Sponge Rod

(Available by the Yard or by the Roll)

C - Listing Tape, 1 1/4"	(available in rolls only)	(100 yds)
D - GM Cloth Windlace		(50 yds)
E - Antique Windlace		(50 yds)
F - Snap-on Windlace (reg)		(33 1/3 yds)
G - Snap-on Windlace (jumbo)		(26 2/3 yds)
H - Unigrip #500 Windlace		(20 yds)
I - GM Cloth Wire-on		(50 yds)
J - Antique Cloth Wire-on		(50 yds)
K - Sponge Rod, 1/2"		(50 yds)
L - Sponge Rod, 3/8"		(50 yds)

High Quality Automotive Replacement Carpets

IN STOCK

DORSETT

El Dorado Carpet - 800 Series - 80"

- 100% nylon cut pile
- OEM match colors
- Hardback or softback
- Tighter weave with less fuzzing

Colors available for the 70's, 80's, 90's, and 2000's:



Specify hardback or softback

Ask for
SAMPLE # 0077

Color	Item No.
Black	8010
Dk. Grey	8070
Brown	8100
Royal Blue	8120
Red	8150
Ocean Blue	8180
Med. Dk. Graphite	824
Maroon	8250

Color	Item No.
Titanium	8260
Navy Blue	8400
Biscuit	851
Metallic Silver	853
Caramel	854
Med. Dk. Flint	862
Dk. Taupe	866

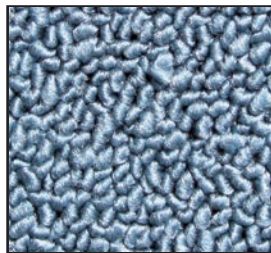
Color	Item No.
Med. Dk. Grey	8680
Charcoal	8970
Med. Opal	8019
Med. Grey	8075
Med. Quartz	8078
Lapis Blue	8170
Agate	8275

Color	Item No.
Med. Neutral	8335
Med. Mocha	8655
Prairie Tan	876
Dk. Slate	879
Med. Beige	8835
Dk. Graphite	8945

Raylon™ Carpet - 80/20 Loop Pile 80"

Color	Item No.
Black	501
Bright Blue	506
Turquoise	508
Saddle	511
Dk. Green	517
Med. Saddle	521
Lt. Blue	522
Maroon	525
Dk. Blue	540
Lt. Gunmetal	557
Deep Red	565
Fawn	571

- 100% Raylon, Latex Back Classic Retro Restoration Carpet

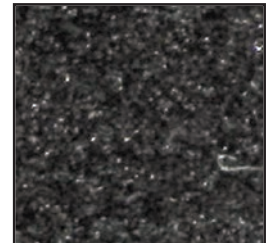


Ask for
SAMPLE # 09-70

Bently Carpet- 1200 Series - 72"

- Plush wool without the cost!
- 100% nylon cut pile
- Soft tone, low luster BCF yarn.

Color	Item No.
Black	1201
Graphite	1207
Mercedes Grey	1277



Ask for
SAMPLE # 210127-1

Essex Carpet - 1000 Series - 80"

- Heavy duty 100% nylon cut pile
- High luster
- Dense BCF yarn.

Color	Item No.
Black	1001
Med. Dk. Graphite	1024
Beige	1041
Prairie Tan	1076



Ask for
SAMPLE # 210127-1

Heel Mats / Pads



- (A) - Small - 6-1/4" x 13"
- (B) - Med. - 9-1/4" x 17-1/2"
- (C) - Large - 13" x 17-1/2"

Call for available colors.
Many to choose from!

Titan Carpet - 72" wide

Available Colors:

- Ascot Grey
- Sand

ScotchGuard Treated!



Made in the USA



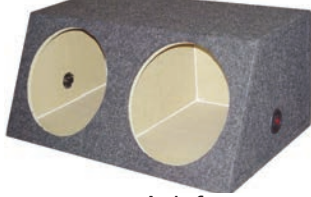
LARRY DENNIS COMPANY

Automotive Needlepunch Carpet

Superflex Carpet - 80" wide

- Heavyweight OEM Construction
- Dilour Pile (No Grin)
- Easy Installation
- UV Resistant
- 18 oz./Sq. Yd.
- Made in the **U.S.A.**

Color	Item No.
Black	2001
Dk. Gray	2007
M. Blue	2019
M. Saddle	2020
Dk. Blue	2040
Garnet	2060
Med. Gray	2068



Ask for
SAMPLE # 11-14

Flexform Carpet - 80" wide

- OEM Construction
- Dilour Pile (No Grin)
- UV Resistant
- 12 oz./Sq. Yd.

Color	Item No.
Black	1601
Red	1605
Dk. Gray	1607
M. Prairie Tan	1612
M. Graphite	1613
M. Neutral	1615
M. Blue	1619
M. Saddle	1620
Maroon	1625
Doeskin	1630
Cordovan	1635
Dk. Blue	1640
Med. Mocha	1645
Shadow	1648
Dark Charcoal	1650

Ask for **SAMPLE # 0093**

Color	Item No.
Silver	1651
Biscuit	1655
Ash	1657
Garnet	1660
Med. Gray	1668
Graphite	1670
Med. Opal	1675
Med. Dk. Oak	1676
M. Dk. Pewter	1677
Special Graphite	1678
Med. Camel	1680
Mist Gray	1681
Putty	1682

Automotive Trunklining – 54" wide

- OEM Quality & Colors.
- Made in the **U.S.A.**

Color	Item No.
Ford Dk. Heather	1880
GM Black	990
GM Charcoal	995
GM Lt. Heather	1040

Color	Item No.
TL Med. Neutral	915
TL Med. Gray	968
TL Med. Blue	919
TL Shadow	1017
TL Heather Charcoal	1023

Ask for **SAMPLE # 09-41**

Carpet Binding (vinyl)



1 1/4" one edge turning

Sold by the yard or by the roll (100 yards)

Call for available colors.
Many to choose from!

(A)

SEAT BELT WEBBING



Many Colors to choose from!
(Sold by the yard or by the roll)

Call for available colors (B)

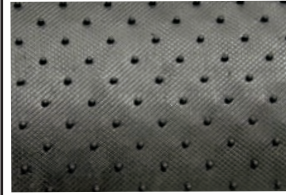
Pre-Made Lap Belts (C)



74" Size

Colors Available:
Black • Navy • Tan
Grey • Maroon (C)

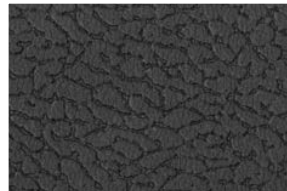
Nib Backing



Use for making custom mats to keep mats from sliding around in your car. Rubber backing for ease of gluing or sewing to carpet.

Sold by the yard or roll.

Rubber Lookalike Vinyl Matting (D)



Color: Black
76" width x 3/32" thick

Effective where heavy traffic would ruin normal carpet.

- More durable than rubber
- Provides safe traction
- Eye appealing

IN STOCK

Cuts by the yd. or 25 yd. roll (D)

JUTE PADDING



by the yard
or 25 yard roll

HIGH PERFORMANCE HEAT AND SOUND INSULATOR

- 100% synthetic carpet fiber for maximum stability.
- Will not stretch, dog ear, or feather.

Sizes Available:
27 oz. - 36" & 72" widths
40 oz - 36" only width



HIGH PERFORMANCE HEAT
AND SOUND INSULATOR

- 5/16" Thick Felt Pad
- 48" Wide
- Reinforced Foil on one side
- Reflects 90% of radiant heat from your passenger & engine compartments
- Will not mold, mildew, or create odors
- Use under hood, floorboard, marine engine hatch, marine hull, door panels/ firewalls.



CONCEALED ZIPPER

OEM FACTORY CONCEALED UPHOLSTERY ZIPPER USED IN
 FORD - CHEVY - DODGE - HONDA - ETC.



(A) Zipper
(B) Pull

AVAILABLE IN BLACK ONLY

Aluminum Zipper Chain and Sliders Make Your Own Zippers

(Used in Sofa Cushions)

	Size	100 yds.
(C)	#4 Chain	
(E)	#5 Chain	
(D)	#4 Slider	
(F)	#5 Slider	



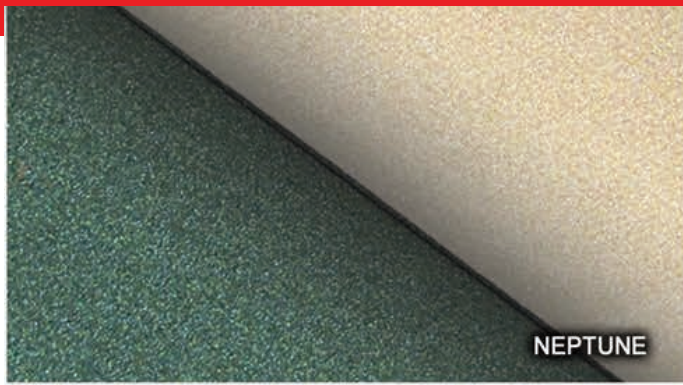
Call us for special requirements

Jeep Zippers - Ready Made

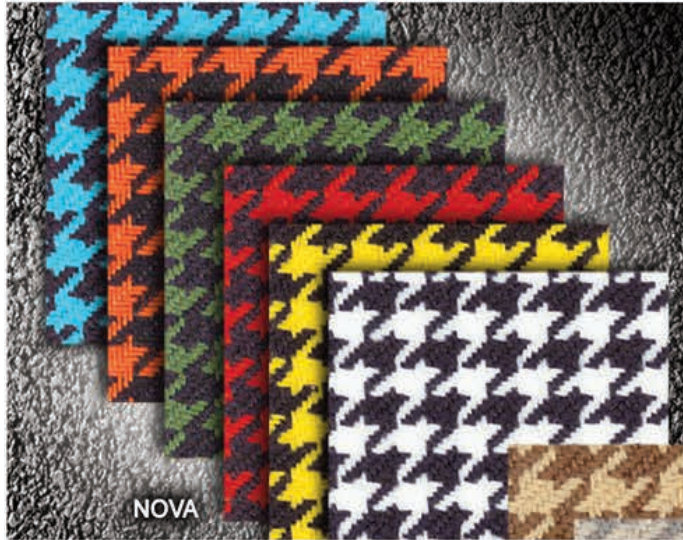
96" Black Nylon
 Jeep Zipper



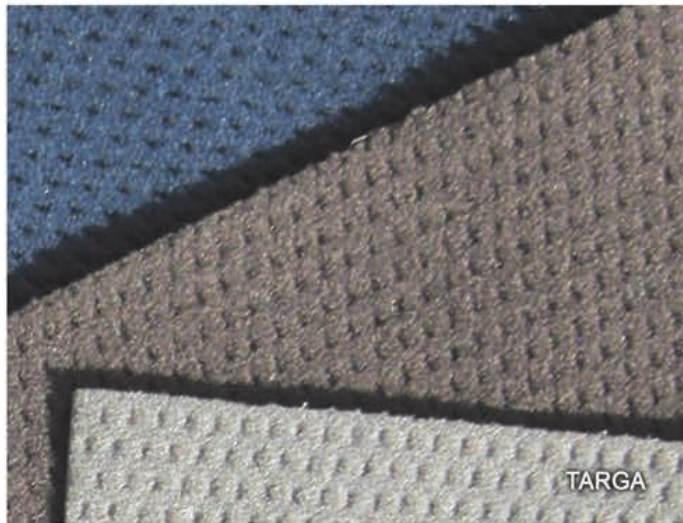
(G)



NEPTUNE



NOVA



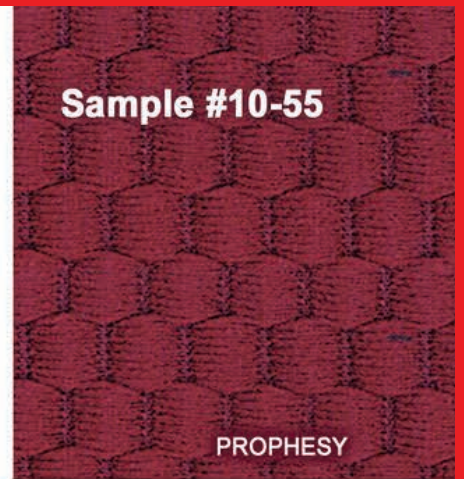
TARGA



XTREME INERTIA

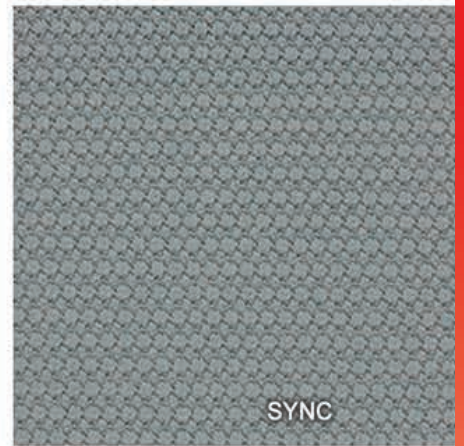


LDC AUTOMOTIVE fabric selection binder

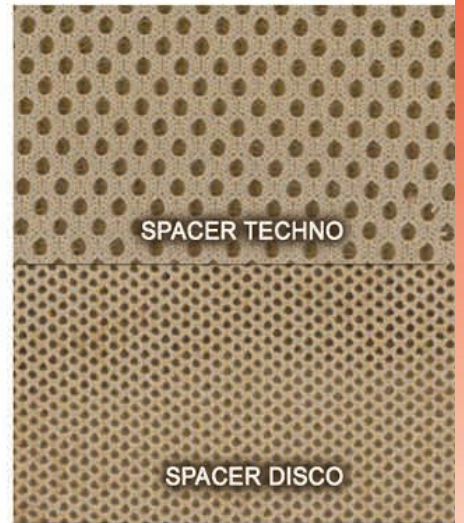


Sample #10-55

PROPESY



SYNC



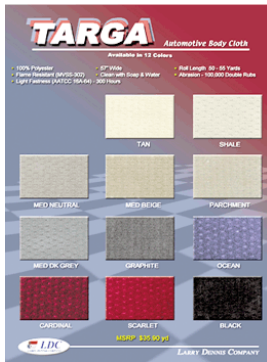
SPACER TECHNO

SPACER DISCO



SUEDE HEADLINER

BODY CLOTH



Sample #0039
sample card

'TARGA'

SPECIFICATIONS:

- 100% Polyester
- 57" Wide
- Roll Length
- Flame Resistant (MVSS-302)
- Lightfastness (AATCC 16A-64 300 hours)
- Abrasion - 100,000 Double Rubs
- Clean with Soap & Water

'SYNERGY SUEDE'

Automotive Faux Suede

Applications:

Contract Interiors, Automotive, RV & General Upholstery

2 Patterns:

Contour, Performer
12 Coordinating colors each

Sample #13613-1
sample ring



AUTOMOTIVE VINYL

'BoltaSoft' by Omnova



'Performance Upholstery for the Transportation Industry'

Patterns: Luxury, Luxury Mini Perf, Verona, Corinthian, Longitude, Montana, Sierra, Monticello, Heidi, Thunder Road, Empire, Overtheroad Milled Pebble, Sutton, Dynasty, G Grain, Nexus, Rogue, Oxen, Car Bra, Wallaby, Madrid, Carbon Fiber, Heritage

Sample #230516-2
fan deck

'Endurasoft 2' by Enduratex



'Softback to Enhance Workability'

Applications:

Matching Automotive OEM Colors: GM, Ford, Chrysler, Toyota, Honda, Nissan, Mercedes

Sample #190403-1
stack book

'Softside Automotive'



'Spradling' Automotive Vinyl Collection

Patterns: Apex, Aries, Buckskin, Caprice, Cenery, Carbon Fiber, Corinthian Soft, Gemini, G-Grain, Heidi Soft, Longitude, Madrid Soft, Montana Soft, Monticello Soft, Nuance, Orion, Oxen Soft, Pegasus, Polaris, Ruffino Soft, Sierra Soft, Soho, Sutton, Torino, Verona, Wallaby Soft.

Sample #160318-1
fan deck



'CLASSIC'

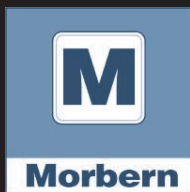
Applications:

Contract Interiors, Office, Restaurant, Hotel / Motel, RV, Automotive & Residential

Sample #180926-1
stack book

MANY MORE AUTOMOTIVE VINYL SAMPLES AVAILABLE!

Ask for our SAMPLES CATALOG!



LARRY DENNIS COMPANY

PALMA VINYL COLLECTION

Quality vinyl at an affordable price!



Sample #230621-1

Sample Ring

APPLICATIONS:

- Auto / RV markets
- Hospitality
- Office
- Marine Interior minimum

SPECIFICATIONS:

- Finished Width: 54 inches
- Roll Size: 40 yards
- Content: Vinyl
- Backing: 100% Polyester
- Weight: 32 oz per linear yard
- Abrasion resistance: 100,000 cycle #10 cotton duck
- UV Stabilized Pigments: 500 Hours minimum
- Cold Crack -20° F
- Flexing Endurance: 150,000 Cycles

FLAMMABILITY:

MVSS-302
CA TB 117 Section E
UFAC CLASS-1

FOR THE EXOTIC LOOK . . .

'BABY CROC'

available only at LDC



Other than the reptile itself, nothing looks more like a real crocodile than Baby Croc! With its reptile texture and its rich two-tone coloration, Baby Croc faux crocodile skin demands a double take. Baby Croc looks great when accented with real leather or microfiber.

- Surface composition: PVC
- Backing: 65% Poly, 35% Cotton
- 54" Wide. 30 yard rolls
- Abrasion: 35K cycles Wyzenbeek
- UV Stability: 40 Hours with no change in color

Sample #1536-1

sample ring

'NU-OSTRICH'

available only at LDC



Nu-Ostrich faux leather simulates the look of real ostrich skin with a textured feel. This faux ostrich skin is ideal for Automotive & RV seating, chair covers, totes, headboards, crafting and other upholstery type applications.

- Surface composition: PVC
- Backing: 65% Polyester, 35% Cotton
- 54" Wide. 30 yard rolls
- Abrasion: 35K cycles Wyzenbeek
- UV Stability: 40 Hours with no change in color

Sample #1536-1

sample ring

'NU-CROC'



Other than the animal itself, nothing looks more like a real crocodile than Nu-Croc. With its massive reptile texture and rich two-tone coloration, Nu-Croc faux crocodile leather demands a double take. Nu-Croc faux crocodile leather looks great when accented with real leather or microfiber to broaden its appeal and application. Even Crocodile Dundee would approve. And that's no crock.

Applications:
Residential

Sample #09-26

sample ring

'NU-QUILL'



This wildly popular pattern simulates the look of real ostrich skin. While not designed for seat cushions, it is perfectly suitable for inside and outside seat booth backs and headboards. Nu-Quill is environmentally friendly.

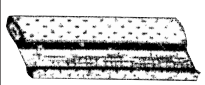

APPLICATIONS:

- Seat booth Backs (Indoor and outdoor)
- Residential
- Purses, Accenting

Sample #0136

sample ring

NEW

Convertible Top Wire-on		
	Vinyl Wire-on (25 yd. rolls) - Cuts 15 colors available	(A)
	Stayfast Cloth Wire-on (25 yd. rolls) Cuts or by the roll 10 colors available	(B)
	Wire-on Screws (use to install wire-on tips) 4" x 3/4" pkg./100	#AUV-3069

PLASTIC REAR WINDOW SHEETS (G)

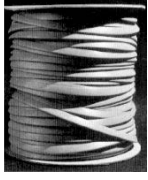
REGALITE®
AUTOMOTIVE EISENGLASS
Size 29" x 68" OEM,
40 gauge Sold by the sheet



Regalite uncoated press-polished sheets provide quality, optical clarity, and durability. Made from UV-resistant material. The thermoplastic, clear vinyl material and polished finish allow for flexibility and a soft hand. Regalite is the perfect solution if you seek a waterproof material that will last outdoors.

NEW

Convertible Top Bias Binding



(C) Top Line Drill (Vinyl)
OET 1-1/4", 35 Colors

(D) Stayfast Bias Binding (Cloth) One edge turned,
14 colors available
Cuts or by the Roll

See above 'Convertible Top Wire-on' for StayFast Wire-On

EISENGLASS CLEANING KIT (H)

Keep that clear vinyl clear! Specially formulated cleaning products that can be used safely on your clear vinyl are now available. We've come up with the best cleaning solution to keep scratches, clouding and chemical damage from occurring. Suntan lotions, fuel vapors, dirt and even rain can make your view distorted. Protect your clear vinyl today using the easy 1, 2, 3 steps.



Vinyl Tack Strips

FRONT
(E)



5/8" x 1/8"
(50 ft. per roll)

REAR
(F)



1/2" x 3/8" R Style
(50 ft. per roll)


Jeep Zippers - Ready Made (I)

96" Black Nylon Jeep Zipper




'TENAX' Fasteners


The 'TENAX' fastener is a self locking fastener which cannot come undone once engaged on its peg unless subjected to extreme force.




#11 Peg
(J)



#31-302
Button/Locking
Nut Combo
(L)



#15 Peg
(K)



#34 Key
(M)



Classic Seats

Buckets & Bench Seats

*Note: All other sizes available Special order only.
Allow 3 weeks for shipping.*



Split Back Bench

- 38"
- 40"
- 42"
- 44"
- 46"
- 48"
- 50"
- 52"
- 54"
- 56"
- 58"
- 60"



Straight Bench

- 38"
- 40"
- 42"
- 48"
- 50"
- 52"
- 54"
- 56"
- 58"
- 60"



Bucket Seats

- 18"
- 20"
- 22"
- 24"



Bucket Back Bench

- 38"
- 40"
- 42"
- 44"
- 46"
- 48"
- 50"
- 52"
- 54"
- 56"
- 58"
- 60"

CALL FOR PRICING



Seat Foam Side Wedges
Included with each
Bucket & Bench Seat

ALSO Sold Separately

Seat Track

(Included with each seat)



Seat Track
bolts directly
to seat base
(with forward and
backward movement)



LARRY DENNIS COMPANY

817.222.9700

DashTop™

- Colors Available
- Moulded Plastic Dash Covers
- Quick & Easy Installation

GM Cars & Trucks • Ford Cars & Trucks • Chrysler Cars & Trucks
Toyota Cars & Trucks • Imports Cars & Trucks

Most Popular Model
#DT-998 -
'98 Dodge Truck



**CALL LDC
FOR MODELS & PRICING**

SEM

COLOR COAT AEROSOLS

The Right Choice

**Professional Results
Every Time!**

High hiding, flexible coating to restore or change color of Dashtops, vinyl tops, interior vinyls, leathers, plastics - most interior parts ... even steel and aluminum.



41 Colors Available!
(sold by the can)

Item #	Color
SEM-15003	Phantom White
SEM-15013	Landau Black
SEM-15023	Cordovan Brown
SEM-15033	Saddle Tan
SEM-15043	Shadow Blue
SEM-15053	Granite
SEM-15063	Burgundy
SEM-15083	Silver
SEM-15093	Lt. Buckskin
SEM-15103	Super White
SEM-15113	Firethorn Red
SEM-15123	Santa Fe
SEM-15143	Sandstone
SEM-15163	Presidio
SEM-15173	Camel
SEM-15183	Warm Grey
SEM-15213	Bluemist
SEM-15223	Castella
SEM-15233	Gloss Black
SEM-15243	Satin Black
SEM-15253	Titanium Metallic
SEM-15273	Napa Red
SEM-15283	Pescadero Sand
SEM-15303	Graphite
SEM-15313	White
SEM-15323	Palomino
SEM-15353	Light Titanium

Item #	Color
SEM-15363	Portola Red
SEM-15373	Flame Red
SEM-15393	Medium Gray
SEM-15413	Thomas Bus Gray
SEM-15453	Gloss White
SEM-15483	Bluebird Brown
SEM-15603	Sailcloth White
SEM-15643	Pacific Blue
SEM-15713	Ladera
SEM-15723	Monterey
SEM-15753	Light Oak
SEM-15763	Storm Gray
SEM-15793	Shale
SEM-15803	Opel Gray
SEM-15813	Med. Dk. Pewter
SEM-15823	Lt. Parchment
SEM-15833	Khaki
SEM-15843	Med. Parchment
SEM-15853	Ivory
SEM-15863	Lt. Neutral
SEM-15873	Med. Slate Gray
SEM-15883	Med. Neutral
SEM-15893	Med. Prairie Tan

SEM

CLASSIC COAT AEROSOLS

The Right Choice

Changes or Renews Vinyl and Leather

- OEM matched colors
- Excellent for leather and vinyl
- Convenient aerosol package
- Superior adhesion and flexibility
- Multidirectional fan spray.



35 Colors Available!
(sold by the can)



Item #	Color	Item #	Color
SEM-17013	Ford Midnight Black	SEM-17213	GM Very Dk. Gray
SEM-17023	Ford Light Graphite	SEM-17223	GM Very Dk Pewter
SEM-17033	Ford Light Parchment	SEM-17243	Chrysler Taupe
SEM-17043	Ford Med. Graphite	SEM-17263	Honda Classic Gray
SEM-17053	Ford Med. Parchment	SEM-17293	Toyota Ivory
SEM-17063	Ford Med. Prairie Tan	SEM-17313	Acura Tan
SEM-17083	Ford Dk. Graphite	SEM-17353	BMW Silver Gray
SEM-17093	GM Black	SEM-17373	Dk Slate Grey
SEM-17103	GM Dk. Gray	SEM-17403	Camel
SEM-17113	GM Graphite	SEM-17413	Lt. Cashmere
SEM-17123	GM Lt. Gray	SEM-17423	Med. Cashmere
SEM-17133	GM Lt. Neutral	SEM-17503	Limo Flat Black
SEM-17143	GM Lt. Oak		
SEM-17163	GM Med. Dk. Pewter	SEM-13003	High Gloss Clear
SEM-17173	GM Med. Gray	SEM-13013	Satin Gloss Clear
SEM-17183	GM Med. Neutral	SEM-13023	Low Luster Clear
SEM-17203	GM Shale	SEM-39143	Trim Black
		SEM-39853	TEXTURE Coating

PREPARE YOUR SURFACES THE RIGHT WAY!

PLASTIC PREP

Removes contaminants and leaves plastic substrates clean and ready to coat.

#SEM-38353

Aerosol



VINYL PREP

Cleans soil, wax and grease from all vinyl surfaces. Prepares vinyl for excellent adhesion.

#SEM-38343 Aerosol



SAND-FREE

Works as bonding agent on interior plastics under COLOR COAT. Promotes adhesion. Ideal for hard to reach areas.

#SEM-38363 Aerosol



PREP SOAP

A mild abrasive (helps with adhesion) cleaner used as the first step in refinishing flexible substrates. Gravitates into surface and floats contaminants for easy removal. Foaming action removes body oils and other water soluble contaminants

#SEM-38363 16 oz. tube



IN STOCK

HH-66 Vinyl Cement

Bonds vinyl coated and laminated fabrics, plastics, metals, wood, leather.

- Use to seal instead of stitch or tack, fabricate and repair.

- Easy application – brushes smoothly, dries fast.

- Water proof, resistant to temperature and weather extremes, chemicals, oils, fuel and grease.



#HH-66-PT
Pint

#HH-66-QT
Quart

Weldwood Contact Adhesive

Spray Grade
Contact Adhesive for Professional Results

- Ready to Use, No Thinning
- Bond Strength Increases with Age
- Excellent Heat, Chemical and Water Resistance

For Bonding Landau Tops and Trim



1 Gal. or 5 Gal Can

Foam & Fabric Adhesive

K-GRIP 12 oz. spray can can be sold individual or by the case / 12



An aerosol spray adhesive especially formulated to bond foam to foam, as well as foam to fabric, wood, particle board, cardboard, metal, and fiberglass. Web spray pattern that offers low soak-in and instant tack. Forms flexible bonds.

#701

Trim & Laminating Adhesive

Camie

16.5 oz. spray can can be sold individual or by the case / 12

High strength, high temperature resistance, water resistant adhesive. Bonds to plastic, wood and metal. Fast tack, lace spray pattern.



#393

Foam & Fabric Adhesive

12.0 oz. spray can can be sold individual or by the case / 12

Bonds flexible urethane and latex foams to each other and to most other materials (wood, metal, paper, fabrics). Produces bond with foam-tearing strength and soft glue lines.



#581

Spray Trim Adhesive

12.0 oz. spray can can be sold individual or by the case / 12

Ideal for bonding headliner and other automotive trim applications on metal, wood, particle board and some plastic substrates. Has long open time and high strength bonding and heat resistance.



#1081

Specialty Adhesive Remover

12 oz. spray can can be sold individual or by the case / 12

Citrus Based remover is designed to remove reactive adhesive (including epoxies, urethanes and silicones) from a variety of substrates. Most adhesive will come off with a simple spray & wipe, while others may need to be scrubbed.



#609

- No Chlorinated Solvents
- Non-Corrosive

Aerosols That Speed Production...

in Automotive Trim, Marine Trim and Upholstering Industries

Dry Silicone Release Spray

11 oz. spray can can be sold individual or by the ca-se / 12

An exceptionally high quality dry silicone lubricant. Lubricates weather stripping, truck molding, window channels, doors, locks and seat mechanisms. Also ideal for machines, furniture and other equipment.



#781

Sprayway Glass Cleaner

19 oz. spray can can be sold individual or by the ca-se / 12

Excellent for cleaning windows, windshields, plastic glazing, chrome, stainless steel & enamel. Leaves no film.



#50

Pneumatic All Purpose Spray Gun

No mess,
easy
clean up.



Decorative Nails

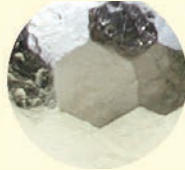
(Sold in 100 count and 1000 count)

For: Furniture • Valance • Sofa • Stools • Walls • Doors • Picture Frames

Decorative Nails & Nail Strips



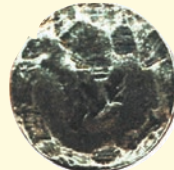
DN-10



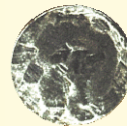
DN-11



DN-12



DN-20



DN-21



DN-22



DN-50



DN-210



DN-30



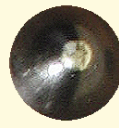
DN-31



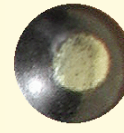
DN-60



DN-41



DN-180



DN-190



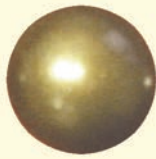
DN-120



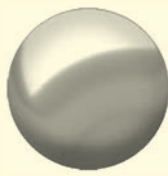
DN-131



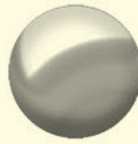
DN-140



DN-141



DN-150



DN-151



DN-152



DN-170



DN-61



DN-60

Matching Nail Strip Available



DN-80



DN-81



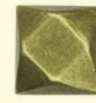
DN-90



DN-1091



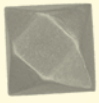
DN-92



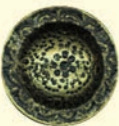
DN-111



DN-110



DN-112



DN-160



DN-71



DN-200



DN-101

#OSB-777

QUICK NAILER

FANCY NAIL SPACER FOR SPACING ANTIQUE NAILS
Set up To 5 nails head to head at one time without damaging the furniture, or your fingers. Exact spacing at the same time!

Load large end of tool making sure nails are perpendicular to and shanks are flush with the base of tool. Position tunneling section of tool over last nail driven and begin setting nail. Removal of tool may require twisting motion and/or pressure against nail heads with free hand. Use nylon tip hammer for best results.

Overall length 7" Width 3 1/2"

NAIL STRIP (continuous roll)

Nail Strip Trim eliminates individual nailing, speeds up upholstery operations and cuts cost by 50% to 80%. Absolute accurate spacing for uniform professional appearance.

- For use with No. 9 French Natural or Nickel Nails
- Continuous 50 yard roll

PLEASE NOTE: Decorative nails not included

Matches

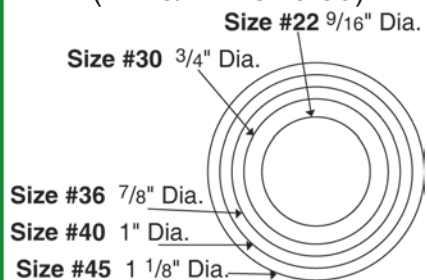
- #DN-170 - French Natural
- #DN-152 - Nickel



Button Size Chart

Dimensions are for buttons before covering.

The standard measurement for buttons is 40 lignes per inch.
(Ex: 3/4" = size 30)



UNASSEMBLED SNAP



#2706-30 1 Gr. Pk.

Button shell with nylon socket (to be used over DOT stud XX-10362 screwed into upholstered panels)

NO DENT NAILS

Size #30 1" 1 Gr. Pk.



BUTTON DRIVING TOOL



DOMED BUTTONS

Size # 40, White Nylon Molded
5 Gr. Pk.
1 Gr. Pk.



THREADED NAILS

(For use with spring washers)
Size #30 1" 1 Gr. Pk.



SPRING WASHER

(Use with nails above)
Size #10 5/16" x 7/8"
1" Gr. Pk.



(Use with Button Machine at Right)

2 PIECE BUTTON DIES & SHORT CUTTER SETS

Size #	HUX*
#22	#40
#30	#45
#36	

*HUX - for heavy-duty material

SHORT CUTTERS ONLY

Size	Size
#22	#40
#30	#45
#36	

#1920 Hand Press Button Machine

IN STOCK

Cuts fabric and covers buttons. Uses 2 piece dies and short cutters. Bolts to table for added stability. 22" high.



GROMMET DIES

(Use with Machine Above)

Size #00 & 0 and #1

ALL ITEMS ON THIS PAGE IN STOCK!
OTHER SIZES AVAILABLE ON SPECIAL ORDER.



PLASTIC SUPER HOOK WITH SOFT SHELL

Size #30 5 Gr. Box



1 1/2" PRONGS

Size	1 Gr. Pack	5 Gr. Pack
#22		
#30		
#36		



#9 WIRE EYE BUTTONS

Size	5 Gr. Pack
#22	#40
#30	#45
#36	

(Includes backs and black oxide shells.)

PRONG WASHERS

Size #3 Washer
1-3/8" Metal

1 Gr. Pk.



QTC "CONTRAST"

QTC "Contrast" is perfect for decorative seat trimming, accent stitching and much more. This thread will create a bold effect in any seam that is

Guaranteed to get noticed!

- BONDED NYLON THREAD**
- 18 impactful colors to choose from
- Applications - Automotive & Furniture Upholstery (Not recommend for outdoor use)

LARGE
Size
T-270
(8 oz. spools)



SAMPLE CARD available

"HIGH-SPEC" BONDED NYLON THREAD Size No. B69 Government Size E 6,000 yds./lb.

- QS-9000: Q-I Rated
- Meets all specifications for automotive, furniture and transportation
- Over 30 colors available
- Bonded & Lubed
- Left Twist
- Colorfast
- Automotive OEM vinyl color matches available

MADE IN USA

SAMPLE CARD available



NYLON SPOOLS
white & colors
4 oz. spools
8 oz. spools
16 oz. spools



PREWOUND BOBBINS
white colors
Style G 1/2 Gross
Style M 1/2 Gross



Matches Sunbrella® Acrylic Fabrics

IN STOCK

SAMPLE CARD available

UVR BONDED POLYESTER THREAD

(Recommended for Outdoor use)

- Ultraviolet Resistant
- Mildew Resistant
- Colorfast Dyes
- Over 30 colors available
- Marine Acrylic and Auto OEM vinyl color matches available

Size B138 (12) - Also available in 16 colors

Size B92 (16) Government Size F 4,600 yds./lb.

POLYESTER SPOOLS
white & colors
4 oz. spools
8 oz. spools
16 oz. spools

PREWOUND BOBBINS
white & colors
Style G 1/2 Gross
Style M 1/2 Gross



(A) BUTTON TUFTING TWINE (NYLON)
8 oz. Spool 295 yds.
IN STOCK



(B) SPRING TWINE (JUTE)
1lb. Ball
IN STOCK

Our trained staff will help you find the product you need-Just Call Us!



LARRY DENNIS COMPANY

IN STOCK

SPRADLING
Originals

WELT CORD FILLER

by the roll or case (4 rolls)

Description	Size
A - Poly Flex Welt	4/32" x 500 yds.
B - Poly Flex Welt	5/32" x 500 yds.
C - Poly Flex Welt	6/32" x 500 yds.
D - Fibre Flex	4/32" x 500 yds.
E - Fibre Flex	5/32" x 500 yds.
F - Fibre Flex	6/32" x 500 yds.
G - Fibre Flex	8/32" x 500 yds.
H - Dbl Fibre Flex Welt	5/32" x 250 yds.
I - Vinyl Double Welt	5/32" x 100 yds.



VINYL WELT CORD

by the roll or case (4 rolls)

Description
180-09 - Black Welt



(J)

180-24 - White Welt

EDGE WIRE (P)
5 ft. Stick



(Q)
RAZOR BLADES
Single Edge

Call for Quantity
Case Pricing



100 ct.

FLEX GRIP (R)
100 ft. roll



UPHOLSTERY WEBBING (S)

3 1/2" Jute (Burlap) Webbing

(Roll /72 yds.)



UPHOLSTERY FINISHING FABRICS

- Burlap
- Decking
- Dust Cover



Desc.	Width	100 yd. Rolls
(T) Burlap	40"	
(U) *Accord Black (Dust Cover)	36"	
(V) Beige Duon, Synthetic Decking Cloth	36"	
(W) Deck Cloth, Denim	30"	

*Used under chairs and sofas.

IN STOCK

VENTILATORS

A must for vinyl and leather cushions. Allows air to escape when cushion is compressed.

- #V1- 3/4" Ventilator
- #621- 3/4" Hand Ventilator Setter
- #V1- 1" Ventilator
- #621- 1" Hand Ventilator Setter



V1-3/4"

V1-1"

VENTILATOR PUNCH

#OSB-622

Hardened with tempered steel.
High quality.



Used to punch ventilator holes illustrated in pattern.

ELASTIC

Available in Black or White

Size

K - 1/2"

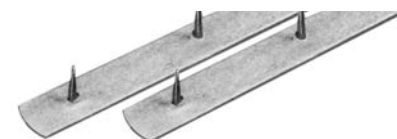
L - 3/4"

M - 1"

(50 yard rolls)



TACK STRIPS



- N - 30" Metal Tack Strip (sold ea. or by the case/100)
- O - 1/2" Cardboard Tack Strip (Sold by the roll - 495 ft)

#OSB-404



SPRING END FORMER

Crimps the end of zig-zag springs and open end coil springs.

13" Length 1/2" Width

A tough tool that makes work easy. Comes with three bolts and nuts. Bolt to corner of bench or on a 1 inch block no more than 5 inches from edge of bench. Can be used in a vise. Drill 5/16" holes 1-3/4" apart.



#OSB-4452

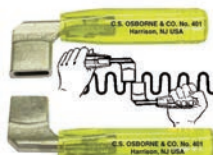
LINED BW CLIP

Used to attach zig-zag springs, edge springs and torsion springs to border and edge wires.

SPRING BENDER

#OSB-401

Both simple in application & efficient in use. Nickel plated ends are slotted to fit loops which can be bent with slight pressure or to unbend previously made bends. Precisely manufactured so that arcs, angles or curves can be properly made. Available in two sizes.



Opening of Slot (inches)	Width (inches)	Weight pair lbs.	UPC No.
1	3/8 X 1	1	14312
2	3/8 X 2	2-1/4	14314



(X) **NO-SAG SPRINGS**
#9

sold by the roll

EK SPRING CLIPS

For No Sag Springs

100 clips

Call for case pricing



#OSB-4450-3 SPRING CLIPS

3-Prong

250 clips

Call for case pricing



(Y) **UPHOLSTERY COTTON - Med. Grade**

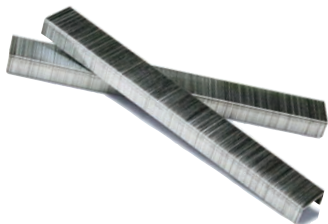
(Sold by the Roll)



BONDED DACRON -

27" Wide (Cushion Wrap) 13 lb. Roll (35 yds)

54" Wide (Cushion Wrap) 24 lb. Roll (35 yds)



ECONOMY STAPLES
For Duo Fast Staplers

Part No.	Size	Qty. Per Box
3108	1/4"	10,000
3112	3/8"	10,000
3116	1/2"	10,000
3308	1/4"	10,000
3312	3/8"	10,000
3316	1/2"	10,000
3318	9/16"	13,300
3412	3/8"	5,000
3416	1/2"	5,000
508	1/4"	5,000
5010	5/16"	5,000
5012	3/8"	5,000
5012SS*	3/8"	5,000
5016	1/2"	5,000
5016SS*	1/2"	5,000
5018	9/16"	5,000
5412	3/8"	5,000
5416	1/2"	5,000
5418	9/16"	5,000

*Stainless Steel

Made in USA



SAVE \$\$\$ WITH

EMPIRE STAPLES

IN STOCK

#7 Series

- Most Versatile and Interchangeable
- Fit: Rainco #7 Atro 72
- Fasco #7 Bea 71
- Senco S3G Bostitch #7
- Prebena V Spotnail 5318
- Prebena VW DP6310

*Call Us For
Quantity
Pricing*

EMPIRE STAPLES (10,000 PER BOX)

Part No.	Size
E704	5/32"
E706	1/4"
E708	5/16"
E710	3/8"
E711	7/16"
E712	1/2"
E714	9/16"

STAINLESS STEEL STAPLES

Part No.	Size
E706SS	1/4"
E710SS	3/8"
E712SS	1/2"

Call Us For Quantity Pricing

Pneumatic Staple Gun (A)



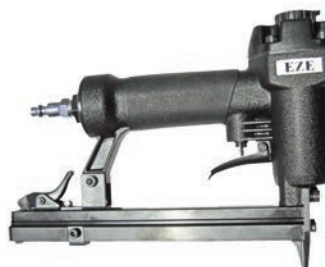
USES EMPIRE STAPLES

Applications:

- Furniture
- Upholstering
- TV and Stereo Grille Cloth
- Decoration
- Automotive Trim
- 5/8" Stapler
- 1" Nose Extension



EZE TC-08 Air Stapler (B)



Extended nose to reach into tight spaces.

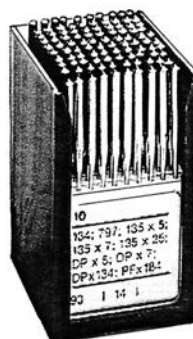
Staples: 3/8" crown

MERIT PRO Long Nose Pneumatic Tacker (C)

#7116LN



Light die cast aluminum body reduces work fatigue. Rubber wrapped handle. Longer nose & power driving. Suitable for applications in upholstery, cabinet assembly, & furniture manufacturing. **Takes staple type 71 in lengths 1/4" to 5/8"**



SEWING MACHINE NEEDLES (D)

IN STOCK

Available in Stock for Popular Model Machines

(see chart below for correct needle size)

Size	Machine Needles
16x63	Stocked in Gauges 21-22-23-24
16x87	Stocked in Gauges 16-18-20-21-22-23-24
16x99	Stocked in Gauges 21-22
135x17	Stocked in Gauges 18-19-20-21-22-23-24
190R	Stocked in Size 110-120-125-130-140-150-160-170-180
190LR	Stocked in Size 140-150-160
16x257	Stocked in Size 18-20-21-22

MACHINE NEEDLE SIZE CHART

Brand	Machine Model #	Needle Size	Brand	Machine Model #	Needle Size
SINGER	16-188	16x63	CONSEW	17 & 18	16x63
	31-15	16x87		30	16x87
	78-1&3	16x99		225 & 226	135x17
	110W & 111W	135-17		229 & 255	135x17
PFAFF	545	190R or 190LR	JUKI	255R & 118	135x17
				562 & 563	135x17



IN STOCK



OSB-445-3

SPRING CLIP PLIERS AND 3-PRONG CLIPS

A great time saver designed specifically for setting three prong spring or edge wire clips. Sets Kay or Baker clips. Nickel plated.



OSB-4450-3

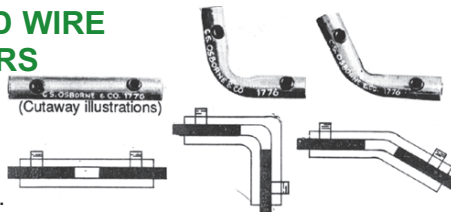
High quality three prong clips Box/250

SPRING AND WIRE CONNECTORS

Allen hollow head set screws in heavy tubing for maximum grip.

Set includes 8 straight connectors, one 90° connector and one 45° connector and Allen key.

#OSB-1776 SET

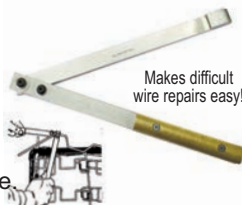


Fix broken seat springs and edge wires in minutes!

#OSB-1963

WIRE FORMER

Use to build your own springs for replacement or repair work on older vehicles. Ideal for making offsets when you need them. Can be mounted in vise.



Makes difficult wire repairs easy!

ALUMINUM STRAIGHT EDGE RULERS

Finest measuring rule on the market. Accurate markings one side only. Heavy 1/8" thick x 2" wide x 60" long.

#OSB-60SE



One edge for standard measurements, one edge for metric. Sturdy and wide. Silver with black etched scale markings on one side only. Heavy 1/8" thick x 1-1/2" wide x 36" long.

#OSB-802



TACK AND STAPLE REMOVER

This staple and tack remover can also be used for grooving out drawers, so that when reglued they will stick. Made of forged steel with wooden handle.



#OSB-121



#OSB-267

SEAM STRETCHER

Use to hold cushion fabric in place when handsewing final seam. Helps complete job neatly.



#OSB-412

PIPING TINS

Easily bent and adjusted to hold sides of cushion open when stuffing with foam. 4" x 36" long *sold by the Pair*

STAPLE REMOVER

Removes staples quickly and easily.

Forged from 4140 alloy tempered steel and carefully hardened for lasting use.



#OSB-124

STAPLE LIFTER

#OSB-120-1/2



The correct angle for removing staples of any size, from the smallest to the long leg staples and shredded material. Manufactured from top grade steel. Electronically hardened working ends are oven tempered to avoid breakage. Multisized handle to keep from rolling, made of easy to grip amber plastic.

CLAW TOOL

Narrow at the point to get under heads of ornamental nails and tacks without harming fabric or wood. A popular upholsterer's tool.

(blade length 3-1/4")



#OSB-200

CLAW TOOL

This claw is especially designed for lifting tacks and small nails. Drop forged steel blade with hardwood handle.



#OSB-122

(blade length 2-7/8")

Upholstery Needle Kits

Osborne needle kits give you a 4 needle size assortment
 – A must for upholstery!



#K-7 NEEDLE KIT
 Curved Round Point
 Extra Light
 Contains one needle each:

SIZE	2-1/2"	Gauge 20
	3"	Gauge 19
	3-1/2"	Gauge 18
	4"	Gauge 18



#K-4 NEEDLE KIT
 Curved 3-Square Point
 Contains one needle each:

SIZE	3"	Gauge 18
	4"	Gauge 17
	5"	Gauge 16
	6"	Gauge 15



#K-3 NEEDLE KIT
 Curved Round Point
 Contains one needle each:

SIZE	3"	Gauge 18
	4"	Gauge 17
	5"	Gauge 16
	6"	Gauge 15



#K-1 NEEDLE KIT
 Each kit contains:

- 2 Curved Upholstery Needles
- 1 Special Bent Needle for Sewing with String
- 1 Awning or Canvas Needle
- 1 Carpet/Heavy Material Needle

IN STOCK

UPHOLSTERY PINS
 #190 – 3" Length
 Nickel Plated
 Sold in 1 gross box

TACK HAMMER
 5 1/2" solid bright bronze head, steel tipped one end for magnet, other for hammering.
 #OSB-33

UPHOLSTERY TACKS
 Sizes 3, 6, 12
 1 lb. Box **#OSB-689**

#199 STEEL TWIST PINS
 Box/100
 or 10 Count



TIMESAVER TUFTING NEEDLE

Best in the trade. Does not catch when withdrawn. Saves time and labor. Use with clasp #418.

CLASP #OSB-418
 Box/500



TUFTING NEEDLE
 (For Button Replacement)
 Economical Furniture Button Tufting Needle (Use with #614 Clasp)
#OSB-613 - 12" #OSB-614 Clasp Gross

" T " HANDLE TUFTING TOOL



High quality tufting tool. Made of hardened steel with rubberized handle. Used for pulling loops through or up.
#OSB-408



#K-5 NEEDLE KIT

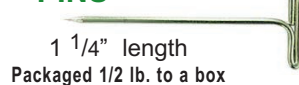
Single Round Point
 Contains one each:

SIZE	6"	Gauge 14	10"	Gauge 13
	8"	Gauge 14	12"	Gauge 13

REGULATOR With Plastic Handle #OSB-520



" T " PINS #OSB-189-20



1 1/4" length
 Packaged 1/2 lb. to a box

NAIL-ON FURNITURE GLIDERS



#OSB-678

#OSB-679BR



#OSB-679WH



IN STOCK

You can do a more professional job with the right tools!

Professional Trim Tools



#OSB-33

TACK HAMMER

5 1/2" solid bright bronze head, steel tipped on end for magnet, other for hammering.



Finest on the market!

#OSB-396

WHITE RUBBER MALLET

Extra heavy white rubber mallet will not mar surface. Limited bounce, superior quality. Size #3, 2 1/2" face dia., 4 1/2" head length, 11" handle length. Wt. 28 oz.



Recommended to Avoid Scarring

#OSB-196

RAWHIDE MALLET

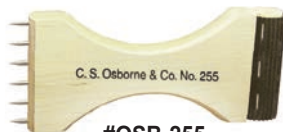
Rolled rawhide head ideal for jobs where scarring is a concern. Size #3, 1 3/4" face dia., 3 3/8" head length, 10" white hickory handle. Lightweight, weighs only 9 oz.



#OSB-253

GOOSENECK WEBBING STRETCHER

Popular choice hand stretcher catches webbing close to frame with plenty of leverage. Equally efficient for right or left hand use. Extra sturdy construction.



#OSB-255

WEBBING STRETCHER

Six steel teeth stretch webbing efficiently. Made of hardwood maple with corrugated rubber at other end. 3 3/8" W x 7 1/2" L.



#OSB-250

WEBBING, CANVAS OR LEATHER PLIER

Excellent tool for stretching canvas, leather and webbing. Made with hammer jaw which acts as lever when strong pull is required. 3 1/2" jaw width, 8 3/4" long.



#OSB-747

TUCKING TOOL

Rigid tool for tucking headlining and upholstery around windows, doors and other hard to reach areas. Finished edges, rounded corners, comfortable wood handle with eyelet hole.



#OSB-1020

AUTO TRIMMERS' AND UPHOLSTERERS' COMBINATION KNIFE

Professional tool designed for ripping seams. Cuts auto carpeting, vinyl, plastic and rubber. Beechwood handle contoured to fit hand.

WEBBING HOOK

Hook for pulling No. 239 Clips on Elastic and rubber webbing. 6 3/8" L, 2" W, wt. 7 oz



#OSB-264



#OSB-18

ALL PURPOSE AWL

For those hard to reach places. Multi-purpose tool assists in installation of roof windows, windshield rubber and back glass. Ideal for removing body clips, moldings, springs, cotter pins, radiator hoses, staples. Tempered end.



#OSB-4

HEAVY DUTY SCRATCH AWLS

Best quality steel blades with rugged plastic handle.

Size #1 (2 1/2" blade)

Size #2 (3 1/2" blade)

Size #3 (4 1/2" blade)



#EZE TG-07

FOAM CUTTER (A)

- Cuts foam up to 7-1/2" in thickness
- Light-weight for easy handling
- Cuts sharp turns with ease
- Removable foot
- Beats the competition in price & value

Replacement Blades \$17.90 ea. (B)



#OSB-1012

ZIPPER STOP PLIERS

Made of high quality forged steel. Vinyl handles for easy gripping. Spring loaded. Designed to install any kind of top stops on zipper chain.

Unique jaw design.



#OSB-91

DIAGONAL CUTTERS

These rugged forged nippers are ideal for cutting hog rings and wire. Polished head, finest industrial quality. Red vinyl grips to add comfort.



TI-94

END CUTTERS (C)

- Double-dipped sponge-type handle
- Built-in closing spring on all 3 models
- Made of #55 High-carbon steel

DIAGONAL CUTTERS (D)

- Ideal for cutting Hog Rings
- Double-dipped sponge-type handle
- Made of #55 High-carbon steel



TI-337



KAI Scissors

Stainless Steel Tailoring Shears for Professional Use

Suitable for Upholstery Work

- High-Carbon Molybdenum Vanadium Stainless Steel Blades
- Ergonomically Styled & padded grip
- Novel duplex interlock screw for lasting blade tension



(A)
#7250
10"



(B)
#7300
12"

WISS INLAID®

Finest Quality You Can Buy!



INDUSTRIAL AND PROFESSIONAL SHEARS

- Hot Drop-Forged
 - Black Handles
 - Commercial Finished Blades
- #20 - 10" Length Left or Right Hand **(C)**

#20LH 12" Length Left Hand **(D)**

IN STOCK

WISS



INDUSTRIAL THREAD NIPPERS

(E)
#TC1
4-3/4"

Quality hot drop-forged cutlery steel. Self-opening spring-action assures fast effortless cutting. Fully nickel-plated. Sharp points.

INTERMEDIATE UPHOLSTERY KIT

#B-4

Kit Contains:

- 1 ea. No. 222-C Tack Hammer
- 1 ea. No. 255 Webbing Stretcher
- 1 ea. No. 146 Claw Tool
- 1 ea. No. 504-6 Straight Needle 6"
- 1 ea. No. 501 1/2- 3" Curved Upholstery Needle
- 1 ea. No. 502 1/2- 4" Curved Upholstery Needle



INTERMEDIATE UPHOLSTERY KIT

#B-11

Best Value!

Kit Contains:

- 1 ea. No. 33 Bronze Magnetic Hammer
- 1 ea. No. 253 Gooseneck Stretcher
- 1 ea. No. 201 Claw Tool
- 1 ea. No. 402 Ripping Chisel
- 1 ea. No. 76 1/2 Knife
- 1 ea. No. 520 - 8" Regulator
- 1 ea. No. 501 1/2- 3" Curved Needle
- 1 ea. No. 501 1/2- 4" Curved Needle
- 1 ea. No. 501 1/2- 6" Curved Needle
- 1 ea. No. 502 1/2- 4" Curved Needle
- 1 ea. No. 504 - 8" Straight Needle
- 1 ea. Instruction Book
- 1 ea. Yardage Chart



(F)

TYPAR SEAT LISTING

With or without cord

For automotive and furniture seating. Reemay black Typar folded in half and stitched to hold rod to hog tie seat.

1" roll 1-1/2" roll 2" roll
(100 yard rolls)

(G)



3/4" HOG RINGS
per lb. or per Box of 25 lbs.

MARKING CHALK

PRANG

- 31144 Hygieia White or Yellow
- per Box /12 pieces
- Sleeve /144 pieces
- Case /12 sleeves

IN STOCK



DIXON PHANO®

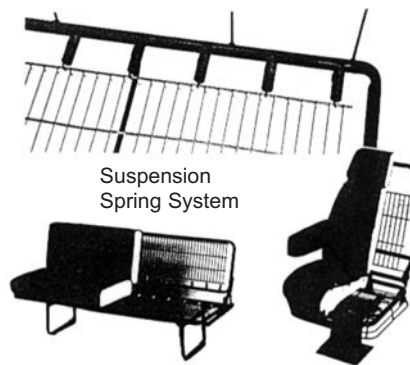
CHINA MARKERS

- Perfect for marking on Glass, Plastic, Film, Paper, Metal, Rubber or any Smooth Surface
- Paper Wrapped with Pull String
- PMA Certified Non-toxic
- Available in **Black, White or Yellow**

Box/12



PERMA-MESH Spring Suspension System



Suspension Mesh

- Size**
- 12"
 - 13"
 - 14"
 - 15"
 - 16"
 - 17"
 - 19"
 - 24"

IN STOCK!

Perma-Mesh is the solution to after market spring system replacement. Ideal for rebuilding older spring systems in cars, trucks, vans, RV's and sleeper sofas.

IN STOCK

HEAT GUNS

PROFESSIONAL HEAT GUN (A)

The **FURNO 700** tool has the most precise temperature settings from 125°F - 1300° F and five fan settings and cool down settings to help accomplish many projects that require heat. The two nozzles (glass protector & flare nozzles) make it ideal for a variety of projects such as softening putty and caulk, stripping paint and thawing frozen pipes. Also includes an integrated stand for safe hands-free operation. 1500 Watts/5100 BTUs.



#0503070

HEAT GUN (SMALL) (B)

The **FURNO 300** dual-temperature heat gun is a basic tool that can be used for dozens of applications that require heat. Including stripping paint. Two temperature settings: 750° F and 1100°F. Ergonomic design for comfort & balance to reduce fatigue & the side bars prevent the hot nozzle from touching the work surface. Integrated stand for safe hands-free operation and also includes a hanging loop for storage. 1200 Watts/ 5100 BTUs.



#0503059

AUTO TRIM TOOLS



#OSB-K752 Set of Four HEADREST RELEASE KEYS

For use on most American cars. (1/4", 5/16", 1/2" and 3/4" blade widths).



#OSB-758 DOORHANDLE CLIP REMOVER



#OSB-760 TRIM PAD REMOVER



#OSB-757 MOULDING RELEASE KEY

GOOD

EZE HOG RING PLIERS (H)

- Double-dipped sponge-type handle
- Built-in closing spring on all 3 models
- Made of #55 High-carbon steel



#TI-440A Straight Handles, 6 3/4" Long



#TI-440B Handles bent at 135° angle to jaw



#TI-440C Handles bent to reach difficult spots.

BETTER

HOG RING PLIERS (I)

- Nickel

#XX Straight Handles



#XXL Handles bent at 135° angle to jaw



BEST

OSBOURNE HEAVY DUTY HOG RING PLIERS

SPECIAL ORDER

With Vinyl Handles
Made of Forged Steel with No Springs



#1440-A Straight Handles, 6 3/4" Long



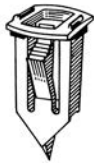
#1440-B Handles bent at 135° angle to jaw



#1440-C Handles bent to reach difficult spots. Jaws and handles are aligned.

IN STOCK AT LDC!

GM CLIPS & FASTENERS



11118
Nylon
Headliner Clip,
Inner Side Front,
Center and Rear
GM 1973-on
pkg. /10



16865 Nylon
Garnish Moulding Clip. Buick
Century & Regal, Chevrolet
Camaro, Celebrity, Monte
Carlo & Malibu, Oldsmobile
Cutlass & Ciera, Pontiac
Firebird, Grand Prix & 6000;
1978-on
pkg. /25



17666
Nylon
Garnish Moulding Clip, Back
Window & Upper Side Moulding
Garnish, Buick Le Sabre, Cadillac
Fleetwood, Brougham. Chevrolet
Caprice & Impala, Olds Delta 88
& 98, Pontiac Bonneville and
Parisienne, 1989-80
pkg. /25



18398
Nylon
Windshield Upper
Garnish Clip,
GM A & G Models 1988-78
pkg. /10



12594
Nylon
Moulding Clip, GM 1980 -on
pkg. /25



9633
Windshield Upper &
Lower Moulding Clip
GM 1967-on
pkg. /100



9639
Windshield, Skylight,
Rear & Quarter Window
Reveal Moulding Clip, GM
1966-on
pkg. /50



9749
Windshield, Skylight, Quarter
& Rear Window Reveal
Moulding Clip. GM 1968-on
pkg. /50



12563
Nylon
Quarter Belt Reveal
Moulding Clip,
GM 1980 -on
pkg. /50



8583
Rear Window Reveal
Moulding Clip,
GM 1965-on
pkg. /100



14642 Nylon
Quarter Belt Reveal
Moulding Clip, 7/16" wide,
31/32" long,
GM 1980 -on
pkg. /50

IN STOCK

TRIMMING CLIPS & FASTENERS



19378 Zinc
Universal Moulding Fastener
#10. 24 x 3/4" Bolt, 2-1/2" x
3/4" Plate, Break Off Plate at
1/16" Perforations to Fit
Moulding. Replaces 2356,
use with Hex Nut 730
pkg. /25



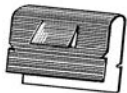
8581 Nylon
Moulding Fastener, Break
Off Plate at Perforations to
Fit Moulding
pkg. /10



Cloth Lined
Cushion
Spring Clip
to Fasten Springs to
Each Other or to Border
Wires. 7/8" Long.
7707 For 1/4" or Two 8
Gauge Wires pkg. /100



9416
Snap-on Trim
Clip, Panel
Range: .060" - .090"
pkg. /100



9417
Snap-on
Trim Clip, Panel
Range: .105" - .115"
pkg. /100



9850
Blue Nylon
Landau Top Moulding Clip,
Use With Screw 9877
pkg. /100



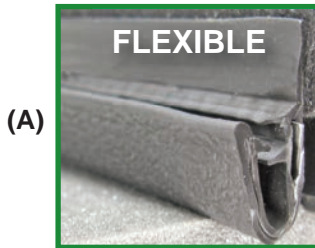
9877
Stainless Steel
#4 - 24 x 3/8", 7/32"
Head Diameter, Type AB,
Used in Place of Welded
Studs on Landau Tops.
pkg. /100

“J” and “ARROW” Style Seat Clips

**For Automotive Seating, Upholstery
and Leather Kit Installations**

- Designed to work in place of Hog Rings
- Large OEM selection stock at LDC
- Extruded strip can be cut to desired length

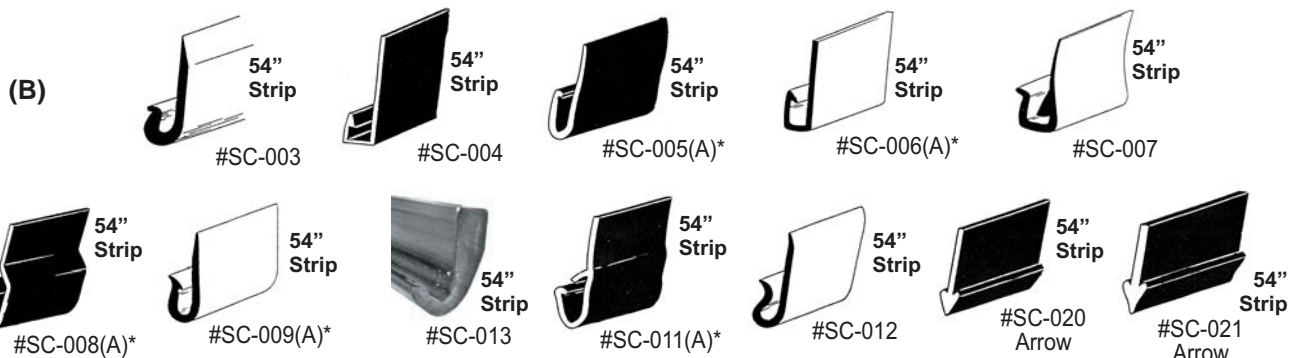
- PVC extruded seat clips sew directly into edge of seat fabric. They fasten neatly and easily right onto seat, distributing fabric tension across seat.



**Black Snap-On-Seat
Clip Style With Steel
Core & Long Flange**

200 ft. roll
Sold by the foot or roll

XS00



* Part numbers followed by (A) will use both styles of the Arrow products.

SPONGE RUBBER WEATHERSTRIPS

- EPDM Neoprene Blend
Closed Cell
- Lightweight
• Weather Resistant

IN STOCK



#4738
1/2" Half
Round Sponge
Rubber
50 ft. roll



**#4742 Trunk & Lid
Weatherstrip**
GM 1959-on
Ford 1949-on
Studebaker 1967-55
50 ft. roll



**#16391 Door
Flange Weatherstrip**
GM 1955-on
15 ft. roll



**Extruded Sponge
Rubber.** Will not
absorb water or moisture. Without cement.

#19341 1/8" thick x 3/4" wide 25 ft. roll
#4740 1/8" thick x 1-1/2" wide 25 ft. roll



**#16390
Door Flange
Weatherstrip**
GM, Ford & Chrysler
Cars & Trucks
15 ft. roll



**#16395
Trunk &
Rear Deck
Gutter Weatherstrip - GM**
15 ft. roll

Phillips Overhead Finishing Screws

IN STOCK

With No. 2 Drill Point
Black

Part No.	Size
#11454	8x5/8"
#11455	8x3/4"
#11456	8x1"



pkg. /100
pkg. /100
pkg. /50

Phillips Oval Head Countersunk Washer Tapping Screws

Jet Black

Part No.	Size
#11787	8x5/8"
#11788	8x3/4"
#11789	8x1"



pkg. /100

Phillips Oval Head Tapping Screws

Chrome Plated

Part No.	Size
#3068	4x1/2"
#3069	4x3/4"
#2698	6x1/2"
#1794	6x3/4"
#1796	6x1"
#2707	8x1/2"
#2710	8x3/4"
#2713	8x1"
#2718	8x1-1/2"
#2722	10x1/2"
#2728	10x3/4"
#2731	10x1"
#2735	10x1-1/4"



pkg. /100

Phillips Oval Washer Head Tapping Screws

Chrome Plated

Part No. Size
pkg. /100

#2771	8x5/8" 6HD
#2751	8x3/4" 6HD
#2772	8x1" 6HD



Slotted Oval Head Tapping Screws

Bright Zinc Chromate

Part No. Size

#1149	8x3/4"
#1137	8x1"



pkg. /100

WASHERS – Nickel Plated Brass (100 /pkg.)

Screw Size	Flush Type Washers			Countersunk Type Washers			Flanged Type Washers		
	Part No.	I.D.	O.D.	Part No.	I.D.	O.D.	Part No.	I.D.	O.D.
#6	#602	5/32"	11/32"	#612	9/64"	3/8"	#3469	5/32"	1/2"
#8	#604	3/16"	3/8"	#616	13/64"	1/2"	#2515	13/94"	5/8"
#10	#16015	13/64"	15/32"	#618	1/4"	19/32"	#3471	1/4"	11/16"
				#619	9/32"	11/16"			



Flat Push On Retainers

For Non-Threaded Fasteners
Zinc Plated, 1/8" Stud Size, 3/8" O.D.

#8863 pkg. /100

SNAP-CAPS® The Cap and Washer Combination
Your fastener fits securely into plastic washer, the cap snaps over washer providing an airtight seal that excludes atmosphere and protects fastener. Helps conceal obtrusive fasteners improving finish of your product.



Sizes: #8 to fit #6 & #8 screws
#12 to fit #10 & #12 screws

SNAP-CAPS (all same color)
pkg. /50 washers & 50 SNAP-CAPS
pkg. /1000 washers & 1000 SNAP-CAPS
#8 Pan Head Screws for SNAP-CAPS,

(A)

zinc plated
#8 x 1/2" pkg. 100 pkg. 1000
#8 x 3/4" pkg. 100 pkg. 1000
#8 x 1" pkg. 100 pkg. 1000



COLORS AVAILABLE:

White
Antique White
Beige
Cream
Caramel
Sky Blue
Royal Blue
California Blue
Teal
Forest Green
Dark Jade
Blaze Red
Old Burgundy
Aluminum Tone
Gun Metal
Black
Anodized Bronze

CLIP AND PANEL FASTENERS

<p>#2288 Door & Window Crank Handle Retaining Clip GM, Ford & Toyota pkg. /100</p>	<p>#2309 Door Trim Panel Fastener All Cars with .125 Panels, Ford pkg. /100</p>	<p>#2310 Door Trim Panel Fastener Chrysler pkg. /100</p>	<p>#2672 Front Seat Hinge Arm Clip, GM pkg. /100</p>	<p>#9361 (Ford: 358470; Chrysler: 1900654) Door Trim Panel Fastener; Ford & Chrysler pkg. /100</p>	<p>#11406 Trim Clip Fastener Head Diameter 1/2" For 1/4" Hole pkg. /100</p>	<p>#11863 Phosphate Door Trim Panel Fastener Ford pkg. /50</p>
---	--	---	---	---	--	---

IN STOCK AT LDC!



LARRY DENNIS COMPANY

TRIM RETAINERS AND FASTENERS



10621 White Nylon
Door Trim Panel and
Headliner Retainer
GM 1971-on
pkg. /50



11612
Black Nylon
Weatherstrip Fastener
GM, Ford, AMC
pkg. /50



11671
White Nylon
Seat back
Panel Retainer
Ford 1977-on
pkg. /25



11672
White Nylon
Trim Panel Retainer
Ford 1976-on
pkg. /25

FOR GM, FORD, CHRYSLER, AMC

IN STOCK



11673
Natural Nylon
Interior Trim
Panel Retainer
GM & Chrysler 1977-on
pkg. /50



11675
Natural Nylon
Roof Headliner
Retainer
GM & Chrysler 1982-on
pkg. /50



11680
Black Nylon
Dash Panel
Retainer
GM 1977-on
pkg. /50



11774
White Nylon
Door Trim
Panel
Retainer
GM 1971-on
pkg. /50



11796
White Nylon
Door Trim
Panel Retainer
GM 1978-on
pkg. /50



11797
White Nylon
Interior Trim Panel
Ford 1977-on
pkg. /50



12565
Black Nylon
Door Trim
Panel Retainer
Ford 1981-on
pkg. /25



12671
3/4" Nail (.750)
Replaces "nail on" door
panel repair clips. GM.
pkg. /50



12731
Black
Nylon
Seat Back
Retainer
GM Camaro
& Firebird 1982-on
pkg. /25



12737
White
Nylon
Door Panel
Retainer
GM
Camaro
& Firebird 1982-on
GM Truck 1989-on
pkg. /25



12759
Black Nylon
Trim Panel
Retainer
GM Trucks 1981-on
pkg. /25



12909
Black Nylon
Trim Panel
Retainer
Ford 1980 -on
pkg. /50



12992
White Nylon
Door Trim Panel
Retainer
GM 1983 -on
pkg. /25



13461
White Nylon
Retains Conduit
to Sheet Metal
in Doors
GM
pkg. /25



14032
Black Nylon
Pillar Cover Retainer
GM Truck
1985 -on
pkg. /10



14921
Black Nylon
Door Weatherstrip
Retainer
GM 1974 -on
Dodge RAM 1994 -on
pkg. /50



15480
Black Nylon
Trim Panel
Retainer
Ford 1983 -on
pkg. /50



15669
White Nylon
Trim Panel
Retainer
GM 1987 -on
pkg. /50



16938
Black Nylon
Trim Panel
Retainer
GM Trucks
1991 -on
pkg. /50



17599
Black Nylon
Radiator Grille
Retainer
GM S-10 & S-15
Pick-ups
1991 -on
pkg. /25



18371
Gray Nylon
Door Trim
Panel Retainer
Chev. Astro &
GMC Safari Mini-Vans
1994 -on
pkg. /25



18680
Black Nylon
Headlining Trim
Finish Panel Retainer
Buick Skylark,
Chevrolet Camaro,
Cavalier, Lumina & Monte
Carlo, Oldsmobile Cutlass and
Pontiac Firebird, Grand Am,
Grand Prix & Sunfire, 1992 -on
pkg. /25



19270
White Nylon
Trim Panel Retainer
Buick Century &
Regal, Chevrolet
Venture, GM Truck,
Express/Savanna, Olds,
Express/Savanna, Olds,
Silhouette & Pontiac
Trans Sport 1997 -on
pkg. /50



19527
Yellow Nylon
Door Garnish Moulding
& Pillar Trim Panel Retainer
Buick Century & Regal, Chev.
Venture, Olds Intrigue &
Silhouette, Pontiac Grand Prix
and Trans Sport 1997 -on
pkg. /25

PREMIUM® FASTENERS

IN STOCK














*of the **Highest Quality, Functionality & Longevity***

• Ideal for Leather, Vinyl and Canvas Applications

Fasnap Brand snap fasteners sets the standard for strength

DURABLE FASTENERS

Call for Prices on Quantities of 1,000 and 10,000.

PER BOX OF 100								
Part No.	Desc.	Nickel Plated Brass	Solid Brass	Stainless Steel	Part No.	Desc.	Nickel Plated Brass	Stainless Steel
 P-10127	1/4" Long Barrel Button Cap	Box	Box B-10127	X8-10127 Box SS-10127	 P-10362-12	3/8" Self Tapping Screw	Box	SS-10393-12 Box
 P-10128	11/64" Regular Barrel Button Cap	Box	Box B-10128	XN-10128 Box SS-10128	 P-10362-20	5/8" Self Tapping Screw	Box	SS-10393-20 Box
 P-10224	Socket Normal Action	Box	Box B-10224	XN-10224 Box SS-10224	 P-10704-12	3/8" No. 8-32 Machine Screw	Box	—
 P-10370	Stud, Regular Clinch Type	Box	Box B-10370	NS-10370 Box SS-10370	 P-10704-20	5/8" No. 8-32 Machine Screw	Box	—
 P-10379	Deep Stud, Lays Flat Inside	Box	—	—	 P-10708-12	3/8" No. 10-32 Machine Screw	Box	—
 P-10412	1/4" Regular Barrel Eyelet	Box	Box B-10412	NS-10412 Box SS-10412	<p>HAND TOOL SET</p> <p>#UCS-1T</p> <p>Includes setting punch & dies for Durable DOT X2-10127, X2-10128, BS-10412 & BS-10413 P-10708</p> 			
 P-10413	5/16" Long Barrel Eyelet	Box	Box B-10413	—				

Call for Prices on Quantities of 1,000 and 10,000.

SPECIAL ORDER ONLY

For the Custom Look...



G-10128
Button Cap
each



G-10362-20
5/8" Self
Tapping Screw
each



Gold
Wire-On Tips
each

**24KT GOLD PLATED
FASTENERS**



Gold Wire-On
screws
each

Brass or Nickel Sheet Metal Grommets

for Canvas and Marine Applications

- Brass or Nickel Plated Brass
- Meets Latest Military and Commercial Specs

Part No.	Desc.	count
#00 G&W	5/16" hole	One gross grommets & washers per box
#0 G&W	1/4" hole	One gross grommets & washers per box
#1 G&W	9/32" hole	One gross grommets & washers per box
#2 G&W	3/8" hole	One gross grommets & washers per box
#3 G&W	7/16" hole	One gross grommets & washers per box
#4 G&W	1/2" hole	One gross grommets & washers per box
#5 G&W	5/8" hole	One gross grommets & washers per box

(A) - Brass

(B) - Nickel

IN STOCK



Drop Forged Steel




#OSBK-235 HOME GROMMET KIT
Includes cast malleable iron die, cutting punch, small cutting board, one gross of brass sheet metal grommets and washers and complete instructions.

Size #0 1/4" Grommet	Size #2 3/8" Grommet
Size #1 9/32" Grommet	Size #3 7/16" Grommet

ROLLED RIM SPUR GROMMETS AND WASHERS

#OSBG-2 GROMMETS AND WASHERS



Size #2 3/8" Dia. Hole	Gross
Size #3 7/16" Dia. Hole	Gross
Size #4 9/16" Dia. Hole	Gross

#OSB-500 GROMMET HOLE CUTTER



Size #0-A 1/4"	Size #3-A 7/16"
Size #1-A 9/32"	Size #4-A 1/2"
Size #2-A 3/8"	Size #5-A 5/8"

#OSB-217 GROMMET INSERTING DIE

For Rolled Rim Spur Grommets Above

Size #2	Size #3	Size #4
---------	---------	---------

Brass or Nickel Plated



Self Piercing Grommets & Washers


- No Hole Needed!
- Heavier Gauge Brass
- Pierce & Set in One Single Action

Grommets & Washers

Size #2 /Box of 500

(C)

#OSB-223 REVOLVING PUNCH



Fine quality inexpensive nickel plated pressed frame revolving punch. Includes six heat treated drive tubes.

Sizes 1,2, 3, 4, 5 & 6.

PLAIN GROMMET INSERTING DIE



Male sits flat on base.

Osborne No. 216

Sets plain rim grommets and washers. Sizes 00 thru 5 are CN machined from high grade tool steel, while sizes 6 & up are a malleable iron casting. Properly machined and hardened. The fine industrial grommet dies made. For best results use only Osborn grommets and washers G1, B1, N1 & SS1 with corresponding size

Size No.	Weight each (lbs)	Weight each (oz)	UPC No.	Size No.	Weight each (lbs)	Weight each (oz)	UPC No.
00	1	6	13212	5	2	10	13224
0	1	6	13214	6	3	15	13226
1	1	7	13216	8	3	16	13230
2	1	7	13218	10	3	10	13232
3	1	9	13220	11	4	15	13234
4	2	8	13222	15	5	15	13236











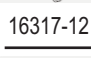
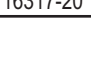
PREMIUM® FASTENERS

IN STOCK

"When Strength and Durability are Essential"








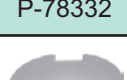
ONE-WAY-LIFT FASTENERS

Lift-the-Dot is a heavy-duty fastener which locks on three sides. It is opened by lifting the fourth side at point where the dot and the embossed trademark Lift-the-Dot appears.

Part No.	Desc. Brass/Nickel	Box /100
 16205	Socket, Regular Prong	Box
 16206	Socket, Long Prong	Box
 16506	Clinch Plate for XX- 16205 & XX-16206	Box
 16349	Stud, Single, Two Prong Clinch Type	Box
 16501	Clinch Plate for BS-16349	Box
 16358	Stud, Single, Eyelet Type	Box
 16509	Washer for Stud XB- 16358	Box
 16366-12	Stud with 3/8" #8 Self Tapping Screw	Box
 16366-20	Stud with 1/2" #8 Self Tapping Screw	Box
 16362	Stud with 8-32 Machine Screw	Box
 16317-12	Stud with 3/8" #8 Brass Wood Screw	Box
 16317-20	Stud with 5/8" #8 Brass Wood Screw	Box

Directional Fasteners Quality Economy Turn Fasteners

(All finishes are Nickel Plated Brass)

Part Number	Description	Pkg. Quantity
 P-78322	Single Stud, Two Screw Base	100 ct.
 P-78323	Double Stud, Two Screw Base	100 ct.
 P-78324	Single, Wood Screw Base	100 ct.
 P-78315	Single, Self Tapping Screw Base	100 ct.
 P-78403	Eyelet, 4-Prong Type	100 ct.
 P-78505	Washer for 4-Prong Eyelet	100 ct.
 P-78332	Single, Two Prong Type	100 ct.
 P-78507	Clinch Plate for 2-Prong Eyelet	100 ct.



LIFT-THE-DOT™ HAND TOOLS

#L-6 Cutting Punch
for XX-16205 &
XX-16206



#71 Cutting Punch
for BS-16349 Stud

COMMON SENSE HAND TOOLS



#C-4 Cutting Punch
for BS-78403 Eyelet



#71 Cutting Punch
for XB-78332



Screwdriver for
XX-78315 and
XB-78324 Stud

Parts and Dies for Use with PNS Hand Tool (at Right)

- A - Basic Die Set
- B - Durable Die Set (Durable Dies Only)
- C - Durable Button/Cap Die (93-10128)
- D - Durable Socket Die (93XB-10224)
- E - Durable Eyelet Die (93-10412)
- F - Durable Stud Die (93-10370)
- G - Rubber Retainer (M2700 Gray)
- H - Small "O" Ring
- I - Stud "O" Ring
- J - #00 Grommet Die Set
- K - #0 Grommet Die Set
- L - #1 Grommet Die Set
- M - #2 Grommet Die Set



Cap Die Socket Die Eyelet Die Stud Die

Baby Durable Die Set (20 Line) (Special Order Only)

PRES-N-SNAP Tool Set

Includes Basic Dies

IN STOCK

(N)



- Easy to change dies for setting numerous brands of fasteners...
- Standard and bab size snaps, regular and self-piercing grommets and other specialty applications.

Includes These Dies



IN STOCK

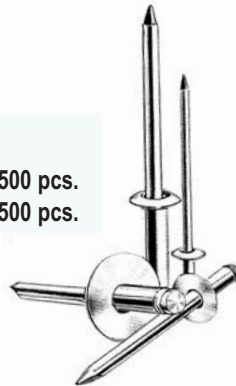
Made in USA

POP RIVETS

100% Aluminum Mandrel & Body

Size*	Range	Box 500 pcs.
1/8"	AD 44 ABS Size Range .188-.250	Box 500 pcs.
1/8"	AD 48 ABS Size Range .376-.500	Box 500 pcs.

*Other sizes available by special order.



#19234 Economy POP RIVET GUN

with 3/32", 1/8", 5/32" & 3/16" nose pieces



Size #30
pkg./12

CENTURY HIGH SPEED DRILL BITS

Double end, for drilling holes for #44 pop rivets and #8 sheet metal screws.

Trim Fasteners

IN STOCK



Veltex Carpet Snap Ring

#10123
ea.



Veltex Carpet Snap Socket

#10222
ea.



3/4" Windshield Clip (Marine)

#10388
ea.



7/8" Windshield Clip (Marine)

#10391
ea.

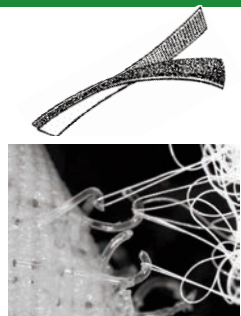


Buckle

#10616
ea.

LDC has been a leader in the trim supplies industry for over 45 years. Our knowledgeable staff is eager to help you. If you don't find the products you need... PLEASE GIVE US A CALL!

Hook & Loop



ECONOMY BRAND

For Use With:

- Applications
- Sign Installation
- Awning Assembly
- Luggage/Totes
- Vehicle Upholstery
- Household Upholstery
- Wiring Bundles
- Etc.

25yd. rolls

WIDTH

- 1"
- 1-1/2"
- 2"

If you have an assembly challenge, our Economy Brand can help you meet it.



Some of Today's Applications:

- Headliners
- Kick Panels
- Armrests
- Floor Mats
- Map Pockets
- Carpet
- Seat Tie Downs
- Headrests

Some of Tomorrow's Applications:

- Door Panels
- Quarter Panels
- Speaker Covers
- Seat Closures (zipper replacement)
- Rear Seat Attachments

- BLACK or WHITE -

STANDARD (SEW-ON)
PRESSURE SENSITIVE (STICKON)

Also--Heavy Duty Molded Nylon Hook for extremely high strength closure.

ALWAYS AVAILABLE IN HOOK OR LOOP
OTHER COLORS AVAILABLE BY SPECIAL ORDER

ONE-WRAP® dual sided, (one side loop one side hook)

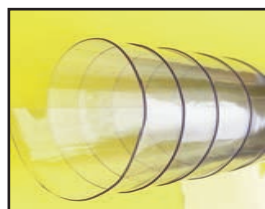
Easy to use hook and loop strapping tape wraps around packages, tools, bundles, to grip tightly, for strong, non-slip hold—

1" Black or White in Stock

Double Polished Clear Plastic

- Ideal Protective Covering for Vehicles, Boats, Motor Homes, Products, Supplies and Work Order Forms.

54" width



Available cut to Length or in rolls

Call for Pricing!

Thickness

- | | | | |
|----------|----------|----------|----------|
| .016 ga. | .020 ga. | .030 ga. | .040 ga. |
| (A) | (B) | (C) | (D) |

Sew-on Grip Stitch Attachment

For Seating Applications
1-1/2" wide (sold in package)
25 yd. roll



(E)

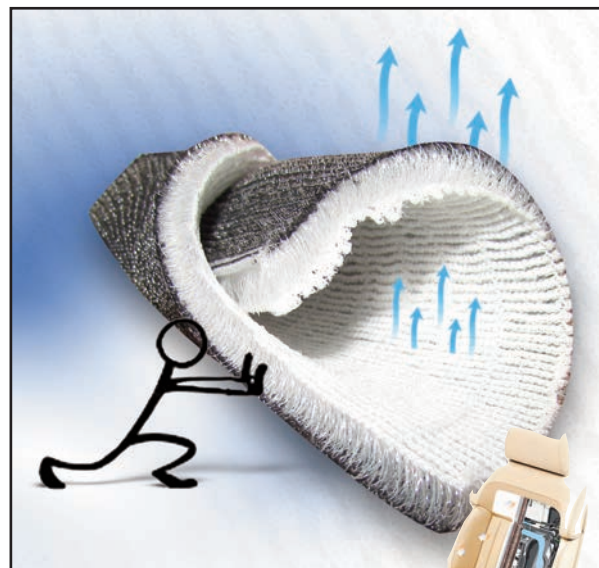
IN STOCK

Attachment Strip

NEW

OEM Air Condition Seat Foam

For use with Air Conditioned Seating
MAXIMUM AIR FLOW



60" width

Available in
3/8" and 1/2"
(F) (G)



THIS FOAM IS MADE IN THE U.S.A.

**IN STOCK
READY TO
SHIP!**

Foam Price Sheet

CHARCOAL HIGH DENSITY FOAM
Wholesale Price

High Density

Foam-C95 - 1"x24"x82"	
Foam-C95 - 2"x24"x82"	
Foam-C95 - 3"x24"x82"	

WHITE SEATING FOAM
Firm Density Price

Foam-C45 - 1/2"x24"x82"	
Foam-C45 - 1"x24"x80"	
Foam-C45 - 2"x24"x80"	
Foam-C45 - 3"x24"x80"	
Foam-C45 - 4"x24"x80"	
Foam-C45 - 5"x24"x80"	
Foam-C45 - 1"x54"x80"	
Foam-C45 - 2"x54"x80"	
Foam-C45 - 3"x54"x80"	
Foam-C45 - 4"x54"x80"	
Foam-C45 - 5"x54"x80"	

WHITE SEATING FOAM
Medium Density---

Foam-C38 - 1"x24"x96"	
Foam-C38 - 2"x24"x96"	
Foam-C38 - 3"x24"x96"	
Foam-C38 - 4"x24"x96"	
Foam-C38 - 5"x24"x96"	
Foam-C38 - 1"x54"x82"	
Foam-C38 - 2"x54"x82"	
Foam-C38 - 3"x54"x82"	
Foam-C38 - 4"x54"x82"	
Foam-C38 - 5"x54"x82"	
Foam-C38 - 5"x16"x73"	
Foam-C38 - 5"x20"x73"	
Foam-C38 - 5"x22"x73"	

FOAM BOLSTERS - 7"x8"x16"

Budget Price **1/4" SEW FOAM SPECIAL** With BACKING
60" WIDE

1 - 9 yds.	
10 yds.	
20 yds.	

Budget Price **1/2" SEW FOAM SPECIAL** With BACKING

--	--

DRY-QUICK FOAM
(for outdoor uses)

Water drains right through it!

3 sizes IN STOCK

Foam-DQ45	1/2"x26"x80"
Foam-DQ45	2"x26"x80"
Foam-DQ45	3"x26"x80"
Foam-DQ45	4"x26"x80"



Upholstery Foam Products

Pleating/Sewing Foam

(With cheesecloth backing)

Scrim #560P	Scrim #1460
1/2"x58"x20 yds.	1/4"x58"x50 yds.

PINK PLAIN FOAM - ROLLS

Foam-C56 - 1/4"x58"
Foam-C56 - 1/2"x58"

NOTE:
Polyurethane foam is a combustible material and proper care and uses are essential.

Closed Cell Foam

Assorted Thicknesses, 60" wide
1/8", 3/16", 1/4"

- USES:
- Sculpturing (for Automotive Interiors)
 - Vinyl top Padding
 - Carpet & Seat Padding
 - Etc.



#CCF-11 - T1-20 1/4" White 60" width
#CCF-12 - T1-20 3/16" White 60" width
#CCF-13 - T1-20 1/8" White 60" width

(Available by the yard or by the roll)

www.larrydennis.com

CALL US AT (817) 222-9700

High Quality Marine Replacement Carpets

IN STOCK

DORSETT

Aqua Turf Marine Carpet – 8-1/2 ft. wide

- 100% Olefin Pile
- UV Light Stabilized
- Low Water Retention
- Low Maintenance
- Water, Gas and Oil Resistant Backing
- No Fuzzing or Pilling
- Mildew & Moisture Resistant
- Color Coordinated to Marine Vinyls

Color	Item No.
Gulf Blue	5816
Indigo	5819
Sunset	5818
Driftwood	5804
Smoke	5845
Marble Grey	5810
Charcoal	5827

Color	Item No.
Teal	5862
Sand	5814
Forest	5870
Navy	5831
Black	5825



Ask for **SAMPLE # 10-17**

Snap Back

- 6' wide
 - For use with Marine Carpet
- When your marine carpet is glued on to "Snap Back", it enables you to "Snap" down your carpet and keep it from moving around.



Ask for **SAMPLE # 160401-1**

Bayshore Marine Carpet 6' wide

- 100% Olefin Pile
- No Fuzzing or Pilling
- Low Water Retention
- Color Coordinated to Marine Vinyls
- UV Light Stabilized
- Mildew & Moisture Resistant
- Low Maintenance

-Color	Item No.
Smoke	6445
Black	6425
Navy	6431
Sand	6414
Marble Grey	6410
Gulf Blue	6416
Royal Blue	6401
Cardinal	5828
Charcoal	6427
Indigo	6419
Sunset	6418
Cocoa	6438

Water, Gas and Oil Resistant Backing



Ask for **SAMPLE # 10-17**

Classic Marine Carpet – 6' wide

- 100% Polypropylene Pile
- Water, Gas and Oil Resistant Backing
- UV Resistant
- Resistant to Mold, Mildew and Staining
- Cleans Easily

Color	Item No.
Slate Grey	5210
Taupe	5205
Sapphire	5220
Charcoal	5227



Ask for **SAMPLE # 10-21**

All carpets on this page are Proudly **Made in the USA**

Mystic Marine Carpet – 8' wide

- 100% Polypropylene Pile
- Water, Gas and Oil Resistant Backing
- Unique Cut-N-Loop construction

Color	Item No.
Royal	6219
Sandstone	6205
Smoke	6245
Ocean Blue	6225
Charcoal	6227



Ask for **SAMPLE # 10-22**

Plush with Style

Outdoor Berber Carpet – 72" wide

- High Performance
- UV Stabilized
- 'Aqua Grip' Non-Slip Backing

Color	Item No.
Oatmeal	ODBC-101
Grey	ODBC-102



Ask for **SAMPLE # 09-12**



MARINE CANVAS



TOP NOTCH®

100% Solution Dyed Polyester
(840 Denier - 11.5 oz. per sq. yd.)

- 60" wide
- Mold & Mildew Resistant
- Excellent Water & Stain Resistance

Call for Sample



TOPGUN®

100% Acrylic Coated Polyester
(600 Denier - 11.5 oz. per sq. yd.)

- 62" wide
- Mold & Mildew Resistant
- Excellent Water & Stain Resistance

Call for Sample



Odyssey®

100% Acrylic Coated Polyester
(300 Denier - 6.5 oz. per sq. yd.)

- 64" wide
- Mold & Mildew Resistant
- Excellent Water & Stain Resistance

Call for Sample



DocrilFabrics®

100% Solution Dyed Acrylic
Weight: 9.0 oz. per sq. yd.

- 60" wide
- Mildew Resistant
- UV resistant
- Excellent breathability
- Excellent Water & Stain Resistance

Call for Sample

MARINE VINYL



SOFTSIDE MARINE COLLECTION

Quality Marine Vinyls
Patterns: Allegro, Apex, Aries, Belluga, Carbon Fiber, Dolce, Gemini, Heidi Soft Marine, Islander, Marlin, Navigator, Orion, Pegasus, Polaris, Reflex MQ, Seabreeze, Simtex, Trexx Met MQ, Zander

Ask for
SAMPLE # 1542-1



ENDURATEX®

SHIP-2-SHORE MARINE COLLECTION

Enduratex Marine Premium Vinyl Collection:

Armada, Brushed Aluminum, Carbon Fiber, Counterpane, Jetstream, Lighthouse, Lunar, Marine Headliner, Marine Underlining, Tradewinds, Windsong

FANDECK
sample available

SEAQUEST COLLECTION

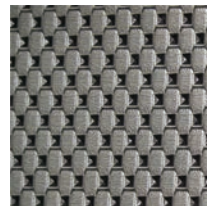


NASSIMI

- Marine Vinyls
- Roll 'N Pleat
- Matching Hidem & Welt

Ask for
SAMPLE CARD

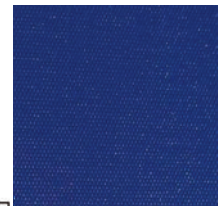
ADRENALINE COLLECTION



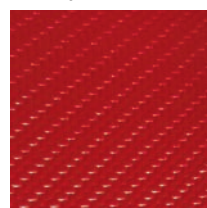
WAVE
12 Colors
Sample # 14911-1

Premium Marine Vinyl
by MORBERN

Morbern

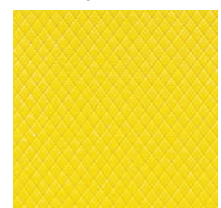


RUSH
12 Colors
Sample # 14924-1



SHOCK
8 Colors
Sample # 14919-1

- 54" Wide
- Cold Crack -25° F
- Abrasion (30K DR)
- Mildew Resistant
- 1000 hours Weathermeter



EDGE
14 Colors
Sample # 141110-1



CARBON FIBER

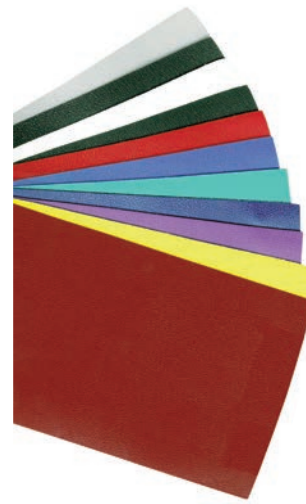
Premium Marine Vinyl by Enduralex

Stretchable Quality as well as soft hand touch.

- 54" Wide - 30 yard roll
- Heavy Duty Wyzenbeek
- Anti-Microbial / Anti-Bacterial
- Mildew Resistant
- 500 Hours UV Resistance
- Cold crack -10° F

Applications: Marine, Automotive / RV, Residential, Contract interiors, Hospitality, Office, Restaurant, Hotel / Motel

Sample #14626-3
FREE sample card



ALLSPORT

Marine Vinyl by MORBERN

- 360° 4 way stretch vinyl
- Cold crack -60° F
- Superior tailorability
- 1000 Hours Weather Resistance
- Abrasion Resistance 30,000 DR
- FMVASS 302

Applications: Marine, Jet Ski's, Automotive, Extreme Weather applications, All Terrain Vehicles, Golf Carts

Sample #0140
FREE sample card

SYMPHONY CLASSIC

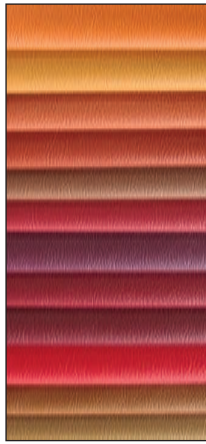
Premium Auto & Marine Vinyl by Nassimi

A Faux Leather with a soft & supple leather-like hand with the performance of vinyl.

- 54" Wide - 30 yard roll
- 500,000 DR Wyzenbeek
- Anti-Microbial / Anti-Bacterial
- Mildew Resistant
- 500 Hours UV Resistance
- Cold crack -20° F
- Stain Resistance with RESILIENCE

Applications: Marine, Automotive / RV, Residential, Contract interiors, Healthcare, Hospitality, Office, Restaurant, Hotel / Motel

Sample #180926-1
FREE sample card



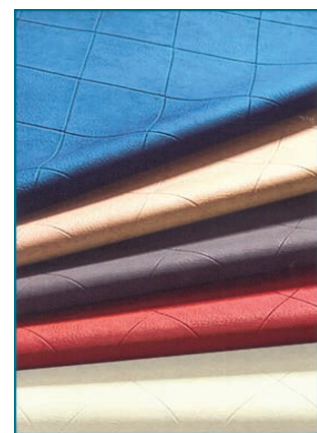
ARMADA

Marine Vinyl by Enduralex

- 54" Wide - 40 Yard roll
- 100% Virgin Vinyl
- QUV-B minimum 500 hours
- Heavy Duty Wyzenbeek
- Anti-Microbial / Anti-Bacterial
- Mildew treated front & back
- 1500 Hours Weatherometer
- Cold crack -10° F

Applications: Marine, Automotive / RV, Healthcare

Sample #14626-2
FREE sample card



COUNTERPANE

Marine Vinyl by Enduralex

- 100% Virgin Vinyl
- 54" Wide - 30 Yard roll
- Cold crack -10° F
- UV Stabilized Pigment 500 hours
- Abrasion: 100,000 cycles Wyzenbeek
- Anti-Microbial / Anti-Bacterial
- Mildew resistant

Applications: Marine, Automotive / RV, Hospitality, Healthcare, Residential

Sample #15629-2
FREE sample card

LUNAR

Marine Vinyl by Enduralex



Sample #14626-1
FREE sample card

- 54" Wide - 30 Yard roll
- Heavy Duty Wyzenbeek
- Anti-Microbial / Anti-Bacterial
- Mildew resistant
- 500 Hours UV Resistance
- Cold crack -10° F

Applications: Marine, Automotive / RV, Residential, Contract Interiors, Hospitality, Office, Restaurant, Hotel / Motel

LIGHTHOUSE

Budget Priced Marine Vinyl by Enduralex

- 54" Wide - 40 yard roll
- 500,000 DR Wyzenbeek
- Mildew & Anti-Microbial treated
- 500 Hours UV Resistance
- 1500 Hours Weatherometer
- Cold crack -10° F

Applications: Marine

Sample #09-43
FREE sample card



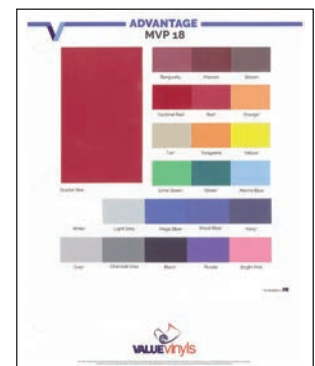
ADVANTAGE MVP 18

PVC Coated Polyester

- Up to 126" Wide - 75 yd. put up
- Mildew treated
- UV treated
- Cold crack -30° F

Applications: Marine, Automotive / RV, Exercise Mats, Punching Bags, Truck Tarp, Inflatables

Sample #0011
FREE sample card



Marine Big Croc

Marine Vinyl



Sample #230109-1
FREE sample ring

- 100% Vinyl Face
- 100% Polyester Backing
- 54" Wide - 30 Yard roll
- Cold crack -25° F
- UV resistance 650 hours minimum
- Abrasion Resistance : 100K Double Rubs
- Mildew resistant

Applications:
Marine Interior/Exterior

CAPTANO

by Nautolex



Sample #210713-1
FREE sample card

- 100% Vinyl Face - Polyester Knit Backing
- 54" Wide - 40 Yard roll
- Cold crack -20° F
- UV resistant (CFFA-2) Outdoor hours 650
- Abrasion: 6,000 cycles Wyzenbeek Cotton Duck abradant 50,000
- Mildew resistant

Applications:
Marine Interior/Exterior

MANY MORE MARINE VINYL SAMPLES AVAILABLE!

Ask for our SAMPLES CATALOG!



IN STOCK



#88396
Outside Eye End
 for 7/8" tube.
 Uses 1/4" bolt.



#88398
Jaw Slide for 7/8"
 tube, with 1/4" bolt.



#88313
Outside Eye End
 for 7/8" OD tube,
 uses 1/4" bolt.



#88345
Inside Eye End fits
 7/8" x .049 tube,
 uses 1/4" bolt.



#88545
Pad Eye, Cast
 1 7/8" L x 5/8" H
 Drilled for
 #10 screws.



#88323
Deck Hinge Side Mount
 7/8" x 2" base,
 1/4 - 20 panhead
 screw included.
 Drilled for #10 screws.



#88320
90° Deck Hinge
 7/8" x 2" base, 1/4 -
 20 panhead screw
 included. Drilled for
 #10 screws.



#88322
**Deck Hinge Angle
 Base**
 7/8" x 2" base,
 1/4 - 20 panhead
 screw included.
 Drilled for #10 screws.



#88547
Quick Release Pin
 with cable and tab.
 1/4" OD with 7/8"
 grip. 6" SS cable,
 nylon coated with tab.



#88998
D-Ring
 1 x 3/16" welded



#89000
Adjuster Buckle
 for 1" webbing.



#89005
Snap Hook
 for 1" webbing.
 2-1/8" overall



#89007
Fast Eye Snap Hook
 for 1" webbing.
 2" overall.
 1/4" x 3/4" inside dia.

IN STOCK

BRITE ANODIZED ALUMINUM TUBING



#6421
#6410

#6410 TM-5 Small Track,
 14 ft.,
 850 maximum

#6421 Awning Rail,
 16 ft., A-15-135° Anodized

Special Order

7/8" x .058 wall x 20'

Special Order

POLISHED STAINLESS STEEL TUBING

7/8" x .049 wall x 20'2"

ADJUSTABLE SUPPORT POLES

#3636 40" to 70"

#4848 48" to 96"

VINYL AWNING EXTRUSION

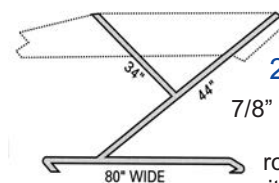
#6022 Black

PLASTIC AWNING RAIL

#6029 Black

UNIVERSAL BOAT TOP FRAMES

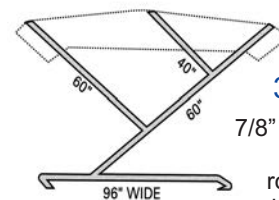
Ready to Assemble



**Standard
 2-Bow Frame**

7/8" x .058 drawn alum.
 brite anodized
 round tube **#4850**
 with nylon hardware

CAN GO UPS



**Bimini
 3-Bow Frame**

7/8" x .058 drawn alum.
 brite anodized
 round tube **#4851**
 with nylon hardware



IN STOCK

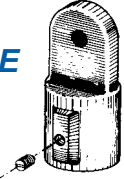
INSIDE EYE END



#7402
3/4" inside eye end

#7417
7/8" inside eye end

OUTSIDE EYE END



#7419
7/8" outside eye end

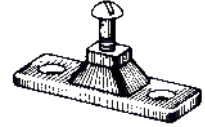
#7416
3/4" outside eye end

JAW SLIDE



#7418
7/8" jaw slide

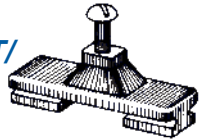
#7406
3/4" jaw slide



SIDE MOUNT
#7415

2-hole side mount

SIDE MOUNT/SLIDE



#7424
Fits 1.050 track

#7430
Fits .850 track

SLIDE LOCK

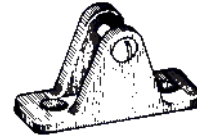


#7432
Slide lock for .850 track with fillister head screw

NYLON HEAD SCREW



#7424P 1/4" -20 screw. Fits all side mounts and deck hinges.



DECK HINGE
#7405 Large deck hinge

#7428 Large deck hinge/angled



DECK HINGE
#7401

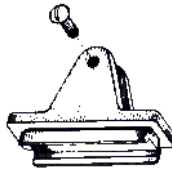
Small deck hinge



TRACK SLIDE

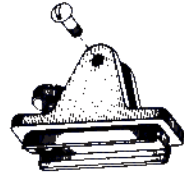
#7408 For deck hinge. Fits .850 track.

#7452 For deck hinge. Fits 1.050 track.



DECK HINGE SLIDE COMBINATION

#7431
Fits .850 track

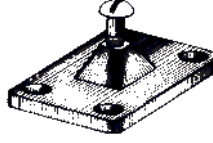


DECK HINGE SLIDE LOCK COMBINATION

Fits .850 track with fillister lock screw.
#7445L (left)
#7445R (right)



RAIL HINGE
#7443
For 7/8" rail



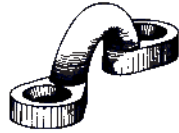
SIDE MOUNT
#7427
4-hole



LASH HOOK
#7460 1-hole

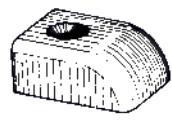


LASH HOOK
#7420 2-hole

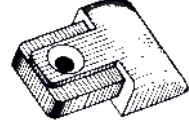


EYE STRAP
#7407

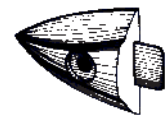
TRACK TRIM ENDS -(see above for track slide)



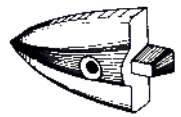
CHANNEL END CAP
#7404
Fits over .850 track



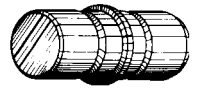
CHANNEL END CAP
#7429
Insert Fits .850 track



GUNNEL TRIM END
#7425 1-1/8"
#7409 1-1/4"



GUNNEL TRIM END
#7410 15/16"
#7486 1-7/16"



TUBE CONNECTORS
#7456 7/8"
#7448 3/4"

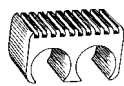


1" GUNNEL MOLDING END CAP
#7489



#7442 10" cleat for 1" rope

#7439 8" cleat for 5/8" rope



WINDOW SPACER AND BOAT TOP FRAME LOCK
#7630 for 7/8" tubing

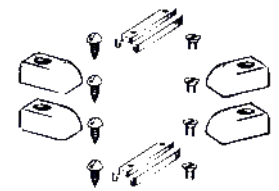


#7421 6" cleat for 7/16" rope

#7433 4-1/4" cleat for 5/16" rope



#7490
Sew in curtain track retainer



#7440 Slide Kit

IN STOCK

Molded Nylon Marine Zippers

Extra Strong for Rugged Marine and Outdoor Applications

Size	Description
#5	Continuous Chain
#5	Single Pull Slider
#5	Double Pull Slider
#10	Continuous Chain
#10	Single Pull Slider
#10	Double Pull Slider



(Black or White)

Ready Made Marine Zippers

Size #10 – Separating (Black or White)

• Molded Nylon • Resists Corrosion and UV Damage

Length	Length
18"	60"
24"	72"
36"	84"
48"	96"
54"	108"
	120"

Call for Quantity Pricing

Coil Chain Zippers

Continuous Chain (Black or White)

Size	Description
#4.5	Coil Chain
#4.5	Single Coil Slider
#5	Coil Chain
#5	Single Coil Slider
#10	Coil Chain
#10	Single Coil Slider



Call for Roll Pricing on Coil Zipper Chain.

Shock Cord and Hooks

Shock Cord (100 Ft. Roll)



Size
3/16"
1/4"
3/8"

sold by the foot or by the roll

Shock Cord Hooks

sold Each or by the package/100 ct.



Marine Buckles and Hardware

Nylon Side Release Dual Buckle



Sizes:

1" 1 1/2" 2"

sold Each or by the package/100 ct.

1" Stainless Steel Snap Hooks

2 1/8" Overall



1" D-Rings Nylon



per/100

Nylon Tri-Slide



1" 1 1/2" 2"

Each or by the 100

Polypropylene Marine Webbing

Available in Black or White



(100 yds. /Roll)
Cuts or Roll

Size Description

1"	Standard Weight
1"	Heavy Weight
1 1/2"	Standard Weight
2"	Seat Belt Type

Other Webbing Sizes Available

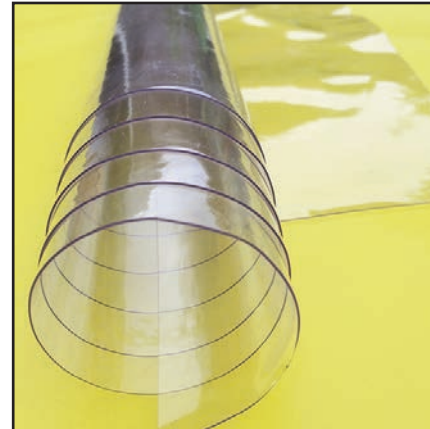
MARINE GRADE EISENGLASS

OSEA MARINE EISENGLASS

Size 54" x 110",
40 gauge

Sold by the sheet

NEW



IN STOCK

EISENGLASS CLEANING KIT

Keep that clear vinyl clear! Specially formulated cleaning products that can be used safely on your clear vinyl are now available. We've come up with the best cleaning solution to keep scratches, clouding and chemical damage from occurring. Suntan lotions, fuel vapors, dirt and even rain can make your view distorted. Protect your clear vinyl today using the easy 1, 2, 3 steps.





Kryptek provides the ultimate silhouette distortion for the dedicated hunter. Born out of the vast experience and insight Kryptek gained through the U.S. Military. Specially designed for those geographical regions and elevations that are varied.

*Marine • Automotive Interiors • Upholstery
Outdoor Applications • Seating • Baggage
Deer Stands • Wall Covering • Canopy*

- Kryptek - Mandrake
- Kryptek - Nomad
- Kryptek - Neptune
- Kryptek - Highlander

Kryptek Sample Ring
Sample #1221212-1



CAMOUFLAGE . . .

Fabrics & Vinyls



(Subject to change without notice)

Camo Sample Ring
Sample #12926-1
- FREE -

(Depending on Fabric)
APPLICATIONS:

- Headliner
- Deer Stands
- Canopy
- Deer Blinds
- Upholstery
- Clothing
- Seating
- Baggage
- Wall Covering
- Etc.

- Hidden Creek - Marsh
- Hidden Creek - Autumn
- Digital Camo - Green
- Digital Camo - Charcoal
- Woodland Camo - Tan
- Woodland Camo - Olive

CALL TO ORDER YOUR SAMPLE RING!

Other Products Catalogs from LDC



Street Rod Catalog

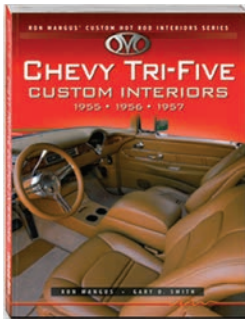


Marine Catalog



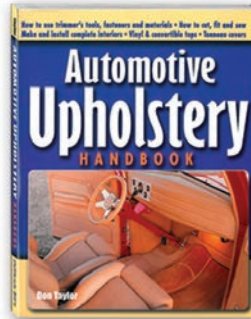
SAMPLES CATALOG

Upholstery Manuals



Chevy Tri-Five Custom Interiors by Ron Mangus & Gary D. Smith

Chevy Tri-Five Custom Interiors will inspire you with 18 examples of award-winning interiors by Ron Mangus. Get a detailed look at creative interior design solutions for seats, door, kick, and rear quarter panels, carpet, mats, headliner, trunk, seat bolsters, etc.
8 1/2" x 11", 160 full color pages



Automotive Upholstery Handbook by Don Taylor

Learn to sew vinyl, leather and fabrics as well as restore, recover and build bench and bucket seats for any car, truck, van, RV, boat or airplane.

8 1/2" x 11", 230 pages
550 b&w photos.



How to Restore & Customize Auto Upholstery & Interiors by Dennis W. Parks

Step-by-step how-to sequences show exactly how to upholster seats, install a headliner, and much more.

8 1/2" x 11", 159 pages,
all color photos and illustrations.



Follow us on Instagram!

Many Sample Cards and Stack Books to choose from.

CALL US!

We'll be happy to assist with your Sample needs!

CALL US AT (817) 222-9700



6121 Midway Road • Fort Worth, Texas 76117 • www.larrydennis.com
817-222-9700 • Fax 817-222-1457 • email: ldctx@att.net