



Ultraleather® | Linen



550-5744 Platinum



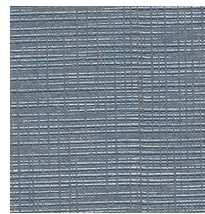
550-3086 Snowflake



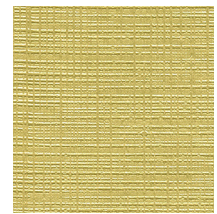
550-3087 Winter White



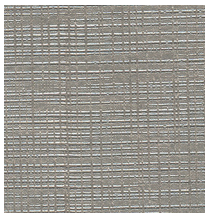
550-3088 Opaline



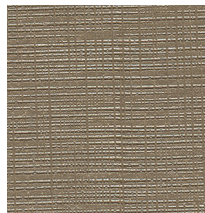
550-2638 Glacier



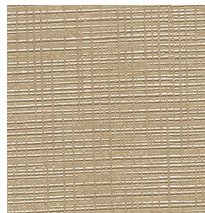
550-4444 Citrine



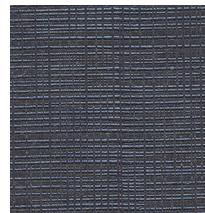
550-5744 Platinum



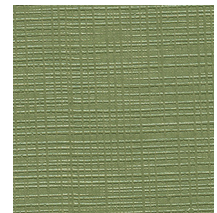
550-3071 Fawn



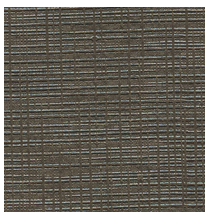
550-3089 Nude



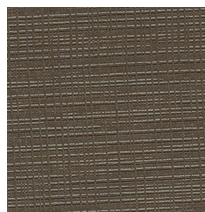
550-2544 Denim



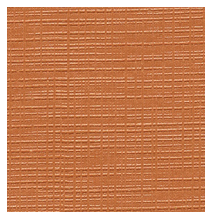
550-4447 Pea Pod



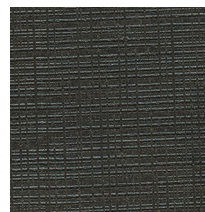
550-5783 Steel



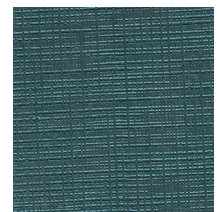
550-3522 Cola



550-8228 Autumn



550-5785 Black Diamond



550-7270 Peacock



Antimicrobial

Ultraleather® | Linen

General Specifications

Composition:

100% Polycarbonate Polyurethane Surface
65% Polyester, 35% Rayon Backing

Weight:

Approx. 9.7 oz. Per Square Yard
Approx. 330 Grams Per Square Metre

Thickness:

Approx. 1.0 Millimetres

Width:

54 Inches / 137 Centimetres

Repeat:

2.17"V x 0.98"H / 55mm V x 25mm H

Performance

Abrasion:

ASTM D4157 / 300,000 Double Rubs (Wyzenbeek)*
BS EN ISO 12947-2 / 180,000 Rubs (Martindale)*

*meets or exceeds

Hydrolysis:

14+ Weeks
ASTM D3690 Sect. 6.11 (Hydrolytic Stability)
ISO 1419 Method C (Accelerated Ageing)

Adhesion of Coating: ASTM D751

Tear Strength: ASTM D2261

Breaking Strength: ASTM D5034

Antimicrobial: ASTM E2180

Tensile Strength: BS EN ISO 1421

Colorfastness

Light Fastness: AATCC 16.3, 200 Hours, Grade 4
ISO 105 B02, Grade 6

Crocking: AATCC 8, Grade 4-5 Wet & Dry

Flammability Requirements

- ASTM E84 (Adhered) - Class A
- CA TB 117 - Pass
- FMVSS 302 & 95/28 Annex IV - Pass
- NFPA 260 - Class 1
- UFAC - Class 1

These fabrics, when treated and/or used with other compatible furniture components, have been shown to perform under the fire test conditions of:

- ASTM E84 (Unadhered)
- BS 5852 Source 0, 1 & 5 (Cig, Match & Crib 5)
- BS 5867 Part 2 Type B
- BS 7175
- FAR Specifications
- IMO Part 8
- NFPA 701

For more information on certifications and standards, sustainability, as well as cleaning and care instructions, please visit our website.

