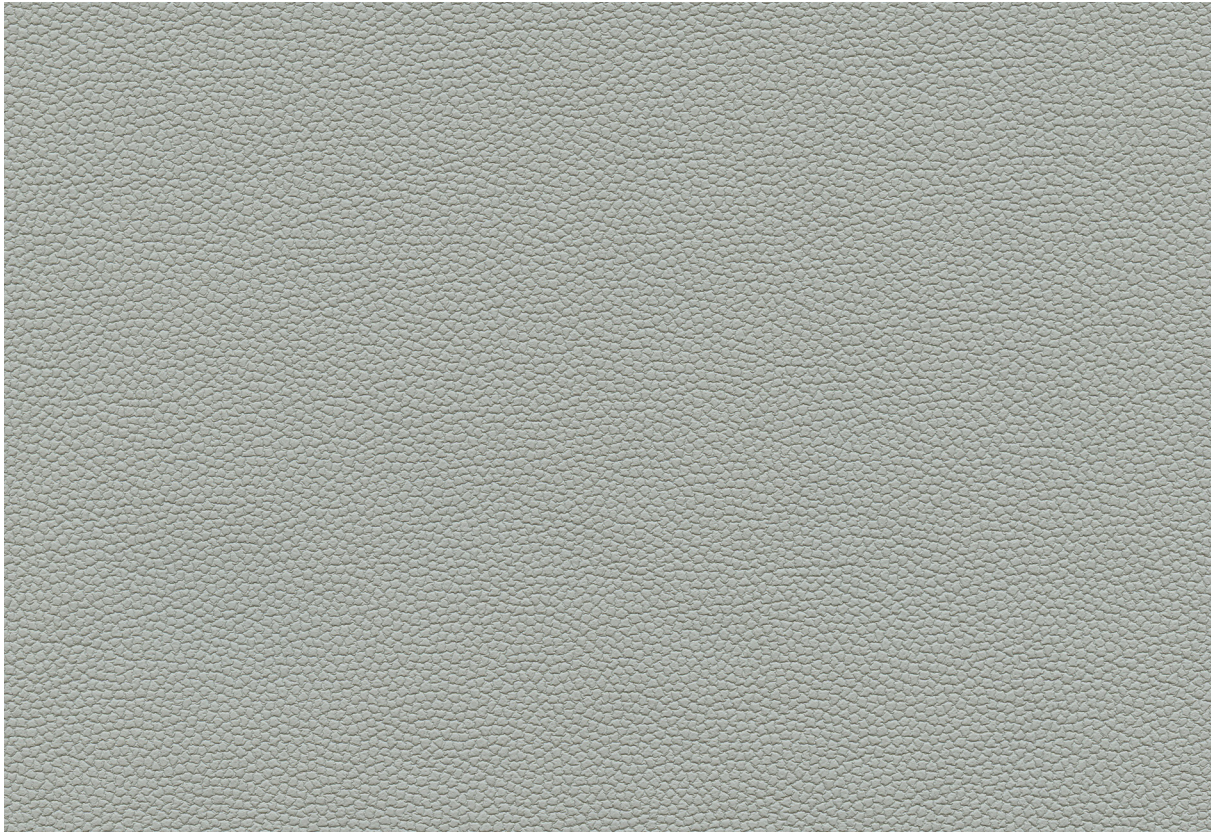




Ultratech[®] | Cove



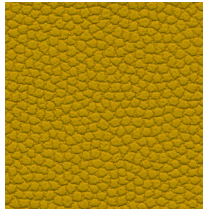
593-5971 Sleet



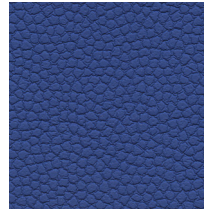
593-5970 Soft White



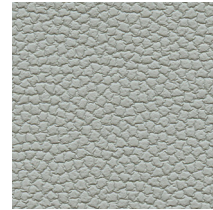
593-3301 Mummy



593-5247 Sun Flower



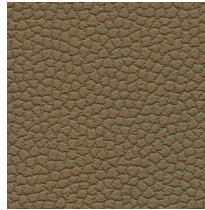
593-2619 Capital Blue



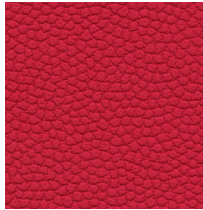
593-5971 Sleet



593-5972 Marlin



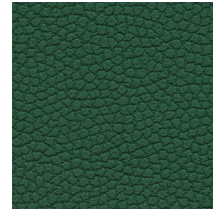
593-3302 Malt



593-7210 Guava Berry



593-2599 Marine



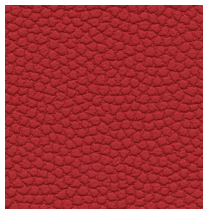
593-4423 Emerald



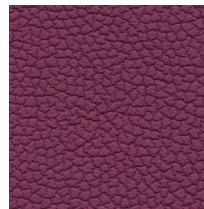
593-5943 Black Swan



593-3304 Grizzly



593-1327 Cherry Red



593-9313 Lychee

Ultratech® | Cove

General Specifications

Composition:

100% Polycarbonate Polyurethane Surface
65% Polyester, 35% Rayon Backing

Weight:

Approx. 10.3 oz. Per Square Yard
Approx. 350 Grams Per Square Metre

Thickness:

Approx. 1.1 Millimetres

Width:

54 Inches / 137 Centimetres

Repeat:

None

Performance

Abrasion:

ASTM D4157 / 200,000 Double Rubs (Wyzenbeek)*
BS EN ISO 12947-2 / 200,000 Rubs (Martindale)*

*meets or exceeds

Hydrolysis:

14+ Weeks
ASTM D3690 Sect. 6.11 (Hydrolytic Stability)
ISO 1419 Method C (Accelerated Ageing)

Adhesion of Coating: ASTM D751

Tear Strength: ASTM D2261

Breaking Strength: ASTM D5034

Tensile Strength: BS EN ISO 1421

Colorfastness

Light Fastness:

AATCC 16.3, 200 Hours, Grade 4
ISO 105 B02, Grade 6

Crocking:

AATCC 8, Grade 4-5 Wet & Dry

Flammability Requirements

- ASTM E84 (Adhered) - Class A
- CA TB 117 - Pass
- FMVSS 302 & 95/28 Annex IV - Pass
- NFPA 260 - Class 1
- UFAC - Class 1

These fabrics, when treated and/or used with other compatible furniture components, have been shown to perform under the fire test conditions of:

- ASTM E84 (Unadhered)
- BS 5852 Source 0, 1 & 5 (Cig, Match & Crib 5)
- BS 5867 Part 2 Type B
- BS 7175
- FAR Specifications
- IMO Part 8
- NFPA 701

For more information on certifications and standards, sustainability, as well as cleaning and care instructions, please visit our website.

