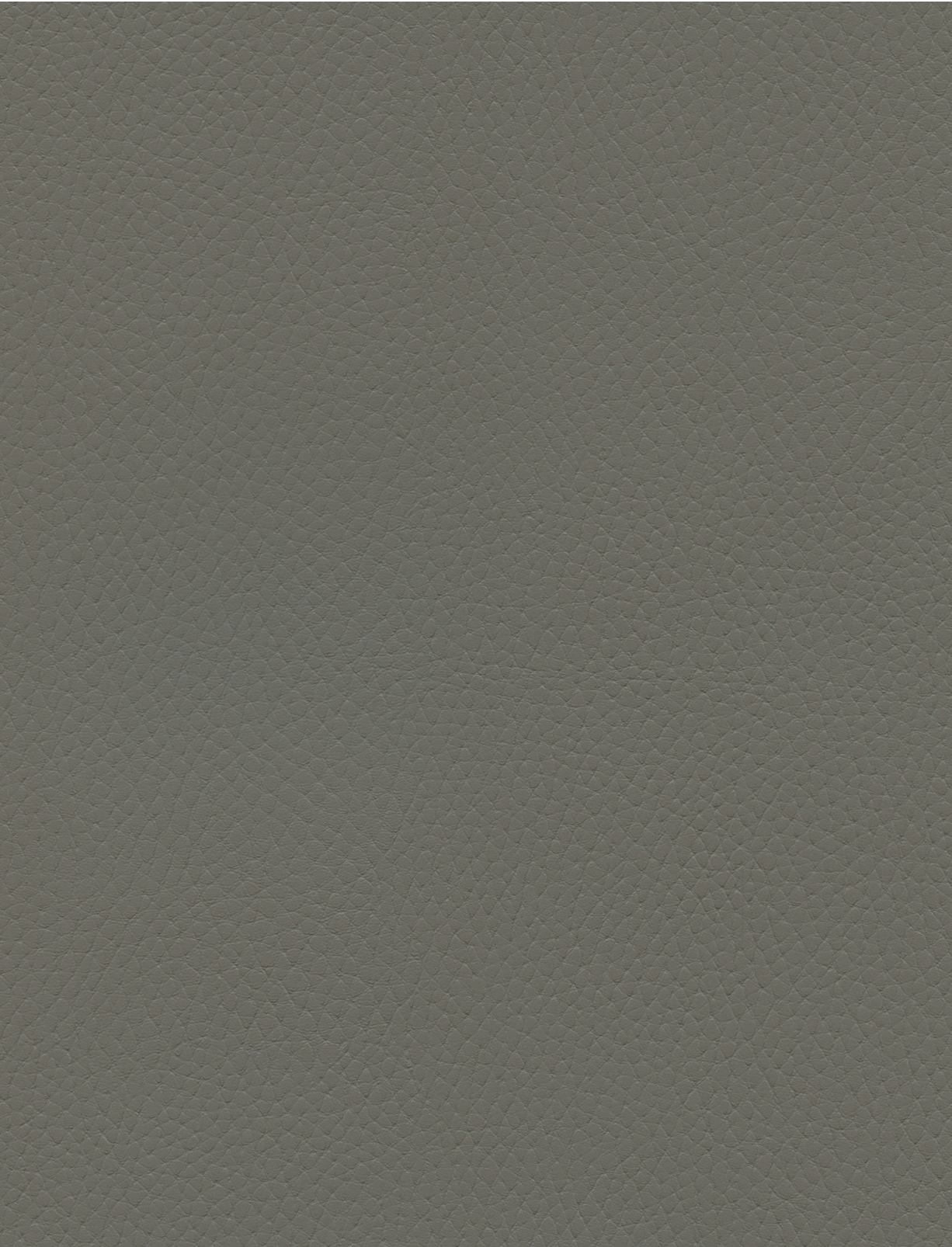




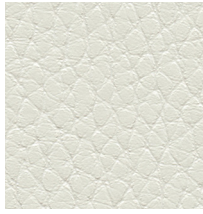
Ultraleather® | Tottori



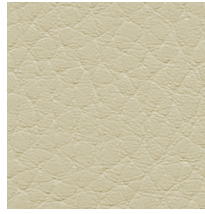
Ultraleather® | Tottori



601-5033 Sand Castle



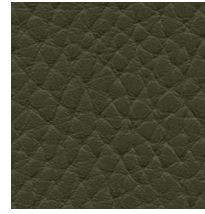
601-3418 Origami White



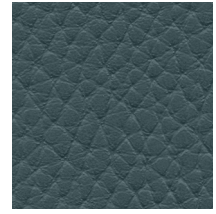
601-3120 Udon



601-5998 Rice Paper



601-4312 Lichen



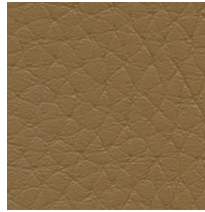
601-2622 Blue Mirage



601-5033 Sand Castle



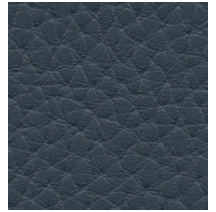
601-3280 Tatami Mat



601-3348 Ginseng



601-9362 Orchid



601-2595 Hot Spring



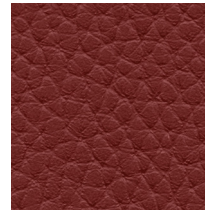
601-5037 Classic Grey



601-3386 Desert Dune



601-3300 Terrain



601-1404 Rouge



601-2515 Shibori Blue



601-5020 Black Sesame



601-3400 Soba



601-3297 Soy Sauce

Ultraleather® | Tottori

General Specifications

Composition:

100% Polycarbonate Polyurethane Surface
65% Polyester, 35% Rayon Backing

Weight:

Approx. 12.4 oz. Per Square Yard
Approx. 420 Grams Per Square Metre

Thickness:

Approx. 1.1 Millimetres

Width:

54 Inches / 137 Centimetres

Repeat:

None

Performance

Abrasion:

ASTM D4157 / 400,000 Double Rubs (Wyzenbeek)*
BS EN ISO 12947-2 / 200,000 Rubs (Martindale)*

*meets or exceeds

Hydrolysis:

14+ Weeks
ASTM D3690 Sect. 6.11 (Hydrolytic Stability)
ISO 1419 Method C (Accelerated Ageing)

Adhesion of Coating: ASTM D751

Tear Strength: ASTM D2261

Breaking Strength: ASTM D5034

Tensile Strength: BS EN ISO 1421

Colorfastness

Light Fastness: AATCC 16.3, 200 Hours, Grade 4
ISO 105 B02, Grade 6

Crocking: AATCC 8, Grade 4-5 Wet & Dry

Flammability Requirements

- ASTM E84 (Adhered) - Class A
- CA TB 117 - Pass
- FMVSS 302 & 95/28 Annex IV - Pass
- NFPA 260 - Class 1
- UFAC - Class 1

These fabrics, when treated and/or used with other compatible furniture components, have been shown to perform under the fire test conditions of:

- ASTM E84 (Unadhered)
- BS 5852 Source 0, 1 & 5 (Cig, Match & Crib 5)
- BS 5867 Part 2 Type B
- BS 7175
- FAR Specifications
- IMO Part 8
- NFPA 701

For more information on certifications and standards, sustainability, as well as cleaning and care instructions, please visit our website.

