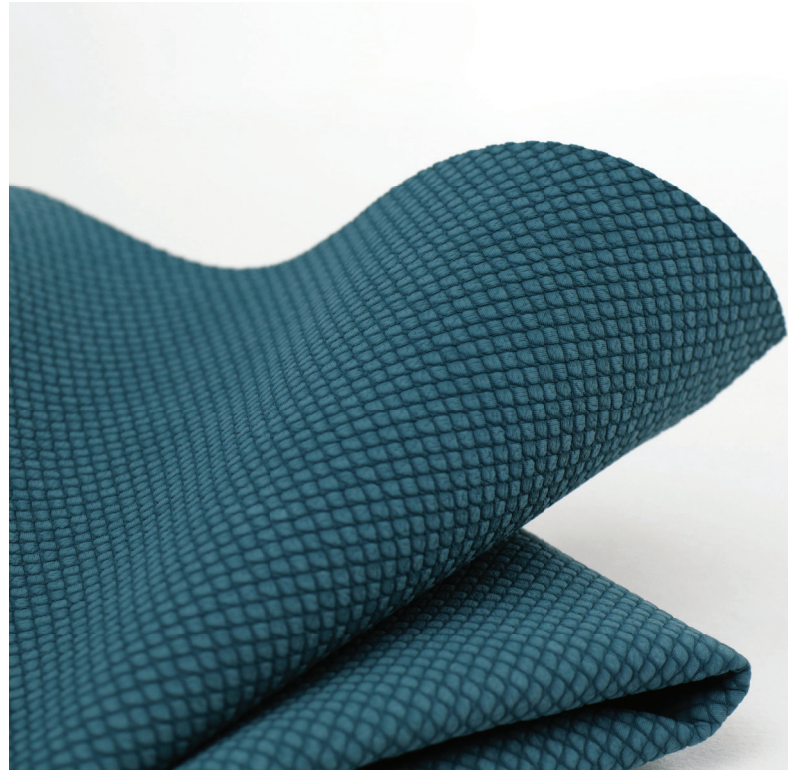


Dwell — Ultrafabrics

Dwell is a fine example of form, function and innovation combined to go beyond expectations. State-of-the-art texture and performance excite the senses, uniting to make a distinctive statement you must feel to believe. Surprisingly durable and easy to maintain, Dwell's debossed geometric pattern is available in a fresh, balanced palette, bringing sensorial enhancement to any setting.



-
- Superior durability – industry-leading 14+ weeks hydrolysis results
 - Reinforced rayon backing
 - 200,000 double rubs (Wyzenbeek), 200,000 rubs (Martindale)
 - Bleach cleanable (1:5 bleach/water solution)
 - SCS Indoor Advantage Gold Certification
 - Meets Health Care Without Harm's Healthy Interiors Criteria V2.3

An intelligent solution – the Ultrafabrics family of performance fabrics highlights boundary-pushing innovation where looks, feel and performance matter.



Dwell from Ultrafabrics

Application

Interior Upholstery

General Specifications

Composition:

100% Polycarbonate Polyurethane Surface

100% Reinforced Rayon Backing

Weight:

Approx. 10 oz. Per Square Yard

Approx. 340 Grams Per Square Metre

Thickness:

Approx. 1.0 Millimetres

Width:

54 Inches / 137 Centimetres

Repeat:

None

Performance

Abrasion:

ASTM D4157 / 200,000 Double Rubs (Wyzenbeek)*

BS EN ISO 12947-2 / 200,000 Rubs (Martindale)*

*meets or exceeds

Hydrolysis:

14+ Weeks

ASTM D3690 Sect. 6.11 (Hydrolytic Stability)

ISO 1419 Method C (Accelerated Ageing)

Adhesion of Coating: ASTM D751

Tear Strength: ASTM D2261

Breaking Strength: ASTM D5034

Tensile Strength: BS EN ISO 1421

Colorfastness

Light Fastness: AATCC 16.3, 200 Hours, Grade 4

ISO 105 B02, Grade 6

Crocking: AATCC 8, Grade 4-5 Wet & Dry

Flammability Requirements

- ASTM E84 (Adhered) - Class A
- CA TB 117 - Pass
- FMVSS 302 & 95/28 Annex IV - Pass
- NFPA 260 - Class 1
- UFAC - Class 1

These fabrics, when treated and/or used with other compatible furniture components, have been shown to perform under the fire test conditions of:

- ASTM E84 (Unadhered)
- BS 5852 Source 0, 1 & 5 (Cig, Match & Crib 5)
- IMO FTPC Part 8

For more information on certifications and standards, sustainability, as well as cleaning and care instructions, please visit our website.

