

2023 LARRY DENNIS COMPANY SAMPLES CATALOG



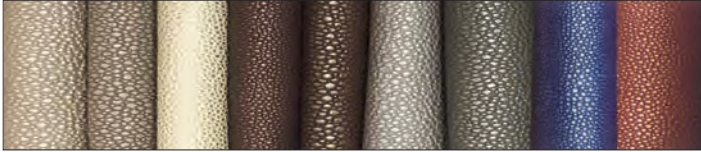
ULTRAFABRICS®



PLEASE NOTE: ALL SAMPLES IN THE CATALOG ARE SUBJECT TO CHANGE WITHOUT NOTICE

SHAGREEN

Sample #170509-2
\$3.00 sample card

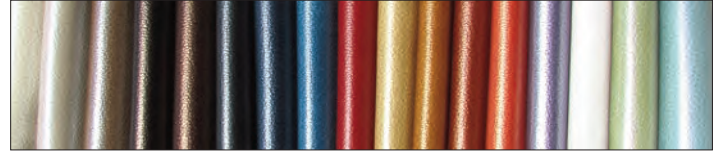


An Exotic Sting Ray Skin texture with the slightest touch of pearlescence. Phthalate-Free PVC. **13 Colors**

Flammability: MVSS 302 and CA. Technical Bulletin 117 Section E.
Applications: Hospitality, Contract/Office, Cruise Ships, Automotive/RV, Residential

CLARKE

Sample #170329-1
\$3.00 sample card

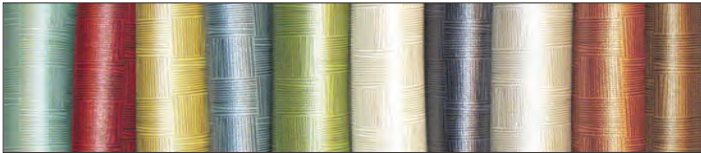


2-Toned Polyurethane with a Pebble Grain Leather Emboss and a Pearlized finish. Soft and supple hand. Engineered to perform in harsh environments. **21 Colors**

Flammability: MVSS 302 and CA. Technical Bulletin 117 Section E.
Applications: Healthcare, Hospitality, Contract/Office, Automotive/RV, Residential

PROMISE

Sample #151110-1
\$3.00 sample card



Durable with a soft structured print pattern and subtle pearlescent finish. **15 Colors**

Flammability: MVSS 302 and CA. Technical Bulletin 117 Section E.
Applications: Healthcare, Hospitality, Contract/Office, Education, Automotive/RV, Residential, Outdoor

TWIST

Sample #170823-1
\$3.00 sample card

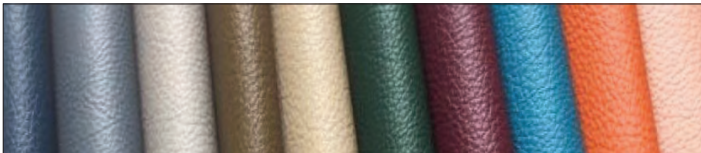


Unique emboss texture for a fabric-like hand with the Uncanny resemblance to a woven textile.

Flammability: MVSS 302 and CA. Technical Bulletin 117 Section E.
Applications: Healthcare, Hospitality, Contract/Office, Education, Automotive, Residential

CLASSIC

Sample #180926-1
\$3.00 sample card



CLASSIC is a recognized authentic leather grain look with a soft and supple hand. Classic sets a standard of excellence. **Over 49 Colors**

Flammability: FMVSS 302 and CA. Tech Bulletin 117 Section E., NFPA 260
Applications: Healthcare, Hospitality, Contract, Corporate, Automotive/RV, Restaurant, Outdoor, Marine Interiors, Residential

KIMONO

Sample #160520-1
\$3.00 sample card

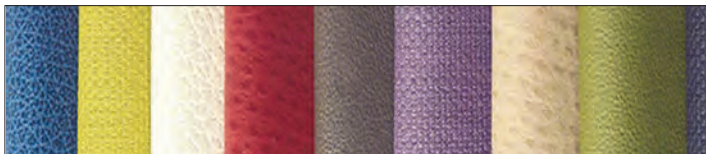


A luxurious material with true-to-life silk texturing. **24 Rich Colors** that highlight the vibrance and luster of silk. Designed with a subtle iridescence to enhance any design.

Applications: Healthcare, Hospitality, Contract/Office, Automotive/RV, Residential, Education

STUDIO

Sample #160418-1
\$3.00 sample card



STUDIO is a collection of 4 vinyl patterns . . . Canyon, (rich pebble grain leather), Phoenix (luxurious EMU skin), Persuasion (buttery soft kid leather), Vibe (contemporary textile look), **77 Colors!**

Applications: Healthcare, Hospitality, Contract, Corporate, Automotive/RV, Restaurant, Outdoor, Marine Interiors, Residential

STUDIO II

Discontinued
but have stock

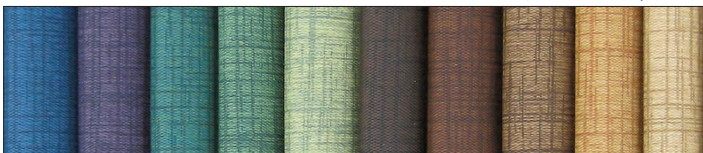


STUDIO II is a collection consisting of 3 vinyl patterns . . . Bottega, Scandia, Savanna **64 Colors**

Applications: Healthcare, Hospitality, Contract, Corporate Automotive/RV, Residential

MUSE

Sample #121012-1
\$3.00 sample card



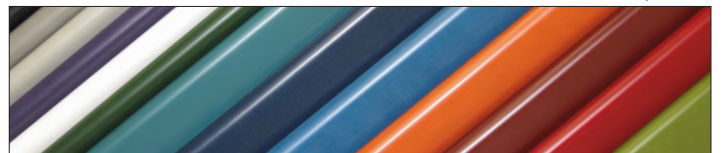
MUSE is a contemporary textile look with a two-color print that highlights its natural woven character in a color palette that will inspire you!

22 Lively Colors!

Applications: Healthcare, Hospitality, Contract/Office, Automotive/RV, Marine Interiors, Lounge Seating, Restaurant, Residential

SEDUCTION

Sample #121012-2
\$3.00 sample card



SEDUCTION, a luxurious polished leather with a subtle burnish. Smooth, supple surface touch. **25 elegant Colors** ranging from complex neutrals, to leathery browns, to sophisticated reds, blues and greens.

Applications: Healthcare, Hospitality, Contract/Office, Automotive/RV, Marine, Lounge Seating, Restaurants, Residential

Automotive Vinyls



PALMA

Solids, Hampton Perf & Mini-Perf

Sample #230621-1

ZEALAND is a stunning woven design with a rattan-like look and a metallic finish which is one of the hottest trends right now. The color names for the ZEALAND collection were inspired by the history and landmarks of New Zealand. From Gold Kiwi to Crater Lake, Sheep's Wool and Moeraki Boulder, the rich coloring of Zealand evokes the landscape of New Zealand. It exceeds 100,000 double rubs (Wyzenbeek), and can sustain extremes in temperatures. **10 COLORS.**

Flammability: MVSS 302 and CA. Technical Bulletin 117 Section 1.

Applications: Healthcare, Hospitality, Contract/Office, Automotive/RV, Restaurant, Lounge Seating, Residential

NU-OSTRICH

Exclusively at Larry Dennis

Sample #1536-1

combined sample ring

Nu-Ostrich faux leather simulates the look of real ostrich skin with a textured feel. This faux ostrich skin is ideal for Automotive & RV seating, chair covers, totes, headboards, crafting and other upholstery type applications.



BABY CROC

Exclusively at Larry Dennis

Other than the reptile itself, nothing looks more like a real crocodile than Baby Croc! With its reptile texture and its rich two-tone coloration, Baby Croc faux crocodile skin demands a double take. Baby Croc looks great when accented with real leather or microfiber.



VINTAGE (by Nassimi)

Experience the Distressed Leather appeal of VINTAGE!



FEATURES:

- Width: 54"
- Roll Size: 30 Yards
- Abrasion Resistance: 50,000 Double Rubs
- Colorfastness to Light: 300 hours
- Cold Crack: -20° F
- Sulfide Stain Resistant



Applications: Hospitality, Contract/Office, Automotive/RV, Residential

Sample #151014-3
\$3.00 sample card

SOFTSIDE Automotive Collection by Spradling

Quality Automotive Vinyls

Patterns: Apex, Aries, Buckskin, Caprice, Carbon Fiber, Corinthian, Gemini, G-Grain, Grand Prix, Heidi, Longitude, Madrid, Montana, Monticello, Nuance, Orion, Oxen, Pegasus, Polaris, Ruffino, Sierra, Soho, Verona, Wallaby



Sample #200107-1

fan deck

BOLTASOFT

by Omnova

Performance Upholstery for the Transportation Industry

Patterns: Car Bra, Carbon Fiber, Corinthian, Dynasty, Empire, G-Grain, Heritage, Heidi, Longitude, Luxury, Luxury Mini-Perf, Madrid, Montana, Monticello, NexusOver the Road Milled Pebble, Oxen, Rogue, Sierra, Sutton, Thunder Road, Verona, Wallaby



ENDURASOFT 2

by Enduralex

Soft Back to enhance workability

Patterns: Brushed Aluminum, Carbon Fiber, Corinthian, Doeskin, Eclipse, G-Grain, Hampton, Hampton Perf., Heidi, Honda, Madrid, Mercedes, Milled Pebble, Montana, Monticello, Nissan, Oxen, Sierra, Toyota, Wallaby

Sample #190403-1

\$7.00 stack book



(817) 222-9700

INDEPENDENCE III

by Enduratex

Sample #15330-1
Free sample card



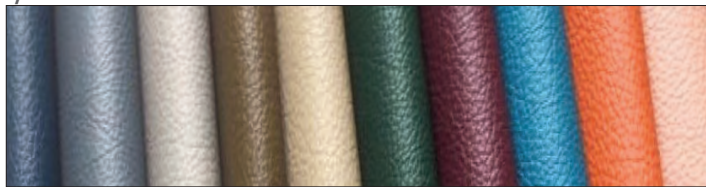
Durable, heavy duty synthetic leather composed of 100% polyvinyl chloride (PVC) with a knit backing. This durable fabric has anti-bacterial / anti-microbial resistance and is oil and sulfide resistant. It has mildew resistance in both front and back faces of the fabric.

Flammability: MVSS 302 and California Technical Bulletin 117 Section E.
Applications: Hospitality, Healthcare, Automotive, Industrial, Commercial

CLASSIC

by Nassimi

Sample #180926-1
\$3.00 sample card



CLASSIC is a recognized authentic leather grain look with a soft and supple hand. Classic sets a standard of excellence. **Over 49 Colors**

Flammability: FMVSS 302 and CA. Tech Bulletin 117 Section E., NFPA 260
Applications: Healthcare, Hospitality, Contract, Corporate, Automotive/RV, Restaurant, Outdoor, Marine Interiors, Residential



CARBON FIBER

Automotive Vinyl by Enduratex

Stretchable Quality as well as soft hand touch.

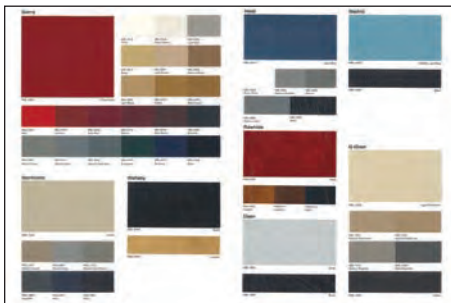
- 54" Wide - 30 yard roll
- Heavy Duty Wyzenbeek
- Anti-Microbial / Anti-Bacterial
- Mildew Resistant
- 500 Hours UV Resistance
- Cold crack -10° F

Applications: Marine, Automotive / RV, Residential, Contract interiors, Hospitality, Office, Restaurant, Hotel / Motel

Free Sample Card

MORBERN Automotive Collection

Sample #221121-1
\$3.00 sample card



Applications: Auto / RV markets, Marine

Specifications:

- Width: 54 inches (Heidi 61")
- Roll Size: 40 yards
- Vinyl; Backing: 100% Polyester
- Weight: 32 +/- 2 oz per linear yd.
- Thickness: 44 +/- 3 mils
- Abrasion resistance: 30,000 double rubs
- Cold Crack -25°
- 1000 Hours WeatherOmeter
- Mildew Resistant

Budget Automotive Vinyls

XTREME

by Futura



17 COLORS

BUDGET priced automotive vinyls

Sample #1523-1
\$3.00 fan deck

DENALI



BUDGET priced automotive vinyls

\$3.00 stack book

KRYPTEK

Automotive & Marine Vinyls by Morbern

Stretchable Quality as well as soft hand touch.

- 54" Wide - 30 yard roll
- Heavy Duty Wyzenbeek
- Anti-Microbial / Anti-Bacterial
- Mildew Resistant
- 500 Hours UV Resistance
- Cold crack -10° F

Applications: Marine, Automotive / RV, Residential, Contract interiors, Hospitality, Office, Restaurant, Hotel / Motel

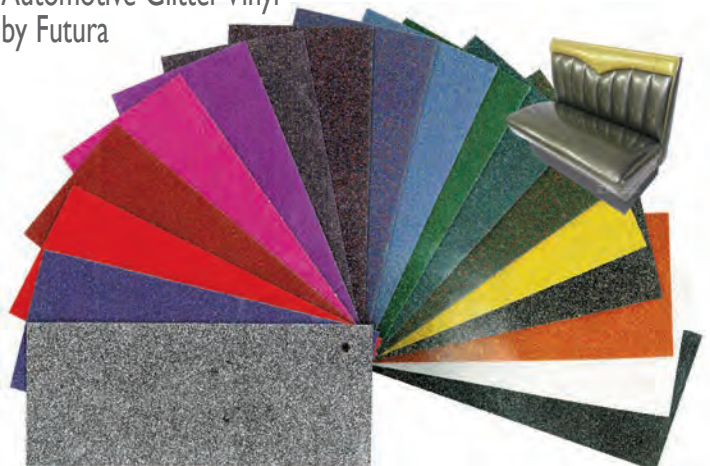


\$3.00 sample ring (4 colors)

POLARIS

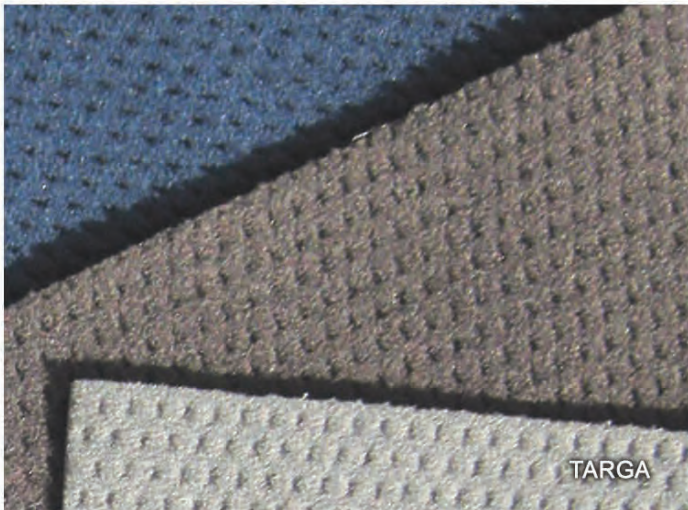
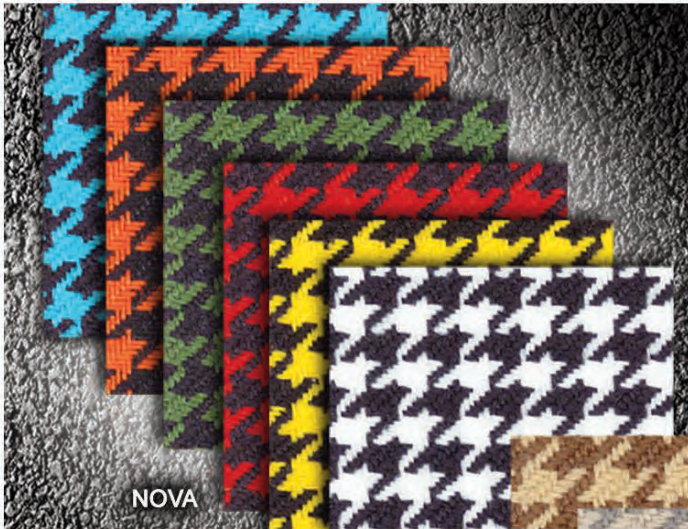
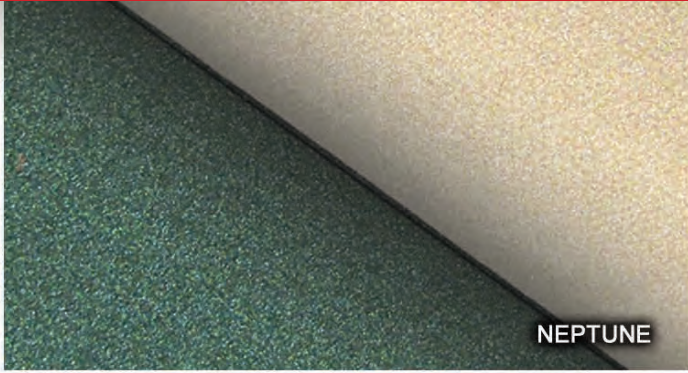
Automotive Glitter Vinyl by Futura

Free Sample Card

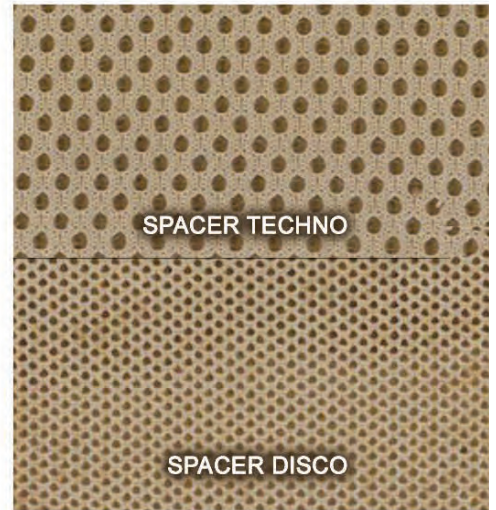
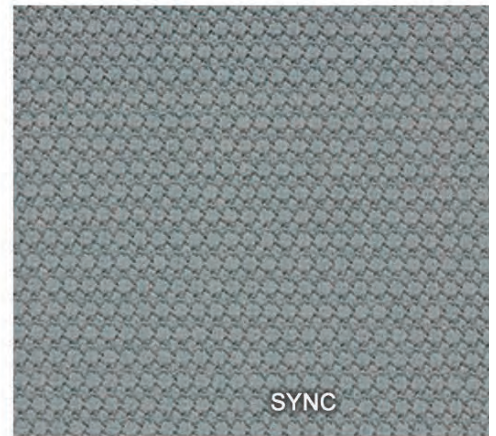


Contract Vinyl at an affordable price

Automotive Body Cloth Binder from LDC



LDC AUTOMOTIVE fabric selection binder



Automotive Body Cloth & Headliner



SUNNY SUEDE Automotive Faux Suede

Applications:

- Automotive / RV
- Office
- Residential
- Clothing
- Decor accenting

Sample #0067
FREE sample ring

SYNERGY SUEDE Automotive Faux Suede

2 Patterns:

- Contour (Not Backed)
- Performer (Backed)

12 Coordinating Colors

SPECIFICATIONS:

Roll Size50 yards
Content100% Polyester
Lightfastness300 Hours
Abrasion50,000 DR Wyzenbeek
FlammabilityMVSS 302
Colorfastness Croc . .Wet 3.5 minimum
Dry 4

Applications:

Automotive / RV, General Upholstery,
Contract Interiors

Sample #13613-1
FREE sample ring



INTERWEAVE Automotive Tweed

- 100 Olefin
- 54" wide
- 18 oz. per linear yard
- 175,000 Wyzenbeek
- MVSS 302
- Made in the U.S.A.
- 19 Colors

Sample #10-60
FREE sample card



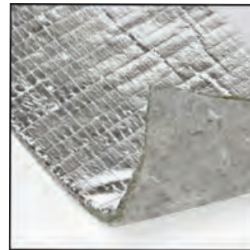
HEADLINER Automotive Headliner

FREE sample card



*Ask us about our
SURPLUS BODY CLOTH*

Automotive Insulation



Thermalizer™

FREE
sample swatch

**HIGH PERFORMANCE HEAT
AND SOUND INSULATOR**

- 5/16" Thick Felt Pad
- 48" Wide
- Reinforced Foil on one side
- Reflects 90% of radiant heat from your passenger & engine compartments
- Will not mold, mildew, or create odors
- Use under hood, floorboard, marine engine hatch, marine hull, door panels / fire walls.

Soundblok™
HIGH PERFORMANCE HEAT & SOUND INSULATOR

FREE
sample swatch



HIGH PERFORMANCE HEAT & SOUND INSULATOR

- 100% Synthetic carpet fiber for maximum stability
- Will not stretch, dog ear or feather

Sizes available:
27 oz. - 36" & 72" widths
40 oz. - 36" only width



RAYLON 80/20 Loop Pile Classic Retro Restoration Carpet

- 100% Raylon
- Latex Back
- 80" wide
- Made in the U.S.A.
- 12 Colors

Sample #09-10
FREE sample card



TITAN Street Rod Carpet with a Retro Loop Design

- 72" wide
- Scotchgard Treated
- 2 Colors

Sample #0073
FREE sample card

EL DORADO 800 Series Cut Pile Carpet

- 100% Nylon Cut Pile
- 80" wide
- Hardback or Softback
- Tighter Weave with less fuzzing
- OEM match colors
- Made in the U.S.A.
- 29 Colors

Sample #0077
FREE sample card



NEON 2900 Series Carpet

- 100% Polypropylene Cut Pile
- 76" wide
- High Luster
- 13.5 oz. per square yard
- Made in the U.S.A.
- 1 Color

Sample #09-35
FREE sample card



Sample #210127-1
FREE sample card

BENTLY Plush Wool Look Carpet without the cost!

- 100% Nylon Cut Pile
- 72" wide
- Soft tone
- Low Luster BCF Yarn
- Made in the U.S.A.
- 3 Colors

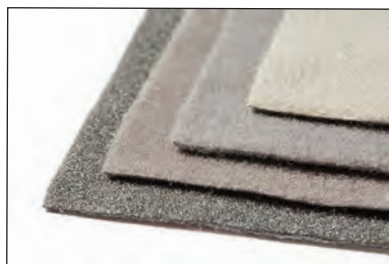


ESSEX 1000 Series Carpet

- 100% Nylon Cut Pile
- High Luster
- Dense BCF yarn
- 80" wide
- 22 oz. per square yard
- Made in the U.S.A.
- 4 Colors

FLEX FORM Dilour Pile (No Grin) Carpet

- Dilour Pile (No Grin)
- 40" & 80" Wide
- UV Resistant
- 12 oz. per square yard
- Made in the U.S.A.



Call for available stock

Sample #0093
FREE sample card

SUPERFLEX Automotive Needle-punch Carpet

- Dilour Pile (No Grin)
- 80" wide
- UV Resistant
- 18 oz. per square yard
- Heavyweight OEM Construction
- Made in the U.S.A.



Sample #11-14
FREE sample card

Hospitality, Healthcare & Contract Vinyls

CLARKE by Nassimi

Sample #170329-1
\$3.00 sample card



2-Toned Polyurethane with a Pebble Grain Leather Emboss and a Pearlized finish. Soft and supple hand. Engineered to perform in harsh environments. **21 Colors**

Flammability: MVSS 302 and CA. Technical Bulletin 117 Section E.
Applications: Healthcare, Hospitality, Contract/Office, Automotive/RV, Residential

TWIST by Nassimi

Sample #170823-1
\$3.00 sample card

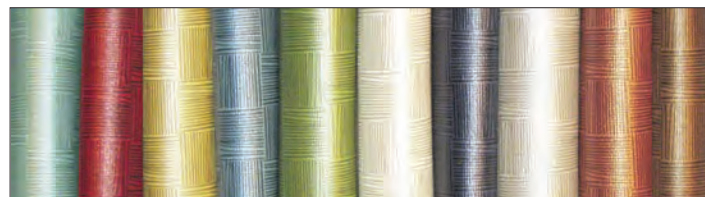


Unique emboss texture for a fabric-like hand with the uncanny resemblance to a woven textile.

Applications: Healthcare, Hospitality, Contract/Office, Education, Automotive, Residential

PROMISE by Nassimi

Sample #151110-1
\$3.00 sample card

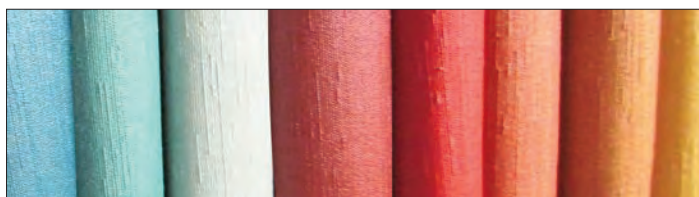


Durable with a soft structured print pattern and subtle pearlescent finish. **15 Colors**

Flammability: MVSS 302 and CA. Technical Bulletin 117 Section E.
Applications: Healthcare, Hospitality, Contract/Office, Education, Automotive/RV, Residential, Outdoor

KIMONO by Nassimi

Sample #160520-1
\$3.00 sample card

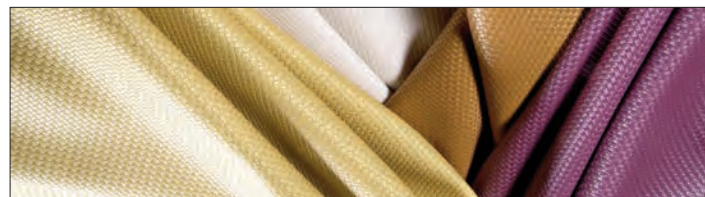


A luxurious material with true-to-life silk texturing. **24 Rich Colors** that highlight the vibrance and luster of silk. Designed with a subtle iridescence to enhance any design.

Applications: Healthcare, Hospitality, Contract/Office, Automotive/RV, Residential, Education

WOVEN HUES by Enduratex

Sample #170503-1
\$3.00 sample card



Woven Hues is a fashion forward collection with a beautiful, sophisticated woven-like texture and extensive color pallet that is sure to give any application a unique POP! 26 rich hued colors and features the Enduratex™ Qt polyester backing making it soft, supple and easy to fabricate. It is also enhanced by the ultimate award winning performance topcoat 'FORBID'.

Applications: Healthcare, Hospitality, Contract, Corporate, Lounge Seating, Automotive/RV, Restaurant, Residential

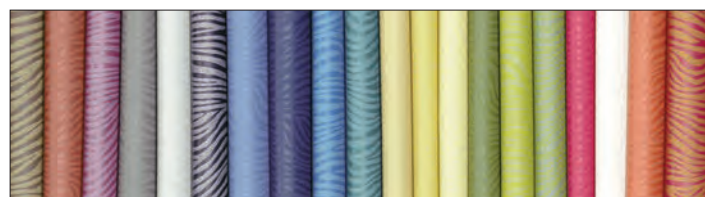
CRAFTED GRIDS by Enduratex

Sample #161214-1
\$3.00 sample card



Applications: Healthcare, Hospitality, Contract/Office, Education, Automotive/RV, Marine Interiors, Gaming, Restaurants, Residential Upholstery

SPINDLES by Enduratex



SPINDLES offers a modern design by incorporating a squiggly line print on a solid base in a warm and vibrant color line.

Applications: Healthcare, Hospitality, Contract/Office, Automotive/RV, Residential, Lounge

CLASSIC by Nassimi

Sample #180926-1
\$3.00 sample card



CLASSIC is a recognized authentic leather grain look with a soft and supple hand. Classic sets a standard of excellence. **Over 49 Colors**

Flammability: FMVSS 302 and CA. Tech Bulletin 117 Section E., NFPA 260
Applications: Healthcare, Hospitality, Contract, Corporate, Automotive/RV, Restaurant, Outdoor, Marine Interiors, Residential

Hospitality, Healthcare & Contract Vinyls



ZEALAND by Enduralex

Sample #190401-1
\$3.00 sample card

ZEALAND is a stunning woven design with a rattan-like look and a metallic finish which is one of the hottest trends right now. The color names for the ZEALAND collection were inspired by the history and landmarks of New Zealand. From Gold Kiwi to Crater Lake, Sheep's Wool and Moeraki Boulder, the rich coloring of Zealand evokes the landscape of New Zealand. It exceeds 100,000 double rubs (Wyzenbeek), and can sustain extremes in temperatures. **10 COLORS.**

Flammability: MVSS 302 and CA. Technical Bulletin 117 Section 1.

Applications: Healthcare, Hospitality, Contract/Office, Automotive/RV, Restaurant, Lounge Seating, Residential

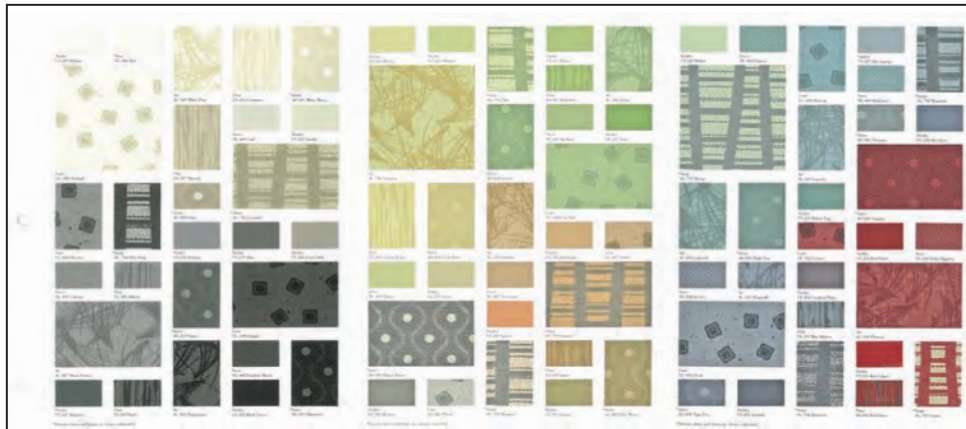
GENERATIONS Collection by Morbern

Sophisticated designs and unprecedented performance. MorCare™ 'Generations' upholstery vinyl - newly styled, performance-proven, made for hospitality and healthcare environments, or anywhere else performance and design matter.

Flammability: MVSS 302 and California 117 Section E, UFAC Class 1.

Applications: Healthcare, Hospitality, Industrial, Commercial, Automotive/RV, Marine Interior seating.

Sample #09-03
\$3.00 sample card

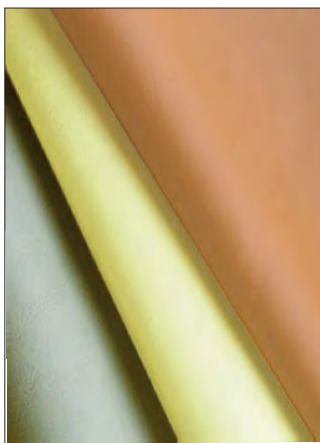


ALLANTE by Morbern

The look and feel of soft leather.
45 Solid colors to choose from.

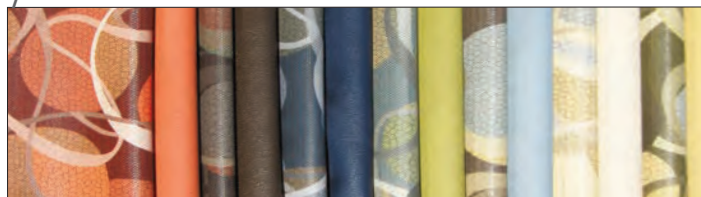
Applications: Hospitality, Healthcare, Conference Room, Executive Seating, Automotive/RV, Residential, Lounge Seating.

Sample #14620-5
\$3.00 sample card



CELEBRATION & VITALITY by Morbern

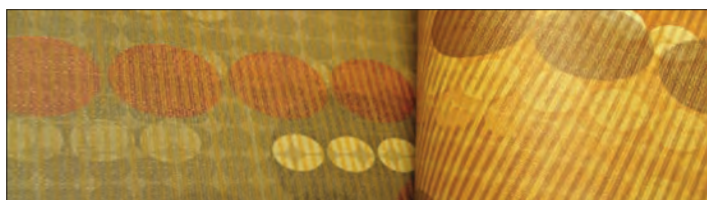
Sample #13131-1
\$3.00 sample card



CELEBRATION . . . A vinyl upholstery fabric that is sure to mark the occasion. Celebration features MorCare™ branded protection, which makes it resistant to most common stains, chemicals and bacteria. With superior cleanability and durability, Celebration performs beautifully in high use areas. With 7 vibrant colors to choose from, this festive digitally printed pattern is sure to liven up any environment. With 16 coordinating colors in our Vitality vinyl line.
Applications: Healthcare, Hospitality, Contract, Lounge Seating, Automotive/RV, Restaurant, Residential

INVISION by Spradling

Sample #11-15
\$3.00 sample card

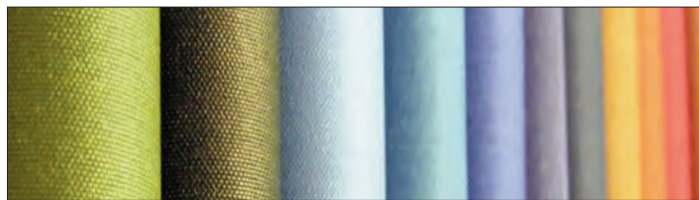


9 Colors Available

Applications: Hospitality, Healthcare, Automotive/RV, Corporate interior / Office, Residential, Sunroom, Restaurant, Casino, Contract

SILVERTEX by Spradling

Sample #160322-1
\$3.00 sample card



Available in 37 sophisticated colors. Coordinates well with INVISION.

Applications: Hospitality, Healthcare, Automotive/RV, Marine Interiors, Contract / Office, Corporate, Residential, Lounge Seating

Hospitality, Healthcare & Contract Vinyls

INDEPENDENCE III

by Enduralex

Sample #15330-1
Free sample card



Durable, heavy duty synthetic leather composed of 100% polyvinyl chloride (PVC) with a knit backing. This durable fabric has anti-bacterial / anti-microbial resistance and is oil and sulfide resistant. It has mildew resistance in both front and back faces of the fabric.

Flammability: MVSS 302 and California Technical Bulletin 117 Section E.
Applications: Hospitality, Healthcare, Automotive, Industrial, Commercial

VAQUERO

by Enduralex

Sample #170502-1
\$3.00 sample card



VAQUERO . . . A supple, faux leather with a soft suede-like feel. It's so spot on, you'll swear it's real leather! Inviting to sit on and easy to fabricate. The color line, as the name VAQUERO implies, evokes a western aesthetic. VAQUERO is as tough as a cowboy too; it exceeds 100,000 double rubs (Wyzenbeek), and can sustain extremes in temperatures.

Flammability: MVSS 302 and CA. Technical Bulletin 117 Section 1.
Applications: Healthcare, Hospitality, Contract/Office, Automotive/RV, Restaurant, Lounge Seating, Residential

WHISPER

by Spradling

Sample #170124-1
\$3.00 sample card



Applications: Automotive/RV, Conference Room, Executive Seating, Hospitality, Residential, Lounge Seating

SURREY

by Enduralex

Sample #180328-1
\$3.00 sample card

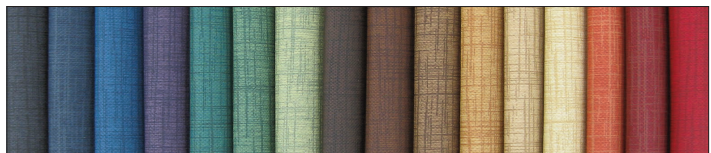


Surrey: A soft pearlescent vinyl with the look of real Shantung Silk. Available in **20 colors**. Meeting the growing demand for patterns and textile textures in areas where woven fabrics don't offer sufficient durability.
Applications: Healthcare, Hospitality, Contract/Office, Automotive/RV, Residential and Marine

MUSE

by Nassimi

Sample #121012-1
\$3.00 sample card



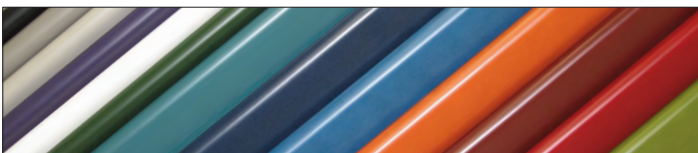
MUSE is a contemporary textile look with a two-color print that highlights its natural woven character in a color palette that will inspire you! **22 Lively Colors!**

Applications: Healthcare, Hospitality, Contract/Office, Automotive/RV, Marine Interiors, Lounge Seating, Restaurant, Residential

SEDUCTION

by Nassimi

Sample #121012-2
\$3.00 sample card



SEDUCTION, a luxurious polished leather with a subtle burnish. Smooth, supple surface touch. **25 elegant Colors**, ranging from complex neutrals, to leathery browns, to sophisticated reds, blues and greens.

Applications: Healthcare, Hospitality, Contract/Office, Automotive/RV, Marine, Lounge Seating, Restaurants, Residential

CARRARA

by Morbern

Carrara emulates the look and feel of soft leather with a distressed look. Heavy duty synthetic leather composed of 100% polyvinyl chloride (PVC) with a knit backing. This durable fabric has anti-bacterial / anti-microbial resistance and is oil and sulphate resistant. It has mildew resistance in both front and back faces of the fabric.

Flammability: MVSS 302 and CA. Technical Bulletin 117 Section E.

Applications: Hospitality, Contract/Office, Automotive/RV, Industrial, Commercial

Sample #180403-1
\$3.00 sample card



GRAN RESERVA

by Enduralex

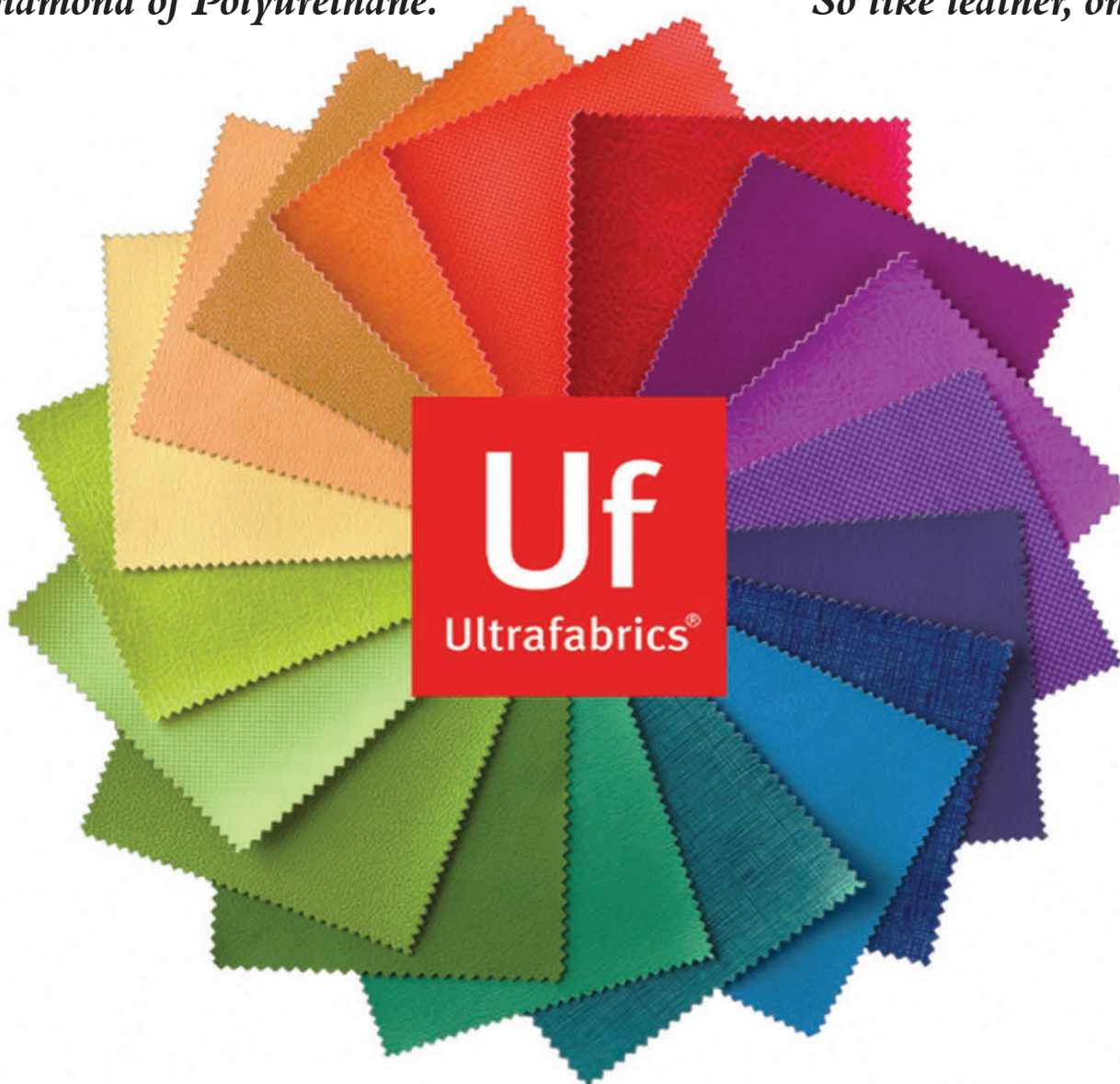
Applications: Hospitality, Healthcare, Restaurant, Office Interior, Automotive / RV, Marine Interior, Gaming, Commercial, Residential



ULTRAFABRICS®

The Diamond of Polyurethane.

So like leather, only better!



Patterns Available:

- Ultraleather®
- Ultraleather® Pro
- Pearlized
- Promessa
- Fresco
- Lino
- Brisa® Original
- Brisa® Distressed
- Brisa® Forecast
- Brisa® Frontier
- Summit
- Montage
- Tottori
- Coast
- Pumice
- Reef Pro
- Wired
- Echo-Tech
- Fusion
- Fusion Shimmer
- Volar
- Impasto

CALL FOR SAMPLE CARDS

General Upholstery Vinyl & Fabric

OL ROY Residential Upholstery Vinyl

Ol Roy is a beautiful hand-tooled leather look vinyl with a floral design. Ol Roy is a nice option in floral upholstery vinyl with a feel of the Old West.

• 54" Wide

Applications: Residential

Sample #151112-1

FREE sample ring



(sample ring also includes the pattern, Patchwork)

MANDOO Residential Upholstery Vinyl

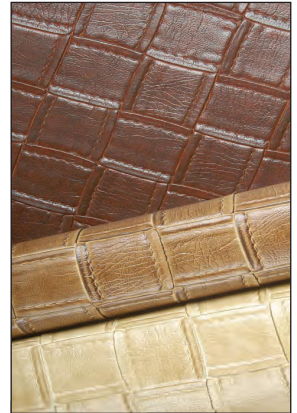
Mandoo's woven pattern isn't the stitched fabric you think it is. The quilted squares create highs and lows and makes for huge visual and textural appeal.

- 100% Polyvinyl Chloride (PVC) top
- 70% Polyester / 30% Cotton Backing
- 54" Wide
- Abrasion: 100,000 cycles Wyzenbeek
- UV Stability - 40 hours with no change in color.

Applications: Residential

Sample #170207-2

FREE sample swatch



NU-CROC Residential Upholstery Vinyl

The look of real crocodile skin with it's massive reptile texture and rich two-tone coloration. Nu-Croc is environmentally friendly. Nu-Croc also comes in two metallic colors to broaden it's appeal and application.

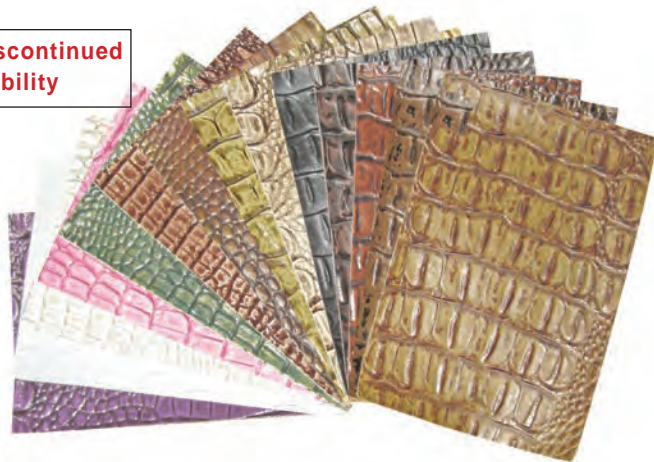
• 54" Wide

Applications: Residential

Sample #09-26

FREE sample ring

**Some colors are discontinued
Call for Availability**



COFFEE HOUSE Upholstery Tweed

Applications:
General Upholstery

49 Colors

SPECIFICATIONS:

Width54 Inches
Content100% Polyester
Latex Backing
Abrasion45,000 Martindale
cycles
FlammabilityUFAC Class 1
CA-117-2013
NFPA 260



SPECIAL ORDER FABRIC

Sample #14626-5

FREE stack book



PATCHWORK Residential Vinyl

A heavy faux leather with the look of pieced leather.

- Content: 100% Polyurethane Top
100% Polyester Backing

Applications: Residential

Sample #0051

FREE sample ring

General Upholstery Vinyl

NU-OSTRICH

Exclusively at Larry Dennis

Nu-Ostrich faux leather simulates the look of real ostrich skin with a textured feel. This faux ostrich skin is ideal for Automotive & RV seating, chair covers, totes, headboards, crafting and other upholstery type applications.

- Surface composition: PVC
- Backing: 65% Polyester, 35% Cotton
- 54" Wide. 30 yard rolls
- Abrasion: 35,000 cycles Wyzenbeek
- UV Stability: 40 Hours with no change in color



Sample #1536-1

combined sample ring

BABY CROC

Exclusively at Larry Dennis

Other than the reptile itself, nothing looks more like a real crocodile than Baby Croc!. With it's reptile texture and it's rich two-tone coloration, Baby Croc faux crocodile skin demands a double take. Baby Croc looks great when accented with real leather or microfiber.

- Surface composition: PVC
- Backing: 65% Polyester, 35% Cotton
- 54" Wide. 30 yard rolls
- Abrasion: 35,000 cycles Wyzenbeek
- UV Stability: 40 Hours with no change in color



NU-QUILL

Residential Upholstery Vinyl

This wildly popular faux ostrich leather pattern simulates the look of real ostrich skin. Nu-Quill is environmentally friendly and has a vast selection of fun and fabulous eye-catching colors to choose from.

- Surface composition: PVC
- Backing: 65% Polyester, 35% Cotton
- 54" Wide. 30 yard rolls
- Abrasion: 35,000 cycles Wyzenbeek
- UV Stability: 40 Hours with no change in color

Applications: Residential

Sample #0136

FREE sample ring

Quality Marine Vinyl



PERFORMANCE MARINE PRODUCTS

Capitano™



Lemon Drop
513660



Pennywise
517590



Daredevil
513952



Totally Tan
513937



Party Pink
517589



Marooned
517586



Sand Dollar
513903



Wild Orchid
517593



Root Beer
517592

Mandarin
517910



Cloud
513658



Beach White
519970



Conch Shell
514006



Heron
517585



Riviera
513659



Blue Chip
513846



Techno Gray
513887



Nuance
517587



Sandshell
514287



Rain
517591



Cancun Blue
517582



Eclipse
513900



Cityscape
518236



Cornerstone
517583



Daiquiri
517584



Parakeet
517588



Galapagos
514009



Cyberspace
513832

Applications:

- Marine Interior/Exterior

Features:

- 54" width - 40 yard roll
- Nominal Weight: 30 oz. per lin. yd.
- 100% vinyl face, polyester knit backing
- Cold Crack: -20°F
- UV resistant (CFFA-2) outdoor hours- 650
- Abrasion: Wyzenbeek 6,000 cycles Cotton duck abradant 50,000
- Mildew Resistance - ASTM-G-21

Flammability Requirements:

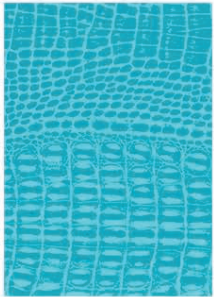
- BIFMA, Class A
- CA Tech Bulletin 117-2013, Sec. 1
- NFPA 260, Class 1
- UFAC Fabric, Class 1

Ask for
Sample #210713-1

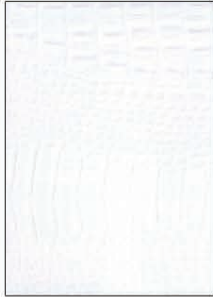
Quality Marine Vinyls

NEW

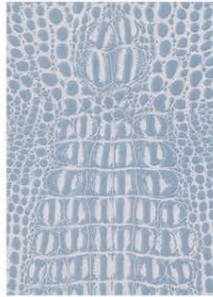
MARINE BIG CROC



TURQUOISE
MBC-106



WHITE
MBC-100



SILVER BLUE
MBC-107



CREAM
MBC-101



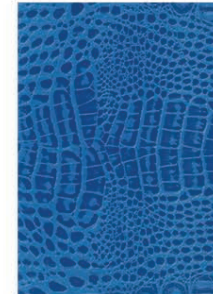
WOODEN BROWN
MBC-111



GREEN
MBC-108



CHOCOLATE
MBC-110



ROYAL BLUECAPE
MBC-200



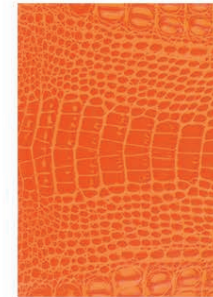
PINK
MBC-105



FUCHSIA
MBC-104



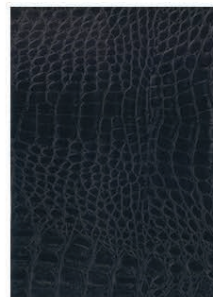
RED
MBC-103



ORANGE
MBC-102



CHARCOAL
MBC-109



BLACK
MBC-99

Features:

- 54" width - 30 yard roll
- Thickness: .95 mm
- Composition: 100% Vinyl
- Backing: 100% Polyester
- Cold Crack: -25°F
- UV Resistance:
650 hours minimum
- Abrasion Resistance:
100K Double Rubs

Flammability Requirements:

- California Tech Bulletin 117 Class 1
- UFAC, Class 1
- NFPA 260, Class 1



Morbern

Adrenaline

Collection

Rush



RU-205 Freestyle

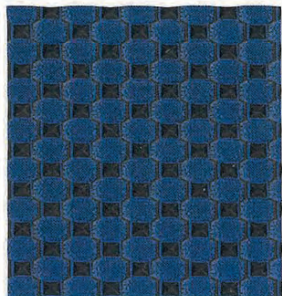


RU-204 Acid Sun RU-201 Tangerine RU-202 Solar Flare RU-209 White Cap RU-207 Bronze Mist RU-203 Topaz Mist



RU-211 Rocket RU-210 Pewter Mist RU-200 Vibrant Wake RU-208 Nickel RU-206 Liquid Silver RU-205 Freestyle

Wave



WV-205 Freestyle



WV-204 Acid Sun WV-201 Tangerine WV-202 Solar Flare WV-209 White Cap WV-207 Bronze Mist WV-203 Topaz Mist



WV-211 Rocket WV-208 Nickel WV-200 Vibrant Wake WV-206 Liquid Silver WV-210 Pewter Mist WV-205 Freestyle

Shock



SH-103 Horse Power



SH-102 Hot Rod SH-101 Lightning SH-100 Super Sonic SH-106 Carbon



SH-107 Jet SH-105 Storm SH-104 Thunder SH-103 Horse Power

Edge



EG-308 Navy



EG-309 Red EG-307 Orange EG-305 Yellow EG-301 Chalk EG-303 Beige



EG-312 Bronze EG-311 Titanium EG-302 Aqua EG-304 Blue EG-306 Gunmetal



EG-314 Black EG-313 Charcoal EG-310 Purple EG-308 Navy

High Quality Marine Vinyls

SOFTSIDE MARINE COLLECTION

Premium Marine Vinyl by Spradling



- Allegro
- Apex
- Aries
- Beluga
- Carbon Fiber
- Dolce
- Gemini
- Heidi Soft Marine
- Islander
- Marlin
- Navigator
- Orion
- Pegasus
- Polarix
- Reflex MQ
- Seabreeze
- Simtex
- Trexx Met MQ
- Zander

Sample #1542-1
fan deck

COUNTERPANE

Marine Vinyl by Enduralex

- 100% Virgin Vinyl
- 54" Wide - 30 Yard roll
- Cold crack -10° F
- UV Stabilized Pigment 500 hours
- Abrasion: 100,000 cycles Wyzenbeek
- Anti-Microbial / Anti-Bacterial
- Mildew resistant

Applications: Marine, Automotive / RV, Hospitality, Healthcare, Residential

Sample #15629-2
FREE sample card

JETSTREAM

Marine Vinyl by Enduralex

- 100% Virgin Vinyl
- 54" Wide - 30 Yard roll
- Cold crack -10° F
- UV Stabilized Pigment 500 hrs.
- Abrasion: Heavy Duty Wyzenbeek
- Anti-Microbial / Anti-Bacterial
- Mildew resistant

Applications: Marine, Automotive & RV, Hospitality, Healthcare, Office, Residential, Contract Interiors, Hospitality, Restaurant, Hotel / Motel

Sample #171017-1
FREE sample card



SHIP-2-SHORE

Premium Marine Vinyl Collection by Enduralex

11 PATTERNS INCLUDED: 183 colors!

- Armada
- Brushed Aluminum
- Carbon Fiber
- Counterpane
- Jetstream
- Lighthouse
- Lunar
- Marine Headliner
- Marine Underlining
- Tradewinds
- Windsong



Sample #14613-1
FREE sample board



SEAQUEST MARINE COLLECTION

Premium Marine Vinyl by Nassimi

Applications: Marine, Automotive & RV, Hospitality, Healthcare, Office, Residential, Contract Interiors, Hospitality, Restaurant, Hotel / Motel

Sample #221210-1
FREE sample card

- PVC (7P Phthalate Free)
- 54" Wide
- 54" width - 40 Yard roll (Roll-N-Pleat 10-20 yd rolls)
- Cold crack -10° F
- UV Resistance 1000 hrs.
- Lightfastness - 1000 hrs.
- Abrasion: 175,000 Double Rubs
- Mildew resistant
- Pink Stain resistant

TRADEWINDS

Marine Vinyl

WINDSONG 2

Marine Vinyl

Sample #160302-1
FREE sample card



- 100% Virgin Vinyl
- 54" Wide - 30 Yard roll
- Cold crack -10° F
- UV Stabilized Pigment 500 hours
- Abrasion: 100,000 cycles Wyzenbeek
- Anti-Microbial / Anti-Bacterial
- Mildew resistant

Applications: Marine, Automotive & RV, Hospitality, Healthcare, Residential

High Quality Marine Vinyls

CARBON FIBER

Premium Marine Vinyl by Enduratex

Stretchable Quality as well as soft hand touch.

- 54" Wide - 30 yard roll
- Heavy Duty Wyzenbeek
- Anti-Microbial / Anti-Bacterial
- Mildew Resistant
- 500 Hours UV Resistance
- Cold crack -10° F

Applications: Marine, Automotive / RV, Residential, Contract interiors, Hospitality, Office, Restaurant, Hotel / Motel

Sample #14626-3
FREE sample card



ALLSPORT

Marine Vinyl by MORBERN

- 360° 4 way stretch vinyl
- Cold crack -60° F
- Superior tailorability
- 1000 Hours Weather Resistance
- Abrasion Resistance 30,000 DR
- FMVASS 302

Applications: Marine, Jet Ski's, Automotive, Extreme Weather applications, All Terrain Vehicles, Golf Carts

Sample #0140
FREE sample card



SYMPHONY STUDIO Collection

Premium Marine Vinyl by Nassimi

A Faux Leather with a soft & supple leather-like hand with the performance of vinyl.

- 54" Wide - 30 yard roll
- 250,000 DR Wyzenbeek
- Anti-Microbial / Anti-Bacterial & Mildew Resistant
- 650 Hours UV Resistance AATCC Method
- Cold crack -20° F
- Stain Resistance with RESILIENCE
- Sulfide Stain Resistant

Applications: Marine, Automotive / RV, Residential, Contract interiors, Healthcare, Hospitality, Office, Restaurant, Hotel / Motel.

Sample #160413-1
FREE sample card



ARMADA

Marine Vinyl by Enduratex

- 54" Wide - 40 Yard roll
- 100% Virgin Vinyl
- QUV-B minimum 500 hours
- Heavy Duty Wyzenbeek
- Anti-Microbial / Anti-Bacterial
- Mildew treated front & back
- 1500 Hours Weatherometer
- Cold crack -10° F

Applications: Marine, Automotive / RV, Healthcare

Sample #14626-2
FREE sample card



LIGHTHOUSE

Budget Priced Marine Vinyl by Enduratex

- 54" Wide - 40 yard roll
- 500,000 DR Wyzenbeek
- Mildew & Anti-Microbial treated
- 500 Hours UV Resistance
- 1500 Hours Weatherometer
- Cold crack -10° F

Applications: Marine

Sample #09-43
FREE sample card



LUNAR

Marine Vinyl by Enduratex

Sample #14626-1
FREE sample card



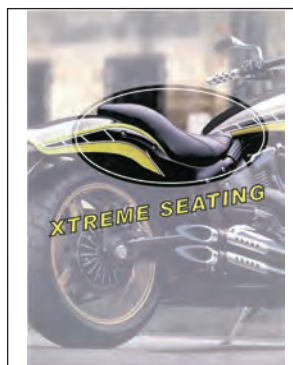
- 54" Wide - 30 Yard roll
- Heavy Duty Wyzenbeek
- Anti-Microbial / Anti-Bacterial
- Mildew resistant
- 500 Hours UV Resistance
- Cold crack -10° F

Applications: Marine, Automotive / RV, Residential, Contract Interiors, Hospitality, Office, Restaurant, Hotel / Motel

XTREME SEATING 4 way stretch by Enduratex

- All patterns are black in color
- Multiple Textures
- 54" wide
- Oil & Sulfide Resistant
- UV Resistant ASTM G53
- Cold crack - **Rapper** -10°F
- Cold crack - **Rapper Extreme** -40°F
- Cold crack - **Slip Stop** -30°F

Applications: Motorcycle, ATV, Jetski, Bicycle, Marine, Automotive



Sample #10-63
FREE sample card

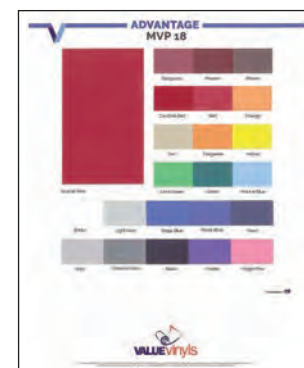
ADVANTAGE MVP 18

PVC Coated Polyester

- Up to 126" Wide - 75 yd. put up
- Mildew treated
- UV treated
- Cold crack -30° F

Applications: Marine, Automotive / RV, Exercise Mats, Punching Bags, Truck Tarp, Inflatables

Sample #0011
FREE sample card





SYMPHONY CLASSIC Premium Auto & Marine Vinyl by Nassimi

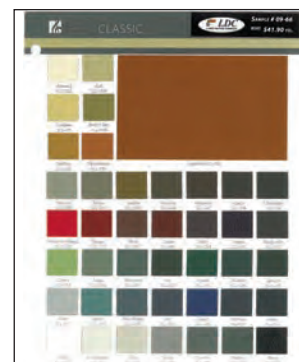
Classic boasts a soft and supple hand, coupled with extreme durability and performance, maintaining its status as the premier faux leather in the market.

A Faux Leather with a soft & supple leather-like hand with the performance of vinyl.

- 54" Wide - 30 yard roll
- 500,000 DR Wyzenbeek
- Anti-Microbial / Anti-Bacterial
- Mildew Resistant
- 500 Hours UV Resistance
- Cold crack -20° F
- Stain Resistance with RESILIENCE

Applications: Marine, Automotive / RV, Residential, Contract interiors, Healthcare, Hospitality, Office, Restaurant, Hotel / Motel

FREE Sample Card



High Quality Marine Carpets & Noise Barrier

MYSTIC Marine Carpet

- 100% Polypropylene Pile
- Water, Gas & Oil Resistant Backing
- Unique Cut-N-Loop construction
- Plush with style
- 8' Wide
- Made in the U.S.A.
- 5 Colors

Sample #10-22
FREE sample card



CLASSIC Marine Carpet

- 100% Polypropylene Pile
- Water, Gas & Oil Resistant Backing
- Unique Cut-N-Loop construction
- UV Resistant
- Resistant to Mold, Mildew & Staining
- Cleans Easily
- 6' Wide
- Made in the U.S.A.
- 4 Colors

Sample #10-21
FREE sample card



AQUA TURF Marine Carpet

- 100% Olefin Pile
- 96" & 102" Widths on select colors
- Water, Gas & Oil Resistant Backing
- Unique Cut-N-Loop construction
- UV Light Stabilized
- No Fuzzing or Pilling
- Mildew & Moisture Resistant
- Low Water Retention
- Made in the U.S.A.
- 12 Colors

Sample #09-36
FREE sample card



OUTDOOR MARINE BERBER CARPET

- High performance outdoor carpet with a beautiful berber texture
- 72" Wide
- UV & Water Resistant
- Dries quickly when wet
- 'AQUA GRIP' backing
- Made in the U.S.A.
- 2 Colors

Sample #09-12
FREE sample card

BAY SHORE Marine Carpet

- 100% Olefin Pile
- 6' Wide
- Water, Gas & Oil Resistant Backing
- UV Light Stabilized
- No Fuzzing or Pilling
- Mildew & Moisture Resistant
- Color Coordinated to Marine Vinyls
- Low Water Retention
- Made in the U.S.A.
- 12 Colors

Sample #10-17
FREE sample card



SNAP BACK For use with marine carpet

6' Wide

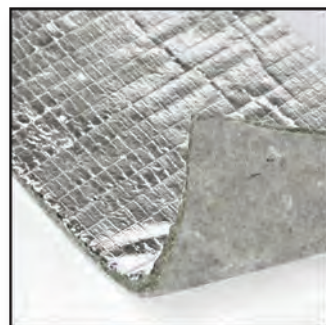
When your marine carpet is glued on to 'Snap Back', it enables you to 'SNAP' down your carpet and keep it from moving around.

Sample #160401-1
FREE sample card



Marine Insulation & Sound Barrier

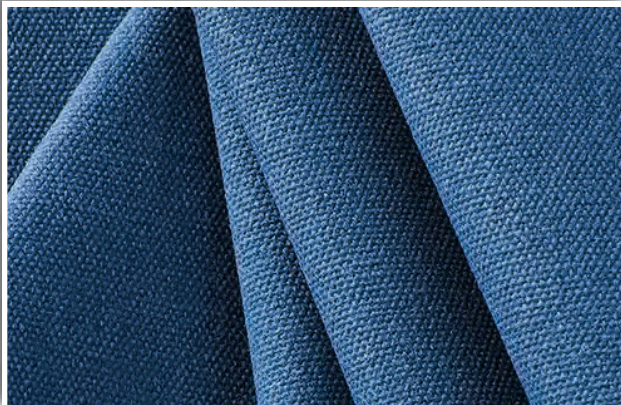
Thermalizer™



FREE
sample swatch

- 5/16" Thick Felt Pad
- 48" Wide
- Reinforced Foil on one side
- Reflects 90% of radiant heat from your passenger & engine compartments
- Will not mold, mildew or create odors
- Use under marine hull, marine engine hatch, under automobile hood, floor board, door panels / firewalls.

Marine Canvas



Docril® Solution Dyed Acrylic by Docril® Fabrics



- 100% Solution Dyed Acrylic
- 60" Wide
- High Water Repellence
- Blocks up to 90% UV of Rays
- High Durability & Abrasion Resistance
- Mold & Mildew Resistant

Call for Sample

TOP NOTCH Solution Dyed Polyester by Marlen Textiles



Matching 1" Bias Binding All colors IN STOCK

- 100% Solution Dyed Polyester
- 840 Denier-11.5 oz per sq. yd.
- 60" Wide
- Mold & Mildew Resistant
- Excellent Water & Stain Resistance

Call for Sample

ODYSSEY Acrylic Coated Polyester by Marlen Textiles



- 100% Acrylic Coated Polyester
- 300 Denier - 6.5 oz per sq. yd.
- 64" Wide
- Mold & Mildew Resistant
- Excellent Water & Stain Resistance

Call for Sample

TOP GUN Acrylic Coated Polyester by Marlen Textiles



- 100% Acrylic Coated Polyester
- 600 Denier - 11.5 oz per sq. yd.
- 62" Wide
- Mold & Mildew Resistant
- Excellent Water & Stain Resistance

Call for Sample

SUNGUARD UVR BONDED POLYESTER THREAD

**Recommended
for Outdoor Use**

**Sample #160202-1
FREE** sample card

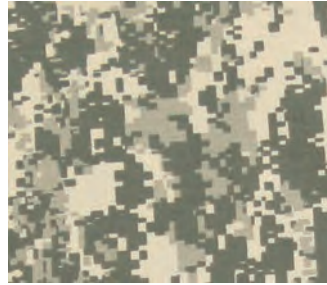


**2 Thread Sizes Available
92 & 138**

- Ultraviolet Resistant
- Mildew Resistant
- Colorfast Dyes
- Over 30 colors available
- Marine Acrylic and Auto OEM vinyl color matches available



SECLUSION
Tapestry (Fabric)



DIGITAL CAMO - GREEN
#215103 (Fabric)



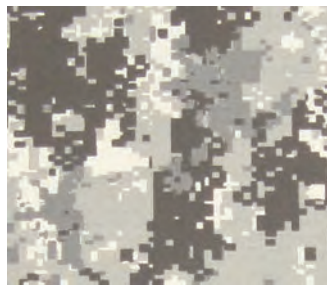
WOODLAND CAMO - TAN
#215102 (Fabric)



DIGITAL CAMO - BEIGE
#215104 (Fabric)



WOODLAND CAMO - OLIVE
#215101 (fabric)



DIGITAL CAMO - CHARCOAL
#215105 (Fabric)



HIDDEN CREEK - MARSH
Expanded Vinyl



HIDDEN CREEK - AUTUMN
Expanded Vinyl

Fabrics & Vinyls

USES:

(Depending on Fabric)

- Deer Stands
- Deer Blinds
- Upholstery
- Clothing
- Canopy
- Baggage
- Wall Covering
- Marine Applications:
 - Hidden Creek - Marsh
 - Hidden Creek - Autumn

Thread & Catalogs



HIGH SPEC Bonded Nylon Thread

- QS-9000: Q-1 Rated
- Meets all specifications for automotive, Furniture and transportation
- Bonded & Lubed
- Left Twist
- Colorfast
- Automotive OEM vinyl color matches available
- Over 30 colors available

Sample #151013-1
FREE sample card

QTC CONTRAST Bold Bonded Nylon Thread

Perfect for decorative seat trimming, accent stitching and much more! This thread will create a bold effect in any seam that is **GUARANTEED TO GET NOTICED!**



Recommended Needle Size: 24 - 26
Recommended 138 Bobbin Size



Sample #151013-2
FREE sample card

- LARGE Size T-270 (8 oz. spools)
- Applications: Automotive & Furniture (not recommended for outdoor use)
- 18 impactful colors to choose from

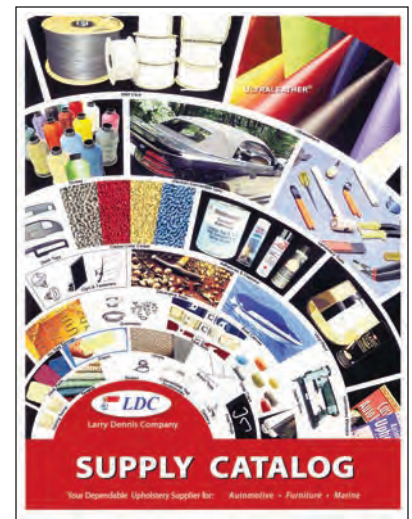
CATALOGS AVAILABLE



Marine Catalog

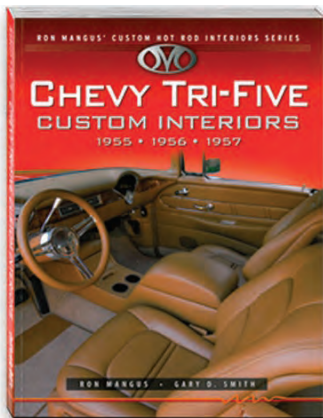


Street Rod Catalog



Upholstery Supply Catalog

AUTOMOTIVE UPHOLSTERY HANDBOOKS

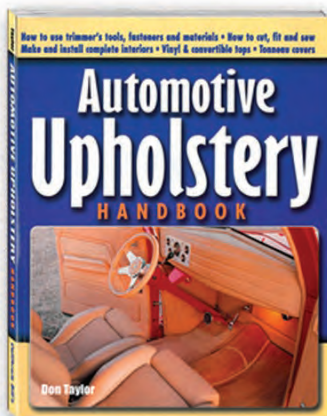


Chevy Tri-Five Custom Interiors

by Ron Mangus & Gary D. Smith

Chevy Tri-Five Custom Interiors will inspire you with 18 examples of award-winning interiors by Ron Mangus. Get a detailed look at creative interior design solutions for seats, door, kick, and rear quarter panels, carpet, mats, headliner, trunk, seat bolsters, etc.

8 1/2" x 11", 160 full color pages.

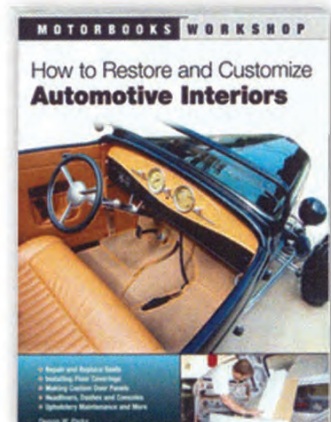


Automotive Upholstery Handbook

by Don Taylor

Learn to sew vinyl, leather and fabrics as well as restore, recover and build bench and bucket seats for any car, truck, van, RV, boat or airplane.

8 1/2" x 11", 230 pages
550 b&w photos.



How to Restore and Customize Automotive Interiors

by Dennis W. Parks

Step-by-step how-to sequences show exactly how to upholster seats, install a headliner, and much more.

8 1/2" x 11", 159 pages, illustrations.



Follow us on Instagram!
Larrydenniscompany

LARRY DENNIS COMPANY
6121 Midway Rd.
Fort Worth, TX 76117



800-772-7542
e-mail: LDCTX@ATT.NET
www.larrydennis.com